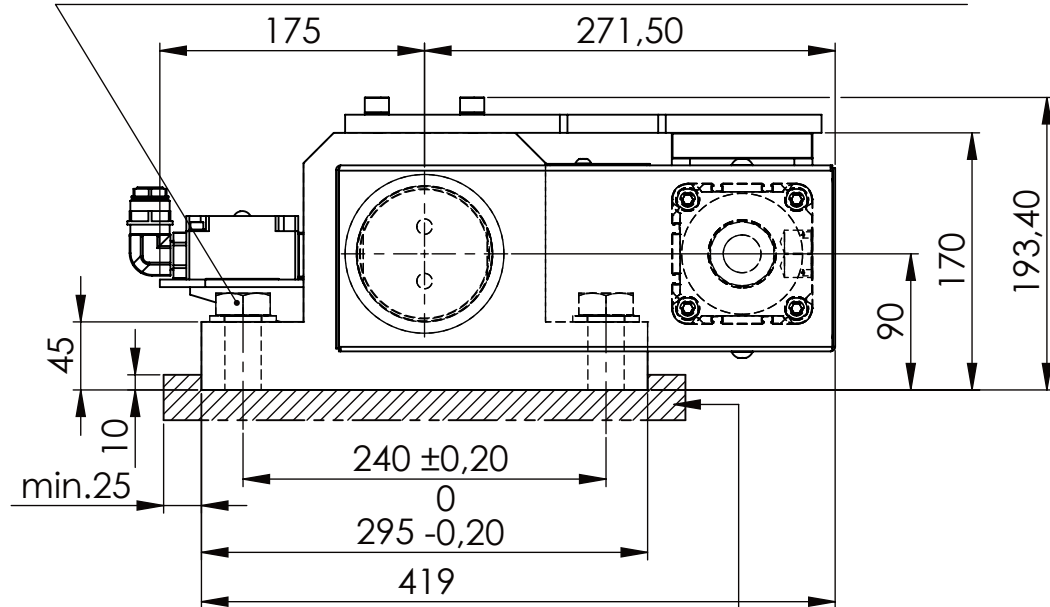


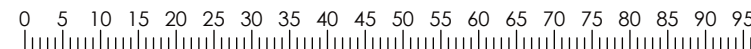
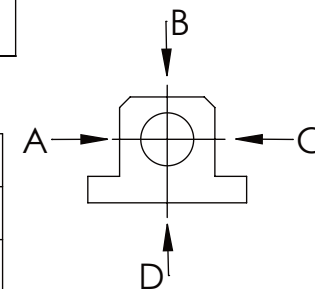
Hexagon Screw DIN 931/DIN EN ISO 4014-M24x90- 8.8, $M_a=760Nm$, Washer DIN 125/DIN EN ISO 7089 -A25, retain with Loctite or similar



please observe the fivefold security during welding of the Retaining plate



A	B	C	D
F all.	130.000 N	30.000 N	
under static load			



TYPE OF DOKUMENT: DATA SHEET

WEIGHT [KG]: 70.95 PROJECTION:

SAFETY NOTE
DIN ISO 16016:2007-12
Buhl Maschinenbau e.K.
Carl-Zeiss-Str. 2
71065 Sindelfingen

	Date	Name
DRAW.	13.08.15	G.Velleuer
APP.	13.08.15	W.Buhl

DESIGNATION	SHEET-FORMAT
SAFETY LOCKING	DINA4
ADDITIONAL DESIGNATION	SCALE
SA 90P	1:5
DRAWING-NO.:	REV.
15-SA 90 P 04-05	0

GENERAL TOLERANCE DIN ISO 2768 m-K							
FROM	6	30	120	400	1000	2000	
TO	6	30	120	400	1000	2000	4000
TOL.±	0.1	0.2	0.3	0.5	0.8	1.2	2.0

Buhl Maschinenbau e.K.
Sindelfingen

BUHL