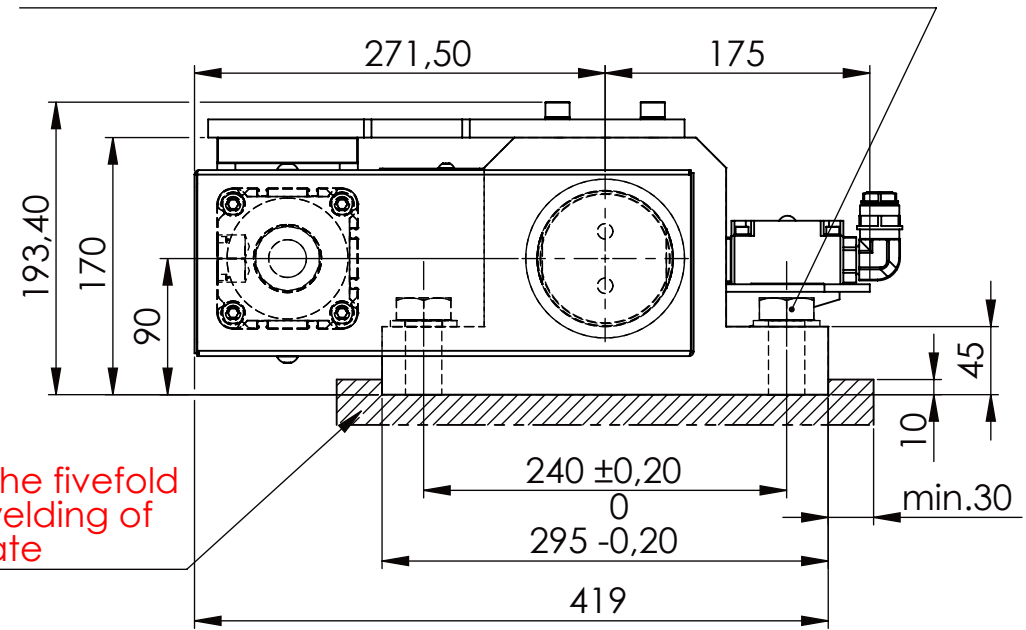
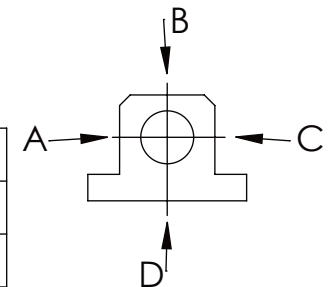


please observe the fivefold  
security during welding of  
the Retaining plate

Hexagon Screw DIN 931/DIN EN ISO 4014-M24x90- 8.8,  
Ma=760Nm, Washer DIN 125/DIN EN ISO 7089 -A25,  
retain with Loctite or similar



	A B C	D
F all.	130.000 N	30.000 N
under static load		



TYPE OF DOKUMENT: DATA SHEET

SAFETY NOTE  
DIN ISO 16016:2007-12

Buhl Maschinenbau e.K.  
Carl-Zeiss-Str. 2  
71065 Sindelfingen

GENERAL TOLERANCE  
DIN ISO 2768 m-K

FROM	6	30	120	400	1000	2000
TO	6	30	120	400	1000	2000
TOL.±	0.1	0.2	0.3	0.5	0.8	1.2

	Date	Name
DRAW.	18.03.15	G.Velleuer
APP.	19.03.15	W.Buhl



WEIGHT [KG]: 70.95 PROJECTION

DESIGNATION	SHEET-FORMAT
SAFETY LOCKING	DINA4
ADDITIONAL DESIGNATION	SCALE
SA 90P	1:5
DRAWING-NO.:	REV.
15-SA 90 P 03-03	0