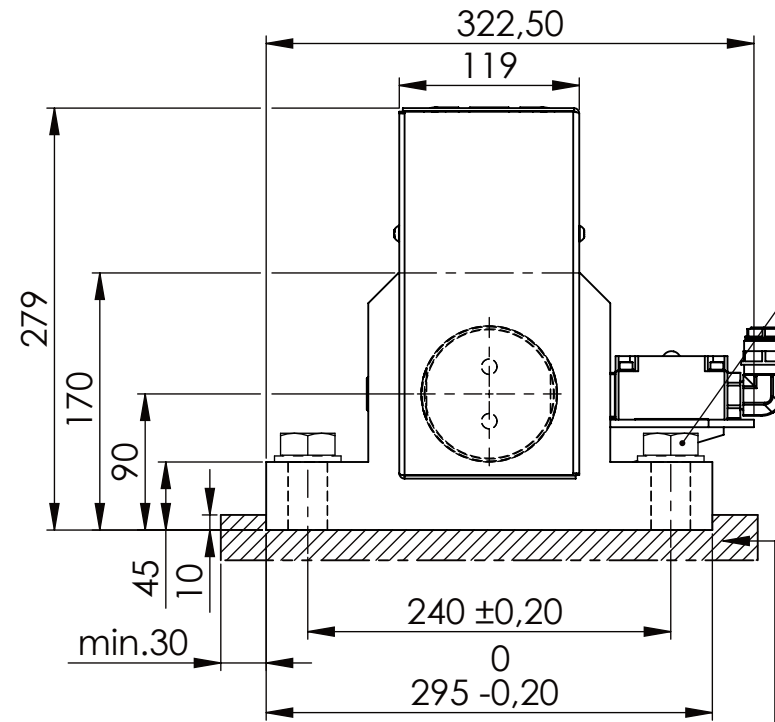
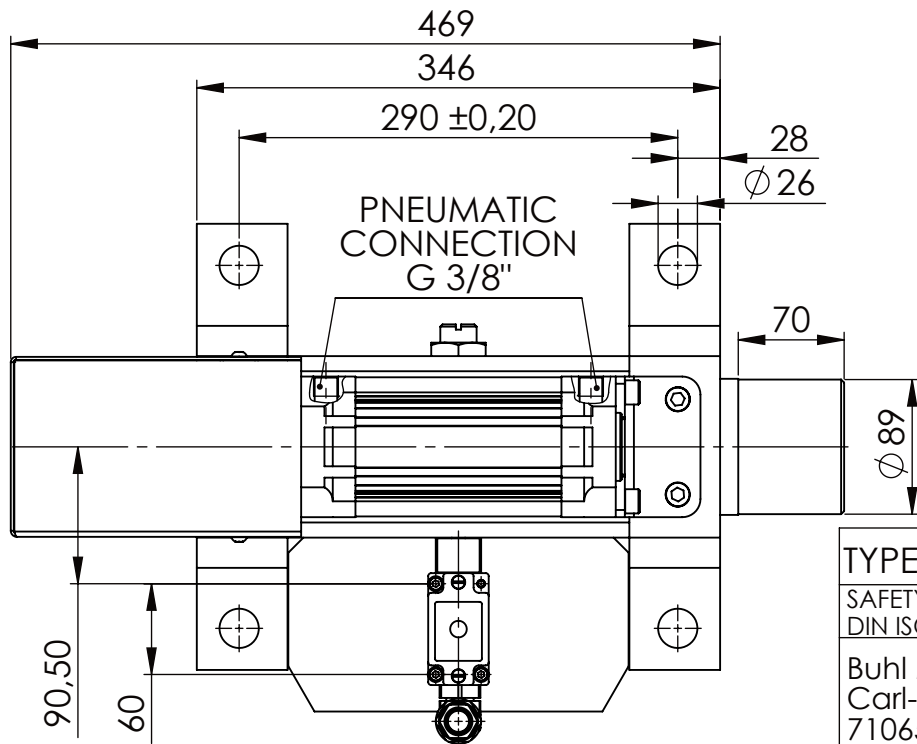
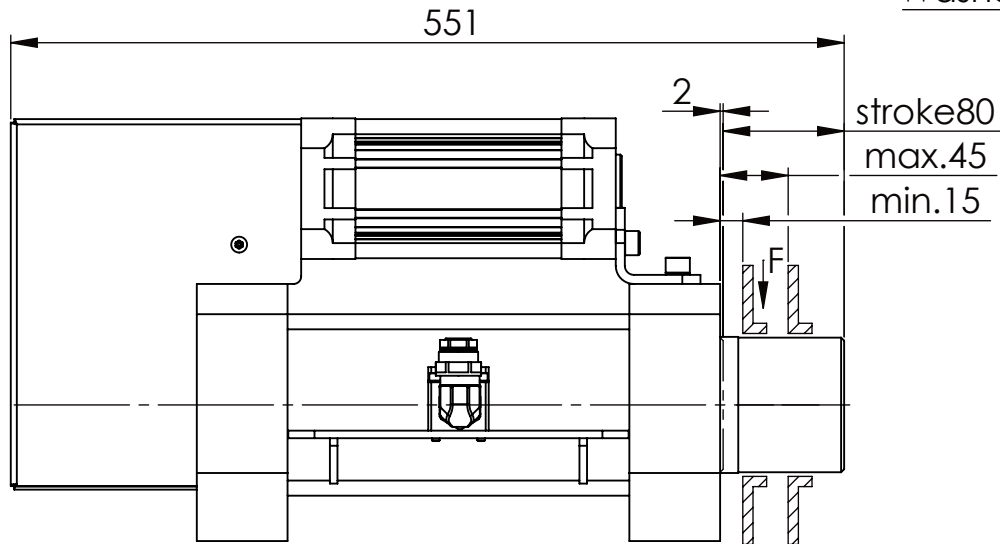


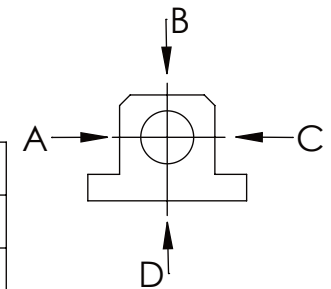
Hexagon Screw DIN 931/DIN EN ISO 4014-M24x90- 8.8, Ma=760Nm,
Washer DIN 125/DIN EN ISO 7089 -A25, retain with Loctite or similar



please observe the fivefold
security during welding of
the Retaining plate



| | A | B | C | D |
|-------------------|-----------|----------|---|---|
| F all. | 130.000 N | 30.000 N | | |
| under static load | | | | |



TYPE OF DOKUMENT: DATA SHEET

SAFETY NOTE
DIN ISO 16016:2007-12

Buhl Maschinenbau e.K.
Carl-Zeiss-Str. 2
71065 Sindelfingen

GENERAL TOLERANCE
DIN ISO 2768 m-K

| FROM | 6 | 30 | 120 | 400 | 1000 | 2000 |
|-------|-----|-----|-----|-----|------|------|
| TO | 6 | 30 | 120 | 400 | 1000 | 2000 |
| TOL.± | 0.1 | 0.2 | 0.3 | 0.5 | 0.8 | 1.2 |

Buhl Maschinenbau e.K.
Sindelfingen

BUHL

WEIGHT [KG]: 61.09

PROJECTION

DESIGNATION

SAFETY LOCKING

ADDITIONAL DESIGNATION

SA 90P

DRAWING-NO.:

15-SA 90 P 01-05

SHEET-
FORMAT
DINA4

SCALE
1:5

REV.
0