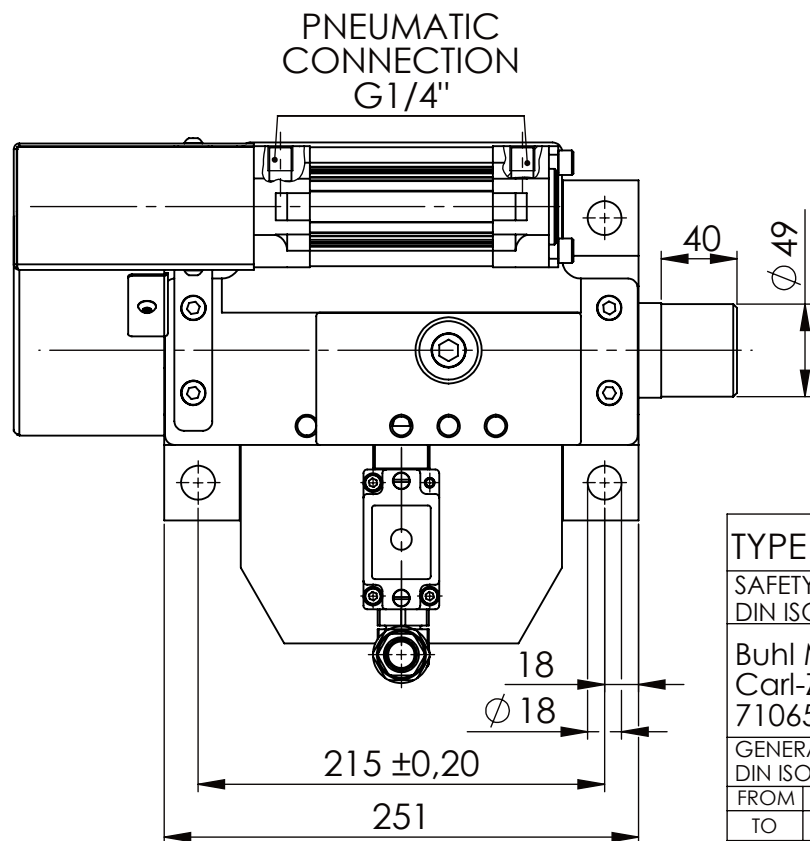
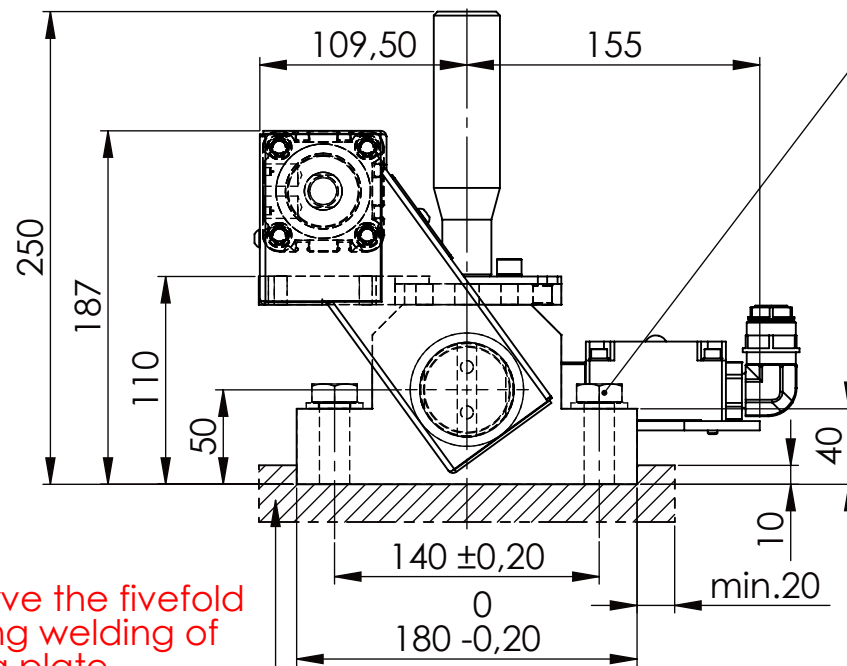
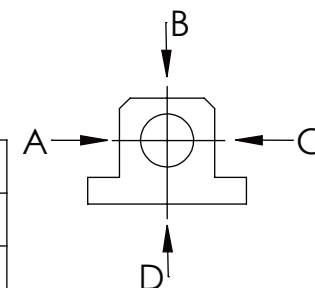


Hexagon Screw DIN 931/DIN EN ISO 4014-M16x60- 8.8, Ma=90Nm,
Washer DIN 125/DIN EN ISO 7089 -A17, retain with Loctite or similar



	A B C	D
F all.	22.000 N	6.185 N
under static load		



TYPE OF DOKUMENT: DATA SHEET

WEIGHT [KG]: 21.39 PROJECTION

SAFETY NOTE
DIN ISO 16016:2007-12

Date Name

DESIGNATION

SHEET-FORMAT
DINA4

Buhl Maschinenbau e.K.
Carl-Zeiss-Str. 2
71065 Sindelfingen

DRAW. 12.10.15 G.Velleuer
APP. 14.10.15 W.Buhl

SAFETY LOCKING

ADDITIONAL DESIGNATION

SCALE

GENERAL TOLERANCE
DIN ISO 2768 m-K

BUHL

SA 50P+H

1:4

FROM	6	30	120	400	1000	2000	4000
TO	6	30	120	400	1000	2000	4000
TOL.±	0.1	0.2	0.3	0.5	0.8	1.2	2.0

DRAWING-NO.:

REV.

15-SA 50 P+H 01-03

0