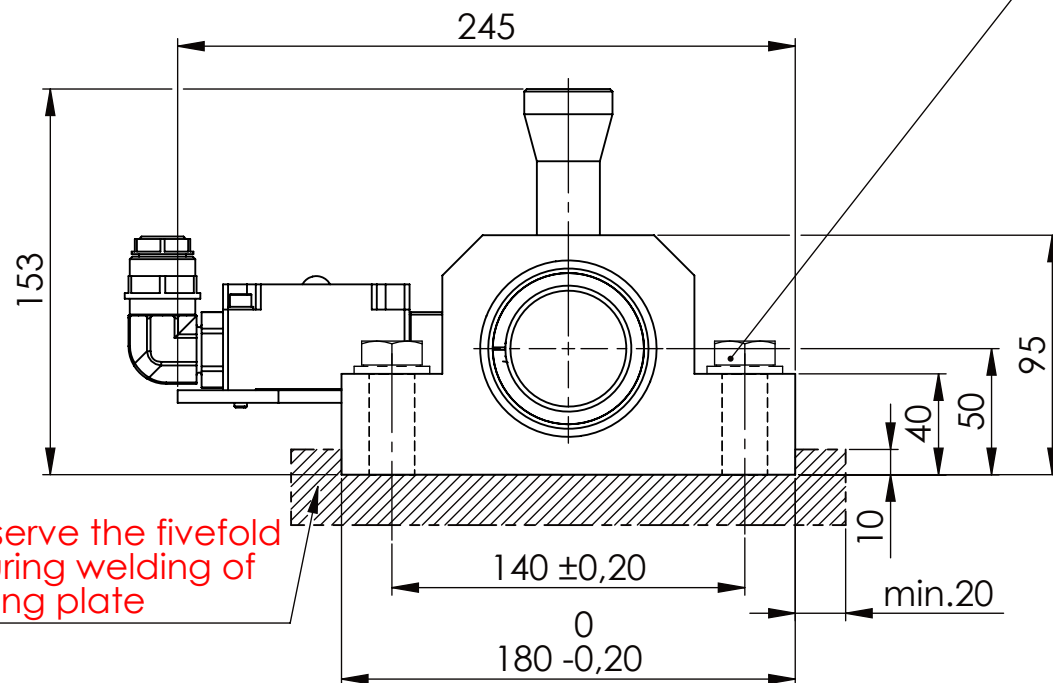
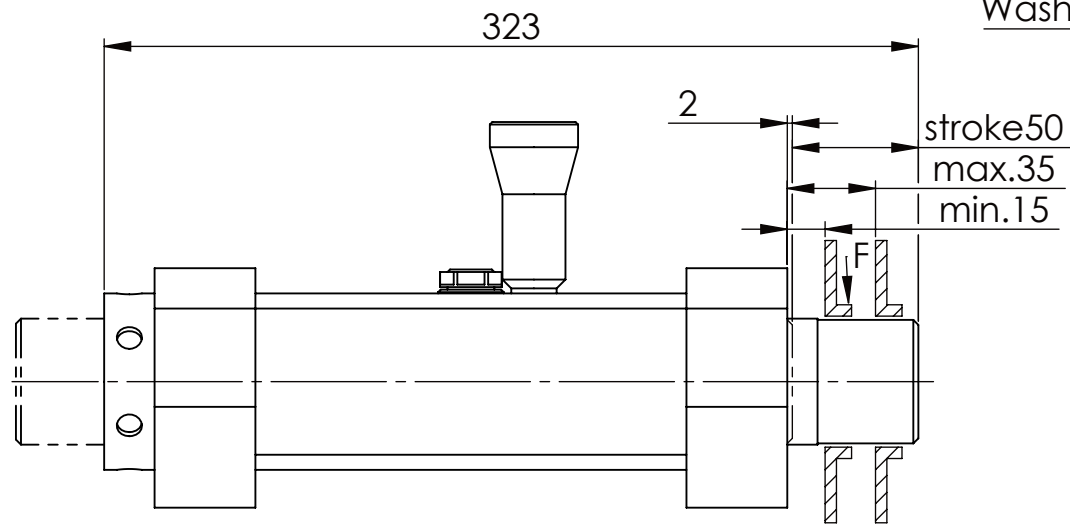
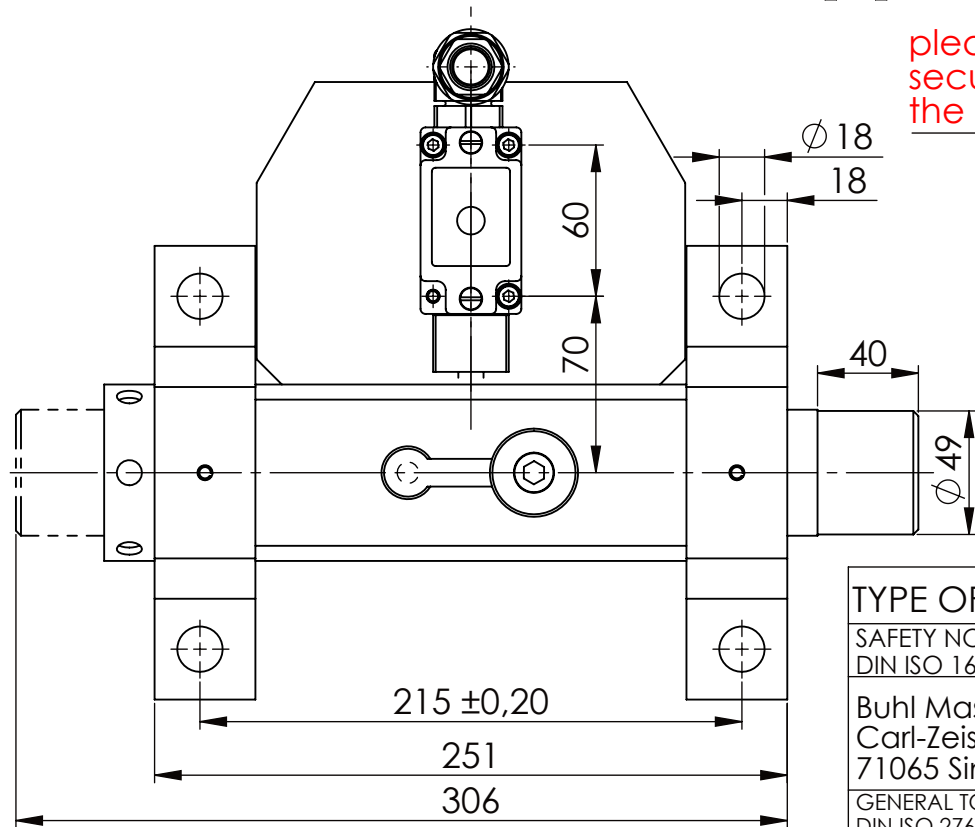


Hexagon Screw DIN 931/DIN EN ISO 4014-M16x60- 8.8, Ma=90Nm,
Washer DIN 125/DIN EN ISO 7089 -A17, retain with Loctite or similar

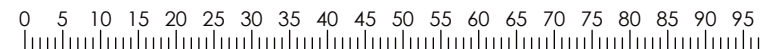
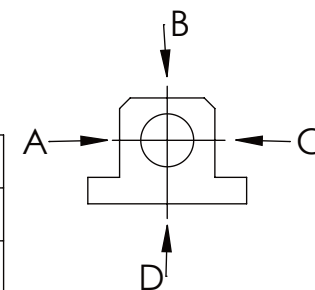


please observe the fivefold
security during welding of
the Retaining plate



longholedisk

A B C	D
F all. 22.000 N	6.185 N
under static load	



TYPE OF DOKUMENT: DATA SHEET

WEIGHT [KG]: 13.31 PROJECTION

SAFETY NOTE
DIN ISO 16016:2007-12

Date Name

DESIGNATION

Buhl Maschinenbau e.K.
Carl-Zeiss-Str. 2
71065 Sindelfingen

DRAW. 06.03.15 G.Velleuer
APP. 06.03.15 W.Buhl

SAFETY LOCKING
ADDITIONAL DESIGNATION
SA 50H

SHEET-FORMAT
DINA4
SCALE
1:3

GENERAL TOLERANCE
DIN ISO 2768 m-K

FROM 6 30 120 400 1000 2000
TO 6 30 120 400 1000 2000 4000
TOL.± 0.1 0.2 0.3 0.5 0.8 1.2 2.0

DRAWING-NO.:
15-SA 50 H 02-03

REV.
0

Buhl Maschinenbau e.K.
Sindelfingen

BUHL