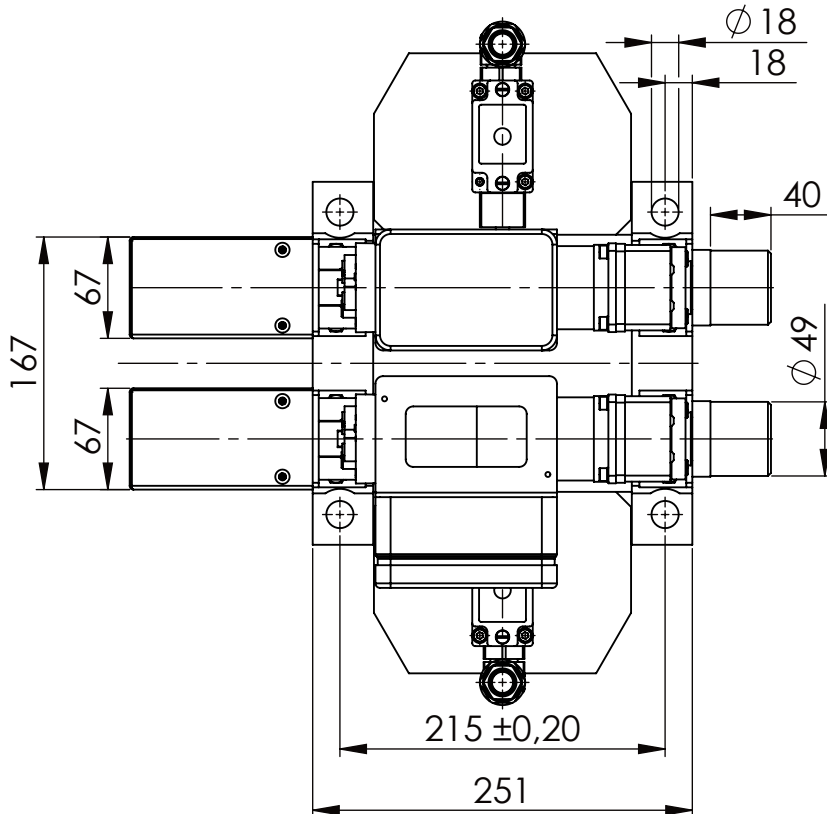
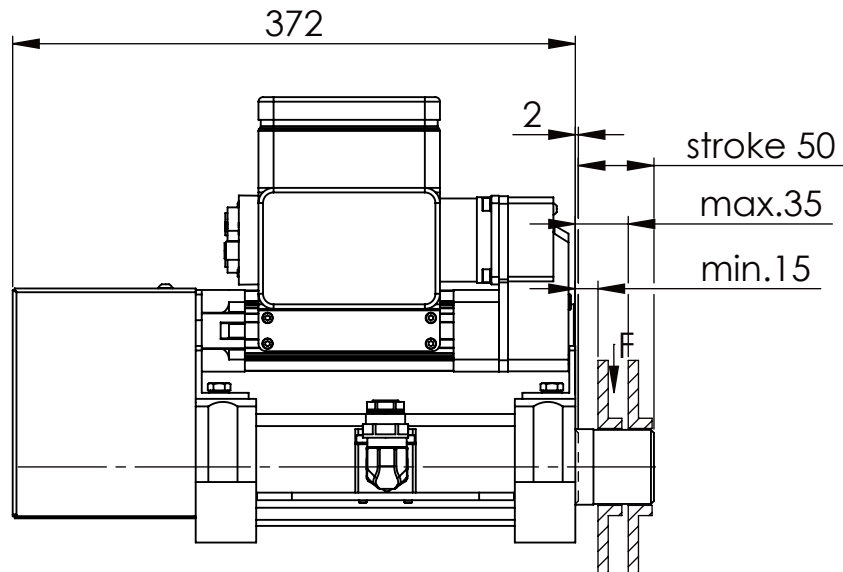
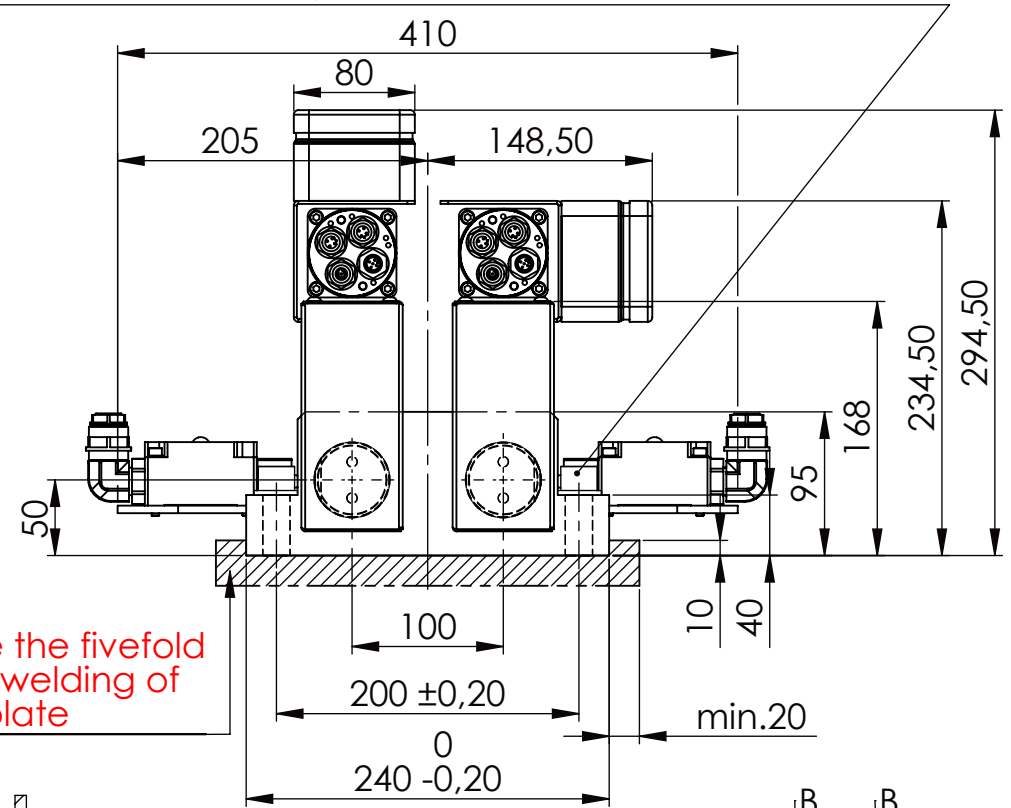


Socket Head Cap Screw DIN 912/DIN EN ISO 4762 - M16x60-8.8, Ma=90Nm,  
Washer DIN 125/DIN EN ISO 7089 -A17, retain with Loctite or similar

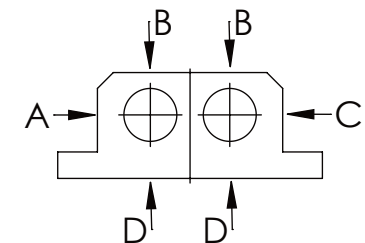


please observe the fivefold  
security during welding of  
the Retaining plate



longholedisk

A	B	C	D
F all.	22.000 N	6.185 N	
under static load			



0 5 10 15 20 25 30 35 40 45 50 55 60 65 70 75 80 85 90 95

TYPE OF DOKUMENT: DATA SHEET

WEIGHT [KG]: 30.36

PROJEKTION

SAFETY NOTE  
DIN ISO 16016:2007-12

Date

Name

DESIGNATION

SHEET-FORMAT

Buhl Maschinenbau e.K.  
Carl-Zeiss-Str. 2  
71065 Sindelfingen

DRAW.

24.11.15

G.Velleuer

SAFETY LOCKING

DINA4

APP.

26.11.15

W.Buhl

ADDITIONAL DESIGNATION

SCALE

GENERAL TOLERANCE  
DIN ISO 2768 m-K

Buhl Maschinenbau e.K.  
Sindelfingen

**BUHL**

SA 50EMO T-1S

1:5

DRAWING-NO.:

REV.

15-SA 50 EMO T-1S 01-03

0

FROM	6	30	120	400	1000	2000
TO	6	30	120	400	1000	2000
TOL.±	0.1	0.2	0.3	0.5	0.8	1.2