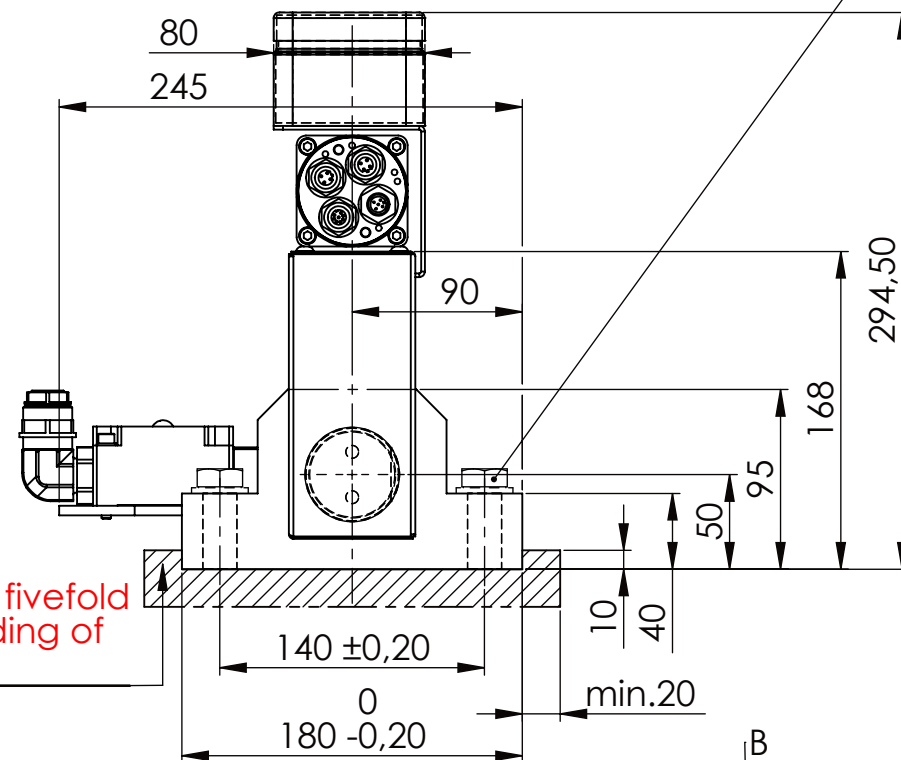


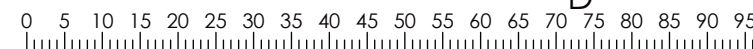
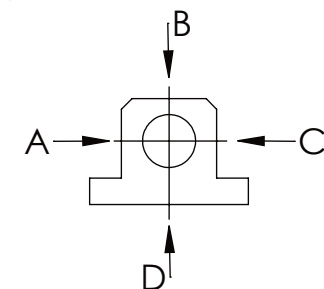
Hexagon Screw DIN 931/DIN EN ISO 4014-M16x60- 8.8, Ma=90Nm,
Washer DIN 125/DIN EN ISO 7089 -A17, retain with Loctite or similar



please observe the fivefold
security during welding of
the Retaining plate



A B C	D
F all. 22.000 N	6.185 N
under static load	



TYPE OF DOKUMENT: DATA SHEET

SAFETY NOTE
DIN ISO 16016:2007-12

Buhl Maschinenbau e.K.
Carl-Zeiss-Str. 2
71065 Sindelfingen

GENERAL TOLERANCE
DIN ISO 2768 m-K

FROM	6	30	120	400	1000	2000
TO	6	30	120	400	1000	2000
TOL.±	0.1	0.2	0.3	0.5	0.8	1.2

3d Maschinenbau
Sindelfingen

BUHL

WEIGHT [KG]: 16.42

PROJEKTION

DESIGNATION

SAFETY LOCKING

ADDITIONAL DESIGNATION

SA 50EMO

DRAWING-NO.:

15-SA 50 EMO 02-05

SHEET-FORMAT
DINA4

SCALE
1:4

REV.
0