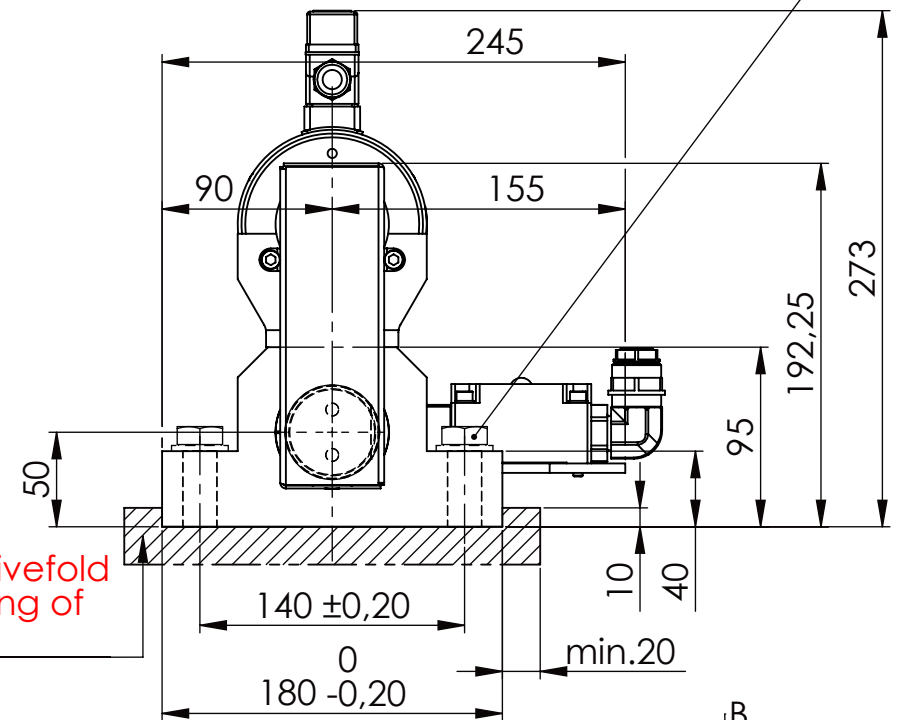
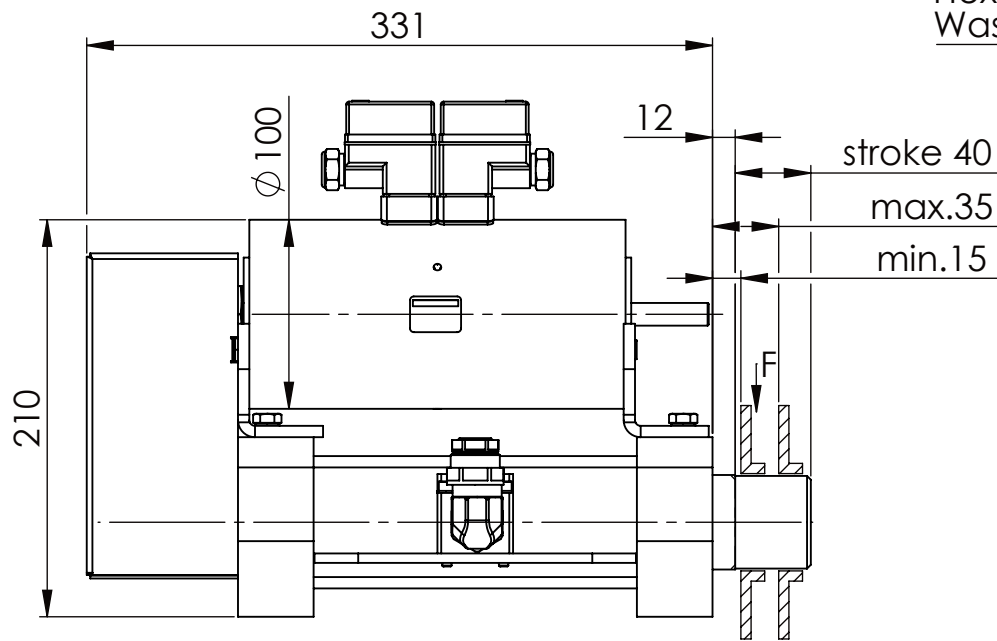
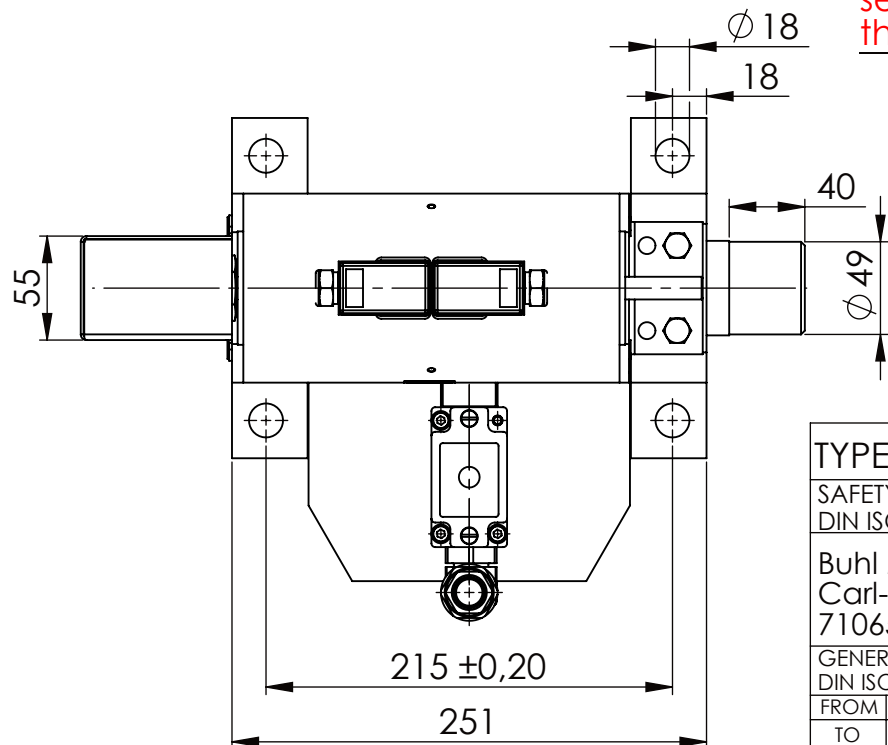


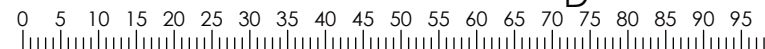
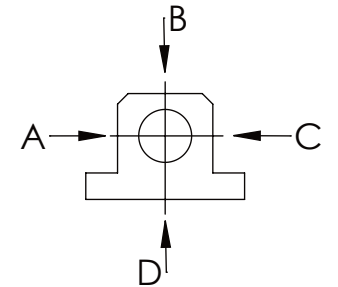
Hexagon Screw DIN 931/DIN EN ISO 4014-M16x60- 8.8, Ma=90Nm,
Washer DIN 125/DIN EN ISO 7089 -A17, retain with Loctite or similar



please observe the fivefold
security during welding of
the Retaining plate



A B C	D
F all. 22.000 N	6.185 N
under static load	



TYPE OF DOKUMENT: DATA SHEET

WEIGHT [KG]: 24.10 PROJEKTION

SAFETY NOTE
DIN ISO 16016:2007-12

Date Name

DESIGNATION

SHEET-FORMAT

Buhl Maschinenbau e.K.
Carl-Zeiss-Str. 2
71065 Sindelfingen

DRAW. 17.02.16 G.Velleuer
APP. 19.02.16 W.Buhl

SAFETY LOCKING

DINA4

GENERAL TOLERANCE
DIN ISO 2768 m-K

ADDITIONAL DESIGNATION

SCALE

FROM	6	30	120	400	1000	2000
TO	6	30	120	400	1000	2000
TOL.±	0.1	0.2	0.3	0.5	0.8	1.2

Buhl Maschinenbau e.K.
Sindelfingen

BUHL

SA 50EM

1:4

DRAWING-NO.:
15-SA 50 EM 01-03

REV.
0