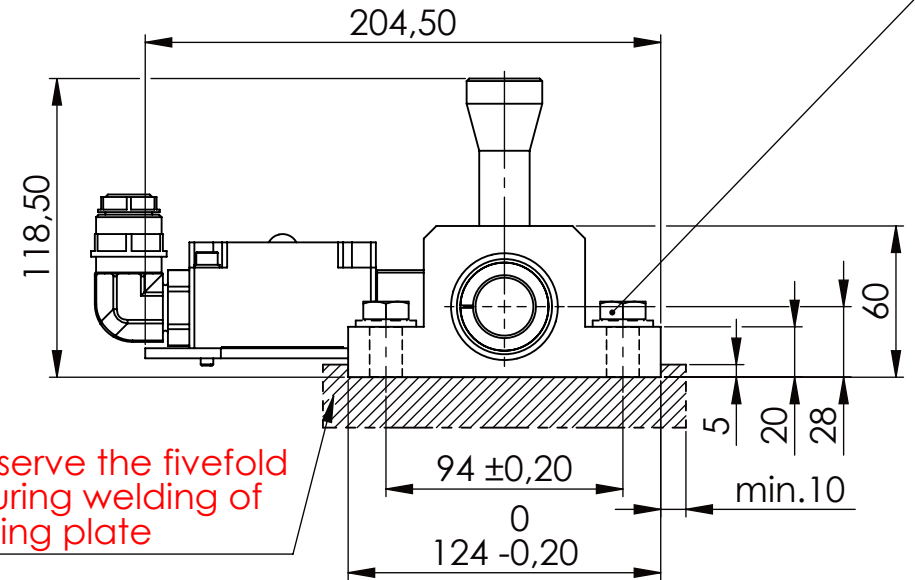
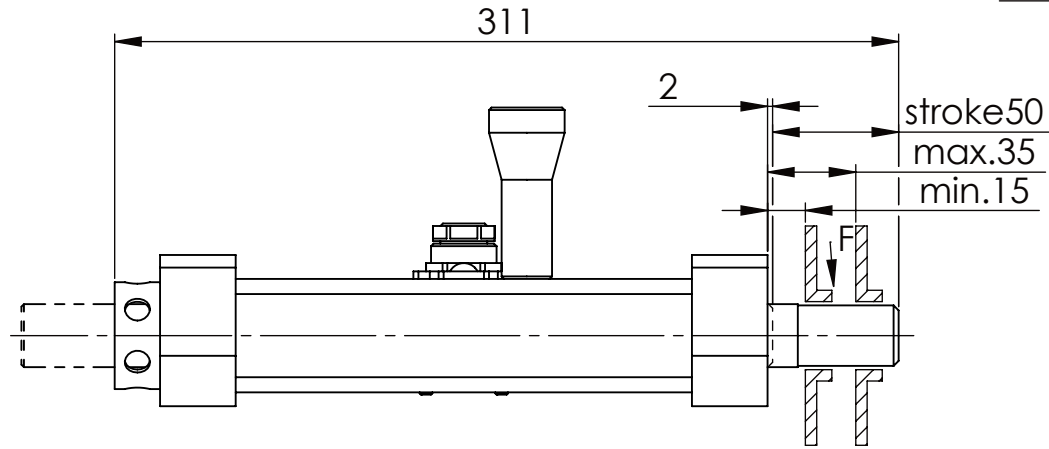
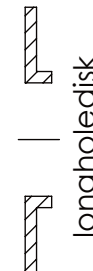
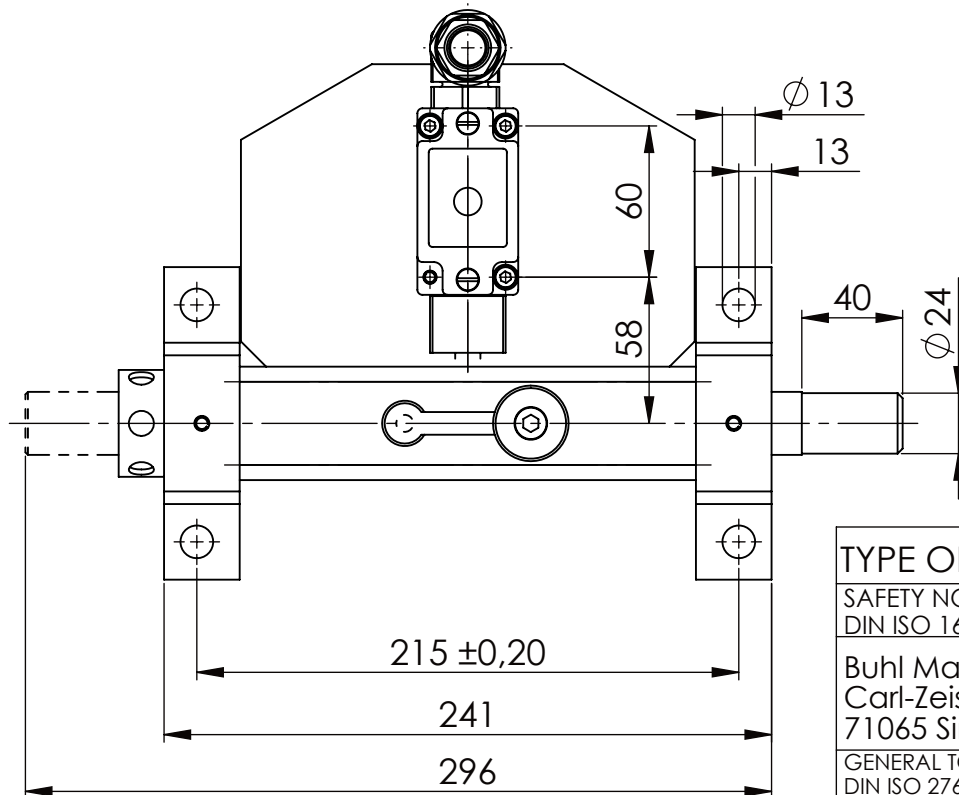


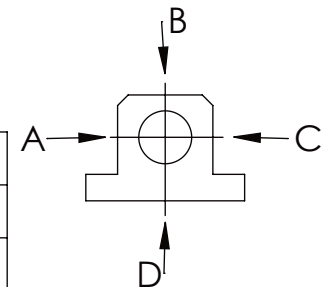
Hexagon Screw DIN 931/DIN EN ISO 4014-M12x40- 8.8, Ma=40Nm,
Washer DIN 125/DIN EN ISO 7089 -A13, retain with Loctite or similar



please observe the fivefold
security during welding of
the Retaining plate



	A	B	C	D
F all.	3.000 N			
under static load				



TYPE OF DOKUMENT: DATA SHEET

WEIGHT [KG]: 4.95

PROJECTION

SAFETY NOTE
DIN ISO 16016:2007-12

Date

Name

DESIGNATION

SHEET-
FORMAT
DINA4

Buhl Maschinenbau e.K.
Carl-Zeiss-Str. 2
71065 Sindelfingen

DRAW.

06.03.15

G.Velleuer

SAFETY LOCKING

APP.

06.03.15

W.Buhl

ADDITIONAL DESIGNATION

SCALE

GENERAL TOLERANCE
DIN ISO 2768 m-K

BUHL

SA 25H

1:3

FROM	6	30	120	400	1000	2000
TO	6	30	120	400	1000	2000
TOL.±	0.1	0.2	0.3	0.5	0.8	1.2

Buhl Maschinenbau e.K.
Sindelfingen

DRAWING-NO.:

REV.

15-SA 25 H 02-03

0