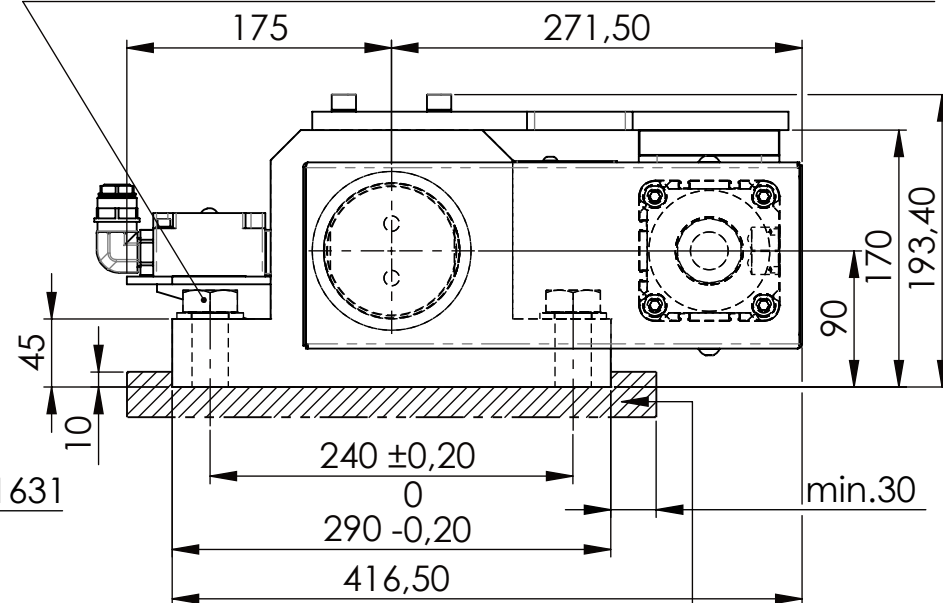
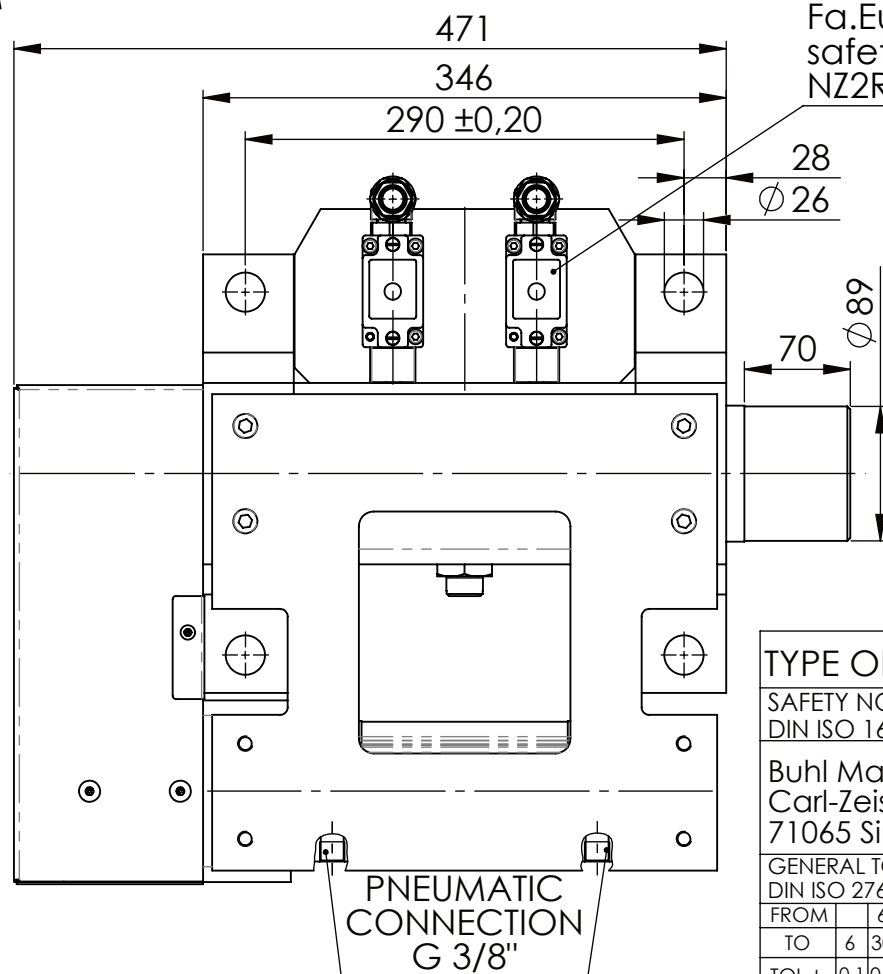


Hexagon Screw DIN 931/DIN EN ISO 4014-M24x90- 8.8,
Ma=760Nm, Washer DIN 125/DIN EN ISO 7089 -A25,
retain with Loctite or similar



please observe the fivefold
security during welding of
the Retaining plate

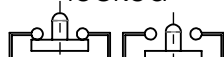


Fa.Euchner,
safety switch,
NZ2RS-511L060C1631

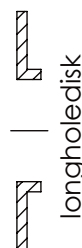
asynchronous
switching



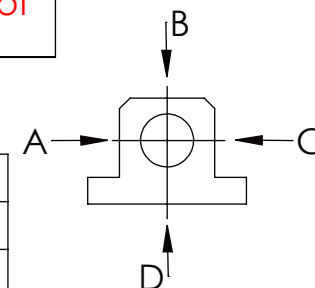
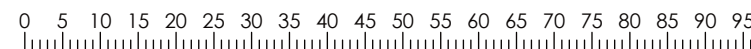
locked



unlocked



	A	B	C	D
F all.	130.000 N	30.000 N		
under static load				



TYPE OF DOKUMENT: DATA SHEET

WEIGHT [KG]: 72.35 PROJECTION

SAFETY NOTE DIN ISO 16016:2007-12		Date	Name
Buhl Maschinenbau e.K. Carl-Zeiss-Str. 2 71065 Sindelfingen		DRAW. 27.11.23	G.Velleuer
GENERAL TOLERANCE DIN ISO 2768 m-K		APP. 27.11.23	W.Buhl
FROM	6	30	120
TO	6	30	120
TOL.±	0.1	0.2	0.3

400	1000	2000	4000
0.5	0.8	1.2	2.0
BUHL			

DESIGNATION	SHEET-FORMAT
SAFETY LOCKING	DINA4
ADDITIONAL DESIGNATION	SCALE
SA 90P	1:5
DRAWING-NO.:	REV.
05-SA 90 P 04-05	1