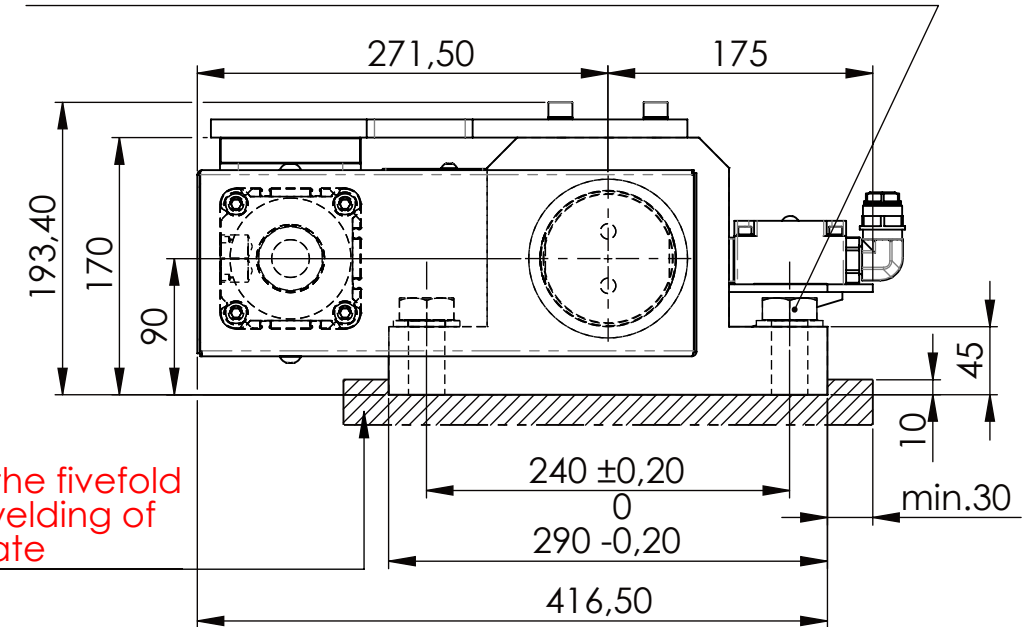
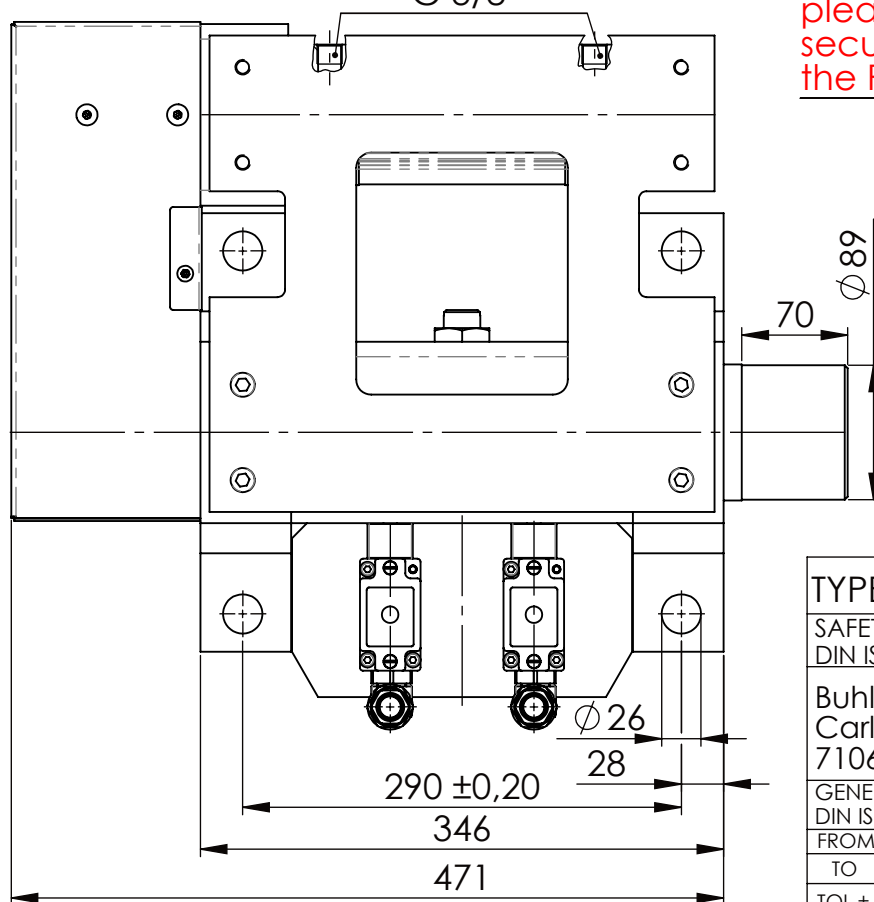


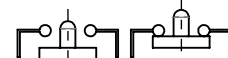
Hexagon Screw DIN 931/DIN EN ISO 4014-M24x90- 8.8,
Ma=760Nm, Washer DIN 125/DIN EN ISO 7089 -A25,
retain with Loctite or similar



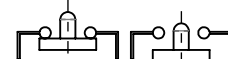
please observe the fivefold
security during welding of
the Retaining plate



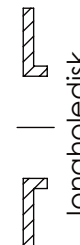
asynchronous
switching



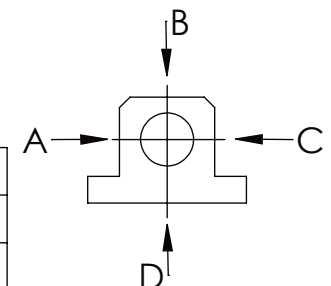
locked



unlocked



	A B C	D
F all.	130.000 N	30.000 N
under static load		



TYPE OF DOKUMENT: DATA SHEET

WEIGHT [KG]: 72.35 PROJECTION:

SAFETY NOTE
DIN ISO 16016:2007-12

Buhl Maschinenbau e.K.
Carl-Zeiss-Str. 2
71065 Sindelfingen

	Date	Name
DRAW.	24.11.23	G.Velleuer
APP.	24.11.23	W.Buhl

DESIGNATION

SAFETY LOCKING

ADDITIONAL DESIGNATION

SA 90P

DRAWING-NO.:
05-SA 90 P 03-05

SHEET-FORMAT
DINA4

SCALE
1:5

GENERAL TOLERANCE
DIN ISO 2768 m-K

FROM	6	30	120	400	1000	2000
TO	6	30	120	400	1000	2000
TOL.±	0.1	0.2	0.3	0.5	0.8	1.2
						2.0



REV.
1