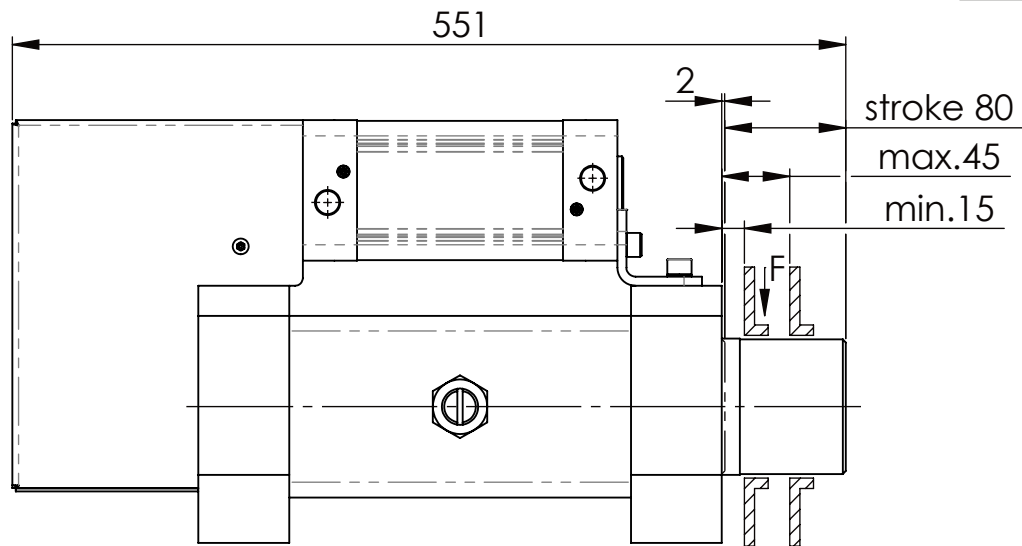
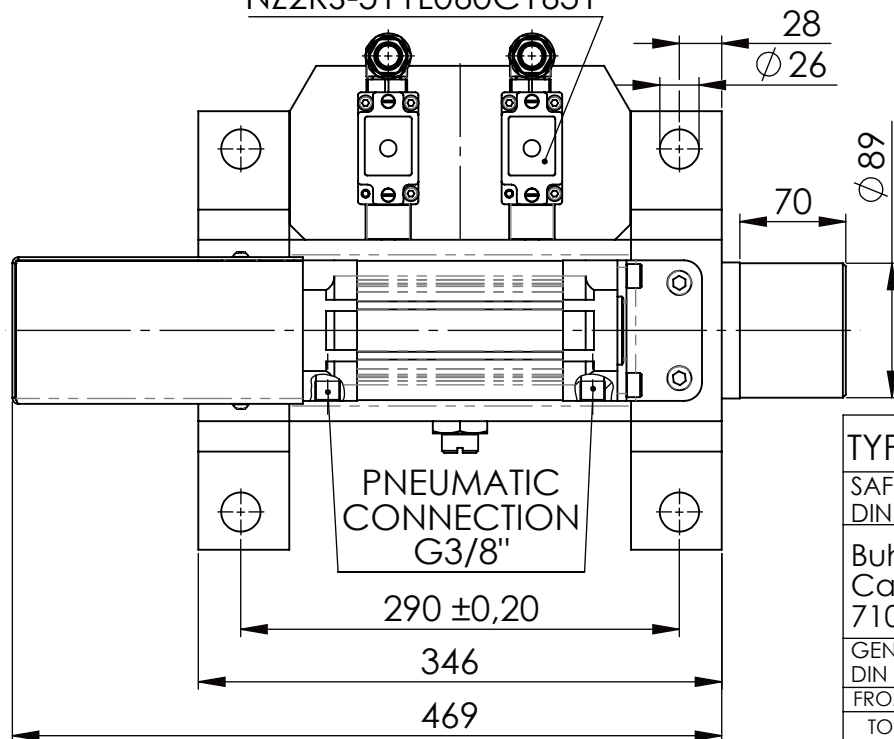


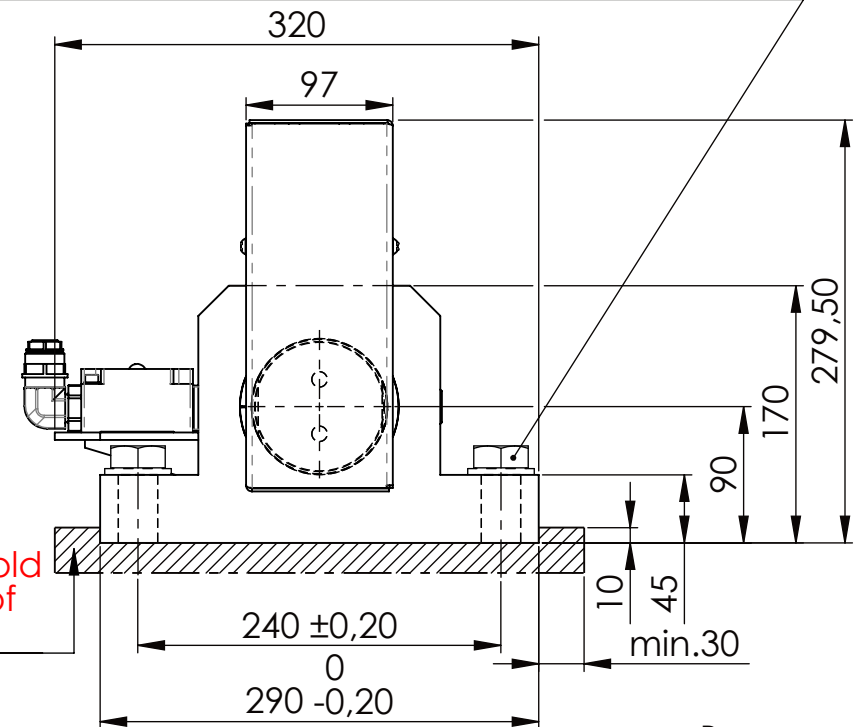
Hexagon Screw DIN 931/DIN EN ISO 4014-M24x90- 8.8, Ma=760Nm,  
Washer DIN 125/DIN EN ISO 7089 -A25, retain with Loctite or similar



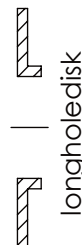
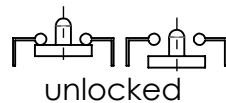
Fa.Euchner,  
safety switch,  
NZ2RS-511L060C1631



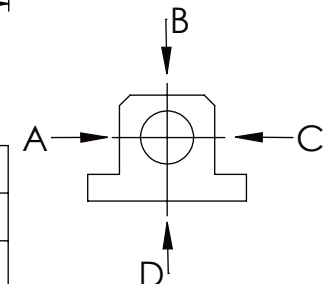
please observe the fivefold  
security during welding of  
the Retaining plate



asynchronous  
switching



| A                 | B         | C        | D |
|-------------------|-----------|----------|---|
| F all.            | 130.000 N | 30.000 N |   |
| under static load |           |          |   |



TYPE OF DOKUMENT: DATA SHEET

SAFETY NOTE  
DIN ISO 16016:2007-12

Buhl Maschinenbau e.K.  
Carl-Zeiss-Str. 2  
71065 Sindelfingen

|       |          |            |
|-------|----------|------------|
|       | Date     | Name       |
| DRAW. | 24.11.23 | G.Velleuer |
| APP.  | 24.11.23 | W.Buhl     |

WEIGHT [KG]: 61.49 PROJECTION

DESIGNATION

SAFETY LOCKING

ADDITIONAL DESIGNATION

SA 90P

DRAWING-NO.:  
05-SA 90 P 02-05

SHEET-FORMAT  
DINA4

SCALE  
1:5

REV.  
1

GENERAL TOLERANCE  
DIN ISO 2768 m-K

| FROM  | 6   | 30  | 120 | 400 | 1000 | 2000 |
|-------|-----|-----|-----|-----|------|------|
| TO    | 6   | 30  | 120 | 400 | 1000 | 2000 |
| TOL.± | 0.1 | 0.2 | 0.3 | 0.5 | 0.8  | 1.2  |

