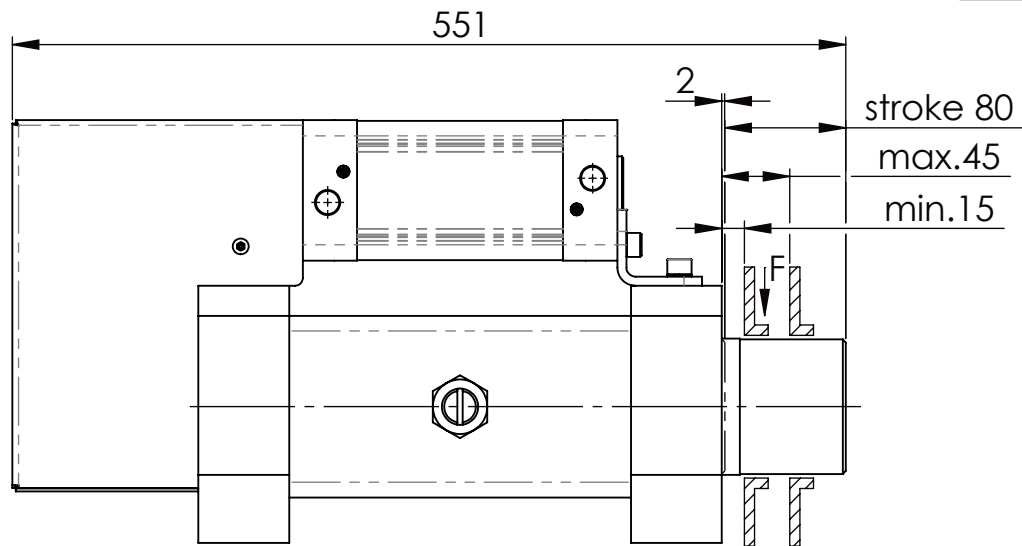
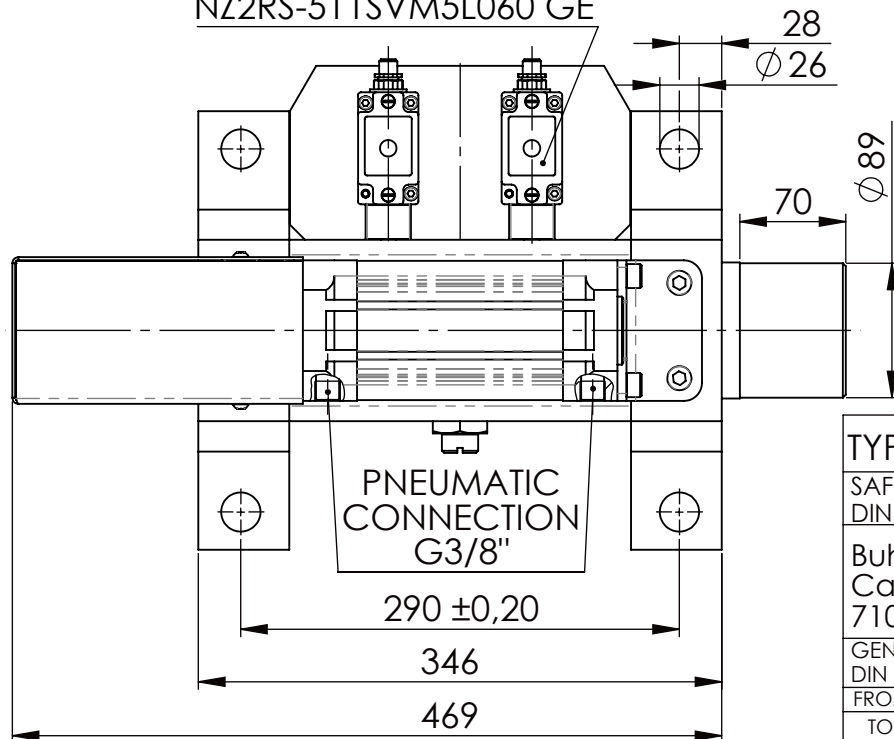


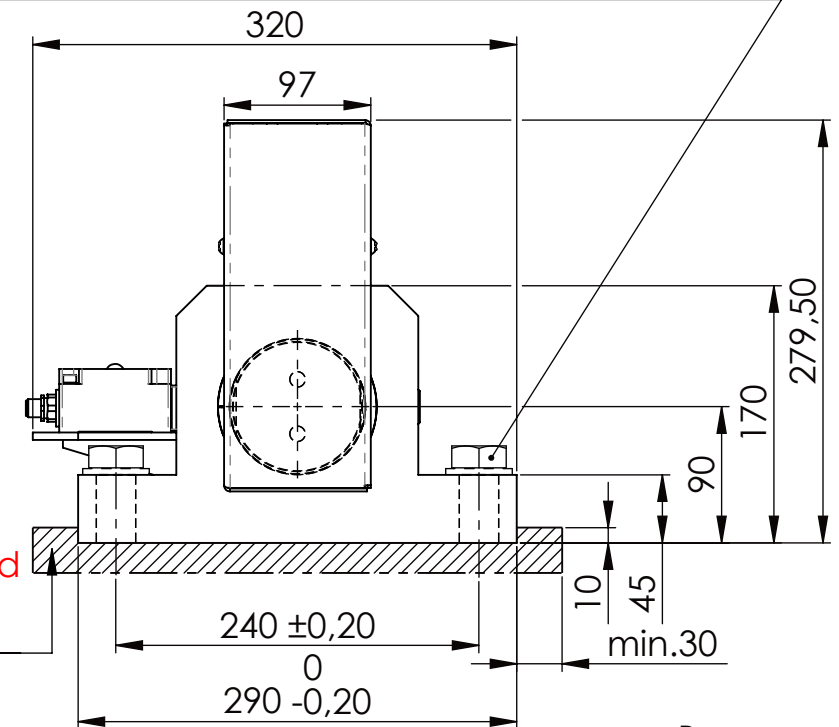
Hexagon Screw DIN 931/DIN EN ISO 4014-M24x90- 8.8, Ma=760Nm,
Washer DIN 125/DIN EN ISO 7089 -A25, retain with Loctite or similar



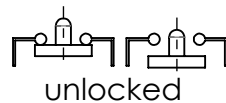
Fa.Euchner,
safety switch,
NZ2RS-511SVM5L060 GE



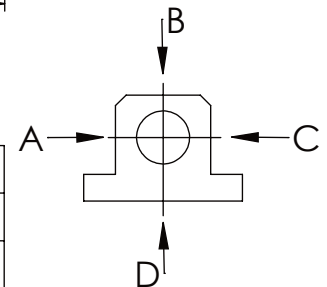
please observe the fivefold
security during welding of
the Retaining plate



asynchronous
switching



A	B	C	D
F all.	130.000 N	30.000 N	
under static load			



TYPE OF DOKUMENT: DATA SHEET

SAFETY NOTE
DIN ISO 16016:2007-12

Buhl Maschinenbau e.K.
Carl-Zeiss-Str. 2
71065 Sindelfingen

	Date	Name
DRAW.	14.12.23	G.Velleuer
APP.	14.12.23	W.Buhl

WEIGHT [KG]: 61.49 PROJECTION

DESIGNATION

SAFETY LOCKING

ADDITIONAL DESIGNATION

SA 90P

DRAWING-NO.:
05-SA 90 P 02-03M12

SHEET-FORMAT
DINA4

SCALE
1:5

REV.
1

GENERAL TOLERANCE
DIN ISO 2768 m-K

FROM	6	30	120	400	1000	2000
TO	6	30	120	400	1000	2000
TOL.±	0.1	0.2	0.3	0.5	0.8	1.2

