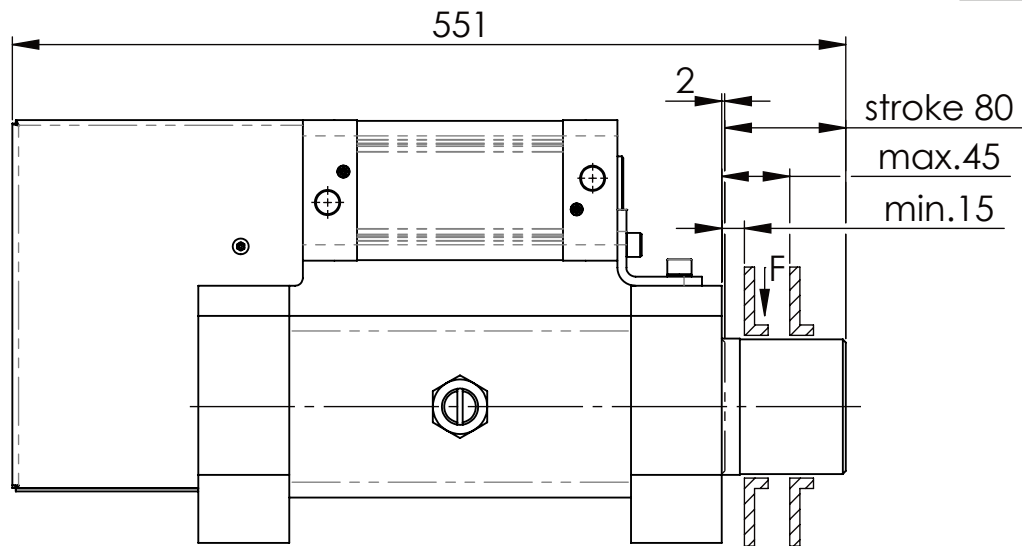
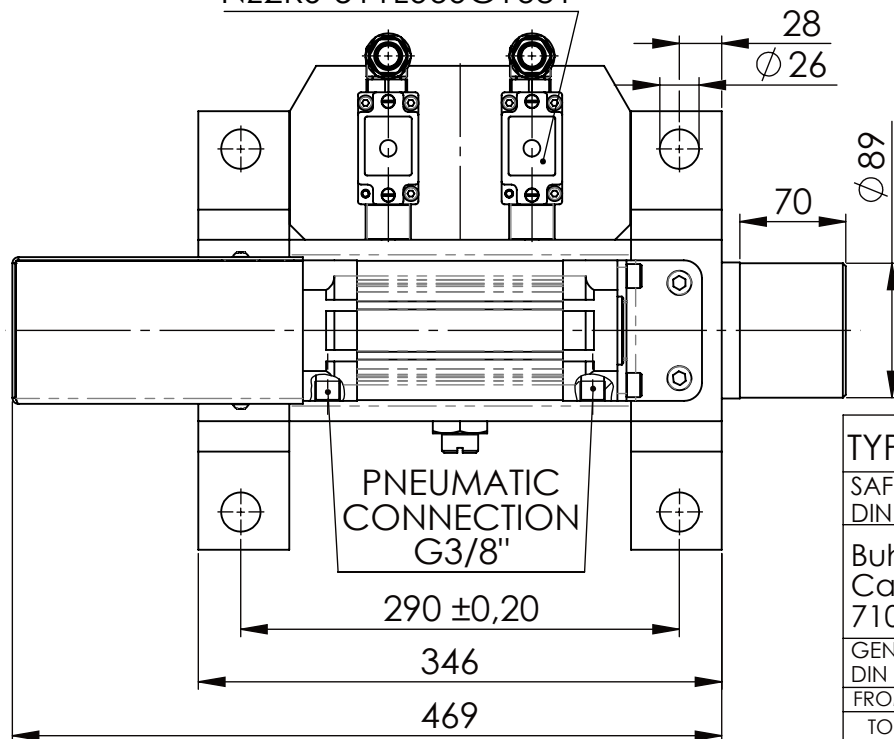


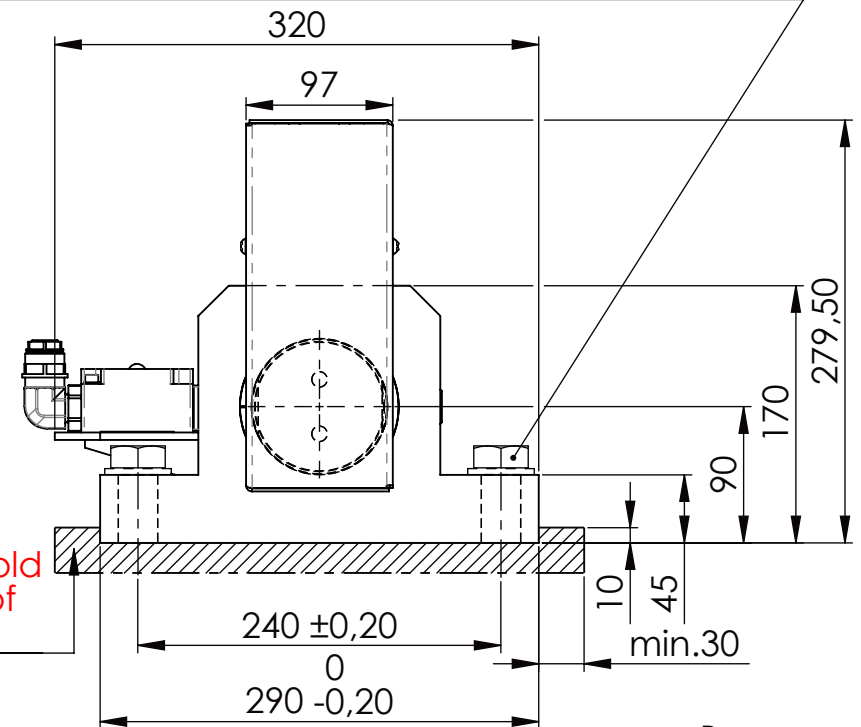
Hexagon Screw DIN 931/DIN EN ISO 4014-M24x90- 8.8, Ma=760Nm,  
Washer DIN 125/DIN EN ISO 7089 -A25, retain with Loctite or similar



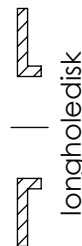
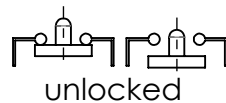
Fa.Euchner,  
safety switch,  
NZ2RS-511L060C1631



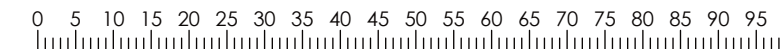
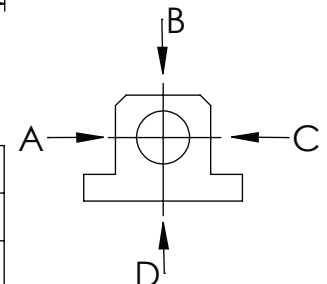
please observe the fivefold  
security during welding of  
the Retaining plate



asynchronous  
switching



A	B	C	D
F all.			130.000 N
			30.000 N
under static load			



TYPE OF DOKUMENT: DATA SHEET

SAFETY NOTE  
DIN ISO 16016:2007-12  
Buhl Maschinenbau e.K.  
Carl-Zeiss-Str. 2  
71065 Sindelfingen

GENERAL TOLERANCE DIN ISO 2768 m-K							
FROM	6	30	120	400	1000	2000	
TO	6	30	120	400	1000	2000	4000
TOL.±	0.1	0.2	0.3	0.5	0.8	1.2	2.0

Date	Name
DRAW. 14.12.23	G.Velleuer
APP. 14.12.23	W.Buhl

**BUHL**

WEIGHT [KG]: 61.49 PROJECTION:

DESIGNATION	SHEET-FORMAT
SAFETY LOCKING	DINA4
ADDITIONAL DESIGNATION	SCALE
SA 90P	1:5
DRAWING-NO.:	REV.
05-SA 90 P 02-03	1