

Technical drawing of a machine component, showing a side view with dimensions. The total length is 2000mm. A specific section is dimensioned as 551mm. A gap of 2mm is indicated between two parts. The drawing also shows a force F applied to a component, and a dimension of 80mm for the hub. The text 'Hub80' and 'max.45 min.15' are present, indicating a range of values for a specific dimension.

Fa.Euchner,
Sicherheitsschalter,
NZ2RS-511L060C1631

Hub80
max.45
min.15

Technical drawing of a mechanical part (Fig. 1) showing a top view. The drawing includes the following dimensions and features:

- Overall width: 320
- Overall height: 279.50
- Central rectangular section width: 97
- Distance from top edge to center of circular feature: 170
- Distance from center of circular feature to bottom edge: 90
- Distance from bottom edge to the start of the base: 45
- Base thickness: 10
- Minimum distance from left edge to base: min.30
- Distance from left edge to center of circular feature: 240 ± 0.20
- Distance from center of circular feature to right edge: 0
- Distance from left edge to right edge: 290 -0.20
- Red label on the right side: b H Si

beim Anschweißen der Halteplatte auf 5-fache Sicherheit achten

verriegelt

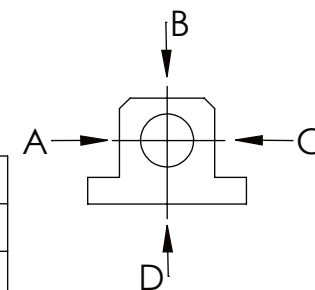
entriegelt

— | —

Langlochscheibe

	A B C	D
F _{zul.}	130.000 N	30.000 N

bei stat. Belastung



BUHL

Revision
1