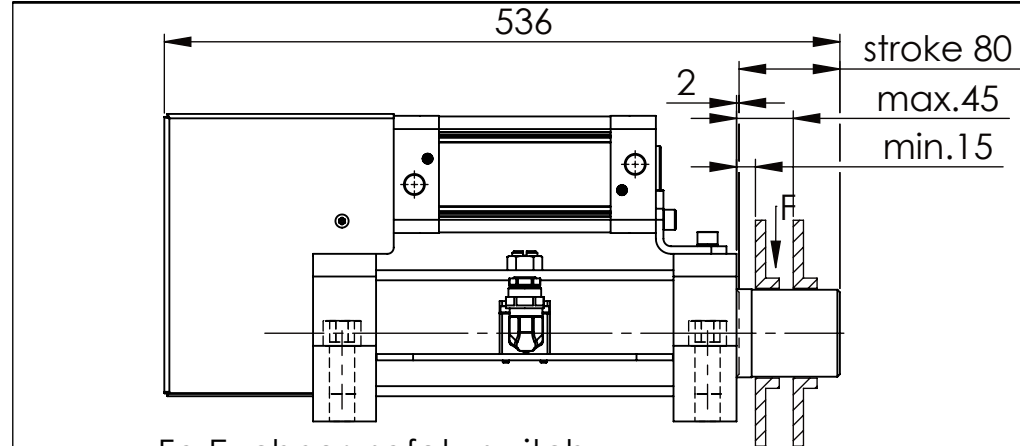


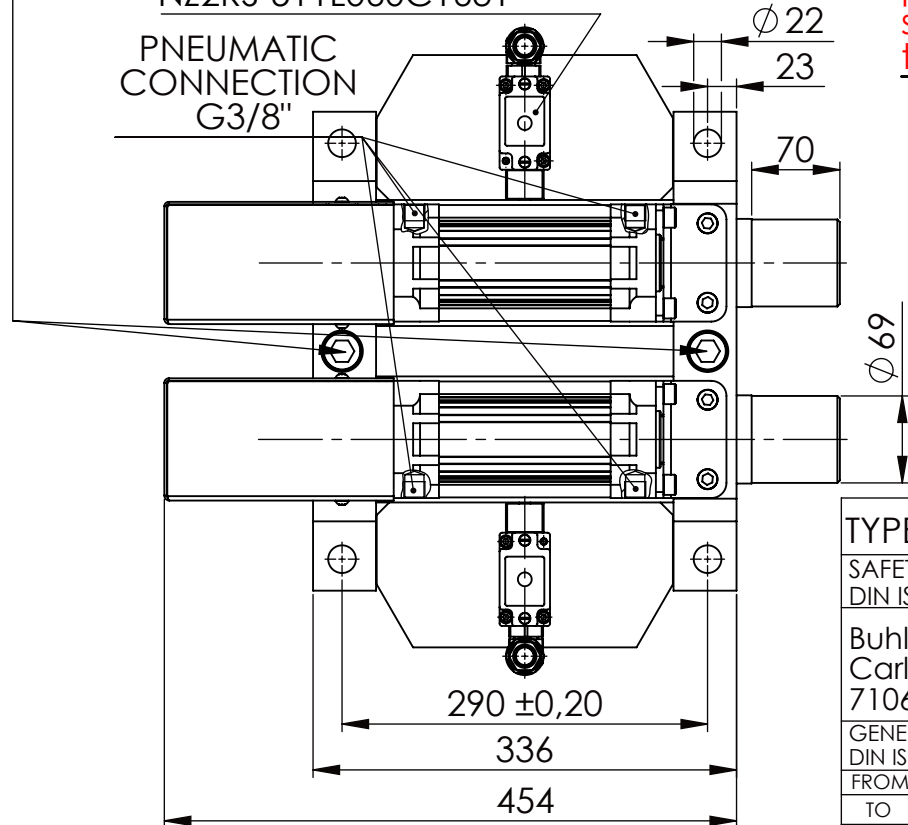
Hexagon Screw DIN 931/DIN EN ISO 4014-M20x90- 8.8, Ma=320Nm,
Washer DIN 125/DIN EN ISO 7089 -A21, retain with Loctite or similar

Socket Head Cap Screw DIN 912/DIN EN ISO 4762 - M20x90-8.8,
Ma=320Nm, retain with Loctite or similar



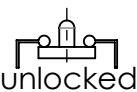
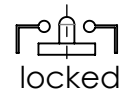
Fa.Euchner, safety switch,
NZ2RS-511L060C1631

PNEUMATIC
CONNECTION
G3/8"

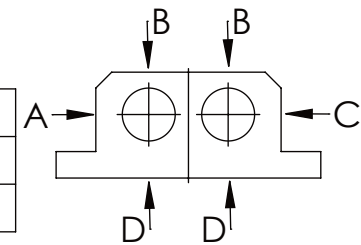
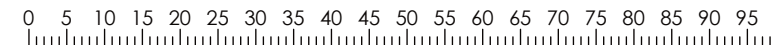


please observe the fivefold
security during welding of
the Retaining plate

safety locking
with one
switch/bold



A B C	D
F all. 60.000 N	17.000 N
under static load	



TYPE OF DOKUMENT: DATA SHEET

SAFETY NOTE
DIN ISO 16016:2007-12

Buhl Maschinenbau e.K.
Carl-Zeiss-Str. 2
71065 Sindelfingen

GENERAL TOLERANCE
DIN ISO 2768 m-K

FROM	6	30	120	400	1000	2000
TO	6	30	120	400	1000	2000
TOL.±	0.1	0.2	0.3	0.5	0.8	1.2

Buhl Maschinenbau e.K.
Sindelfingen

BUHL

WEIGHT [KG]: 77.85

PROJECTION

DESIGNATION

SAFETY LOCKING

ADDITIONAL DESIGNATION

SA 70PT-1S

DRAWING-NO.:

05-SA 70 PT-1S 01-03

SHEET-
FORMAT
DINA4

SCALE
1:6

REV.
0