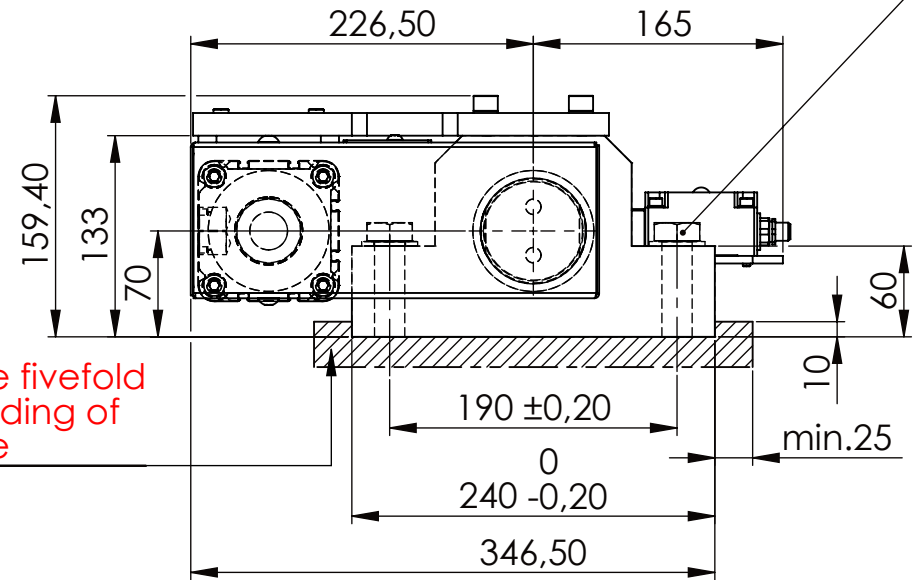
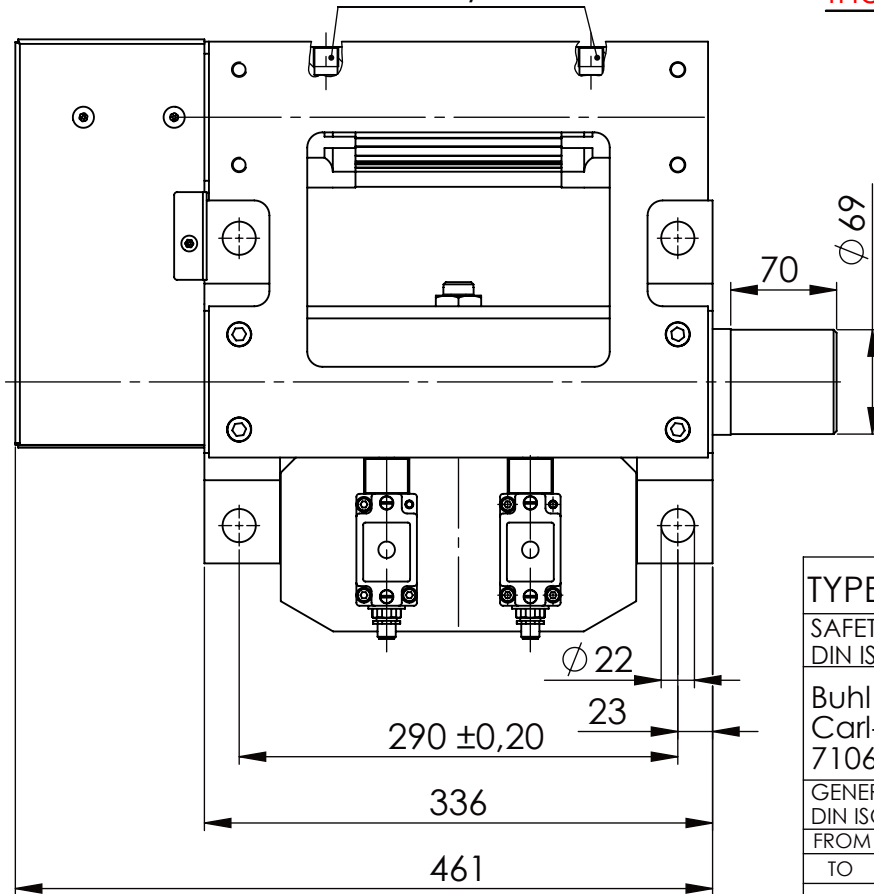


Hexagon Screw DIN 931/DIN EN ISO 4014-M20x90- 8.8, Ma=320Nm,  
Washer DIN 125/DIN EN ISO 7089 -A21, retain with Loctite or similar

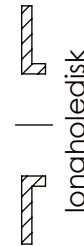
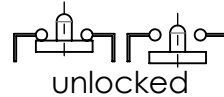


please observe the fivefold  
security during welding of  
the Retaining plate

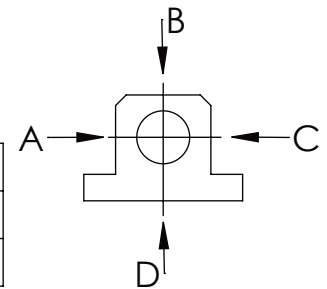
PNEUMATIC  
CONNECTION  
G 3/8"



asynchronous  
switching



	A B C	D
F all.	60.000 N	17.000 N
under static load		



TYPE OF DOKUMENT: DATA SHEET

WEIGHT [KG]: 48.68

PROJECTION

SAFETY NOTE  
DIN ISO 16016:2007-12

Buhl Maschinenbau e.K.  
Carl-Zeiss-Str. 2  
71065 Sindelfingen

	Date	Name
DRAW.	23.06.17	G.Velleuer
APP.	23.06.17	W.Buhl

DESIGNATION

SAFETY LOCKING

ADDITIONAL DESIGNATION

SA 70P

DRAWING-NO.:

05-SA 70 P 03-05M12

SHEET-  
FORMAT  
DINA4

SCALE  
1:5

REV.  
0

GENERAL TOLERANCE  
DIN ISO 2768 m-K

FROM	6	30	120	400	1000	2000
TO	6	30	120	400	1000	2000
TOL.±	0.1	0.2	0.3	0.5	0.8	1.2

Buhl Maschinenbau e.K.  
Sindelfingen

**BUHL**