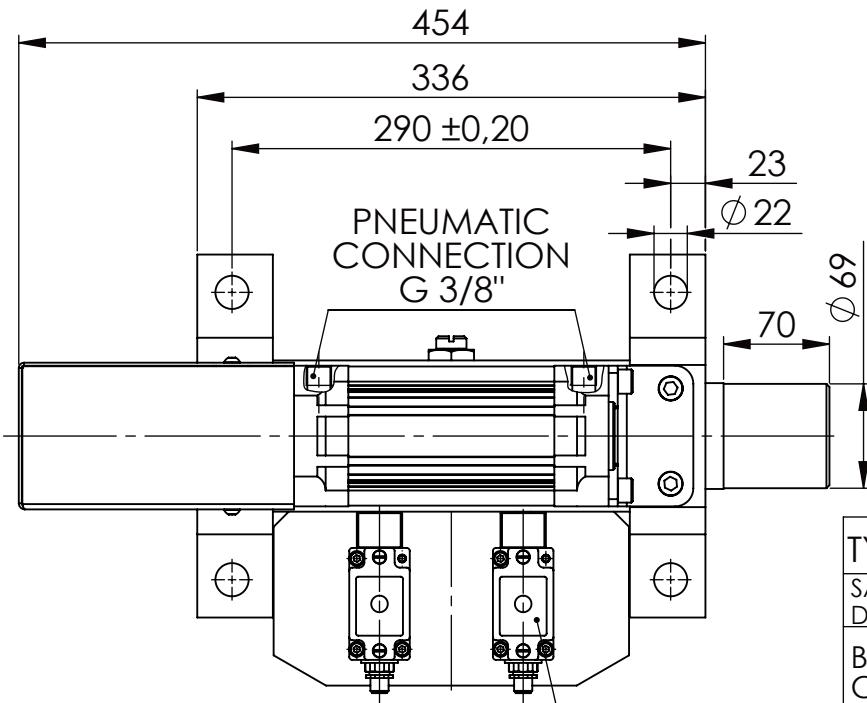
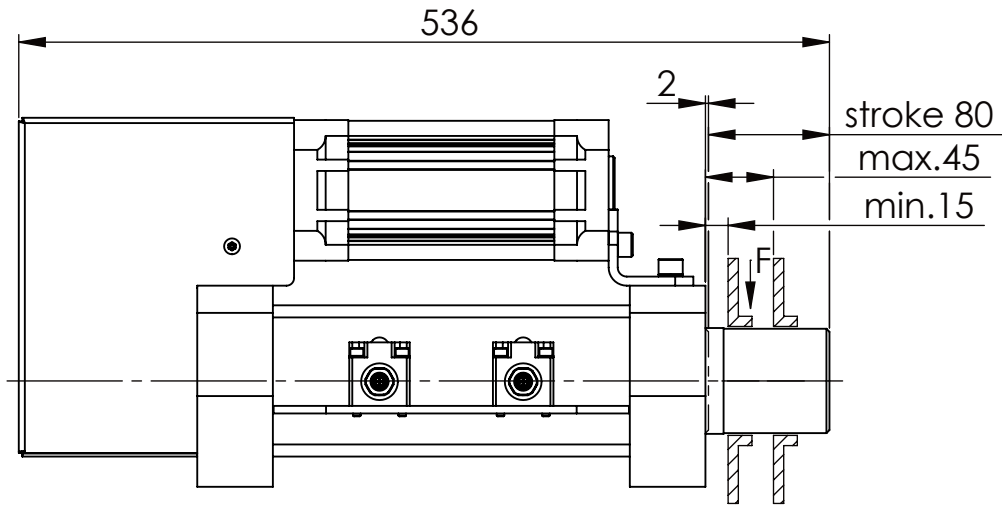
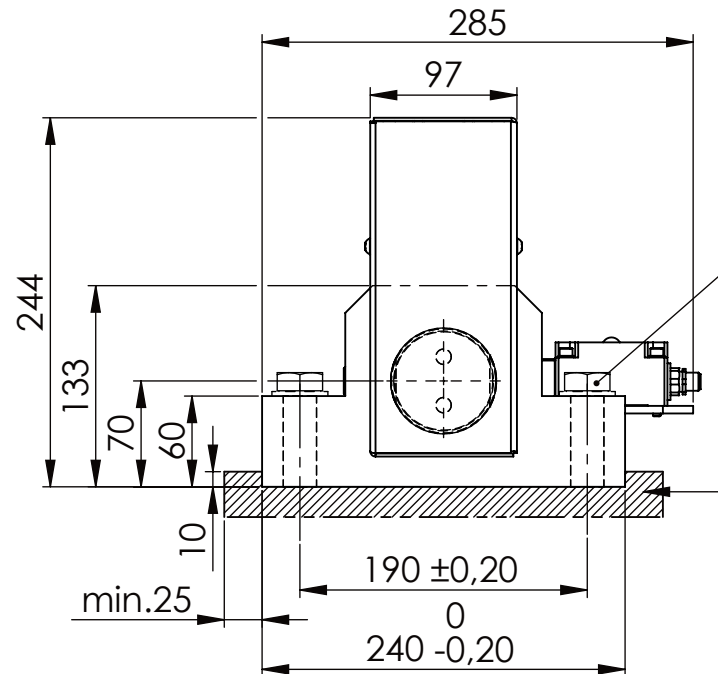


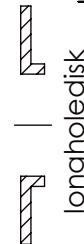
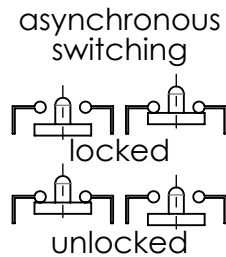
Hexagon Screw DIN 931/DIN EN ISO 4014-M20x90- 8.8, Ma=320Nm,
Washer DIN 125/DIN EN ISO 7089 -A21, retain with Loctite or similar



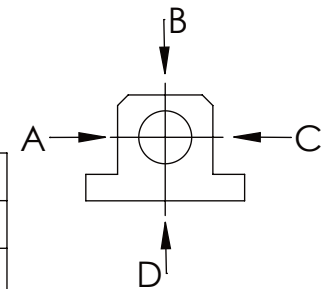
Fa.Euchner, safety switch,
NZ2RS-511SVM5L060 GE



please observe the fivefold
security during welding of
the Retaining plate



	A	B	C	D
F all.	60.000 N	60.000 N	60.000 N	17.000 N
under static load				



TYPE OF DOKUMENT: DATA SHEET

SAFETY NOTE
DIN ISO 16016:2007-12

Buhl Maschinenbau e.K.
Carl-Zeiss-Str. 2
71065 Sindelfingen

DATE

NAME

DRAW. 23.06.17 G.Velleuer

APP. 23.06.17 W.Buhl

GENERAL TOLERANCE
DIN ISO 2768 m-K

FROM	6	30	120	400	1000	2000
TO	6	30	120	400	1000	2000
TOL.±	0.1	0.2	0.3	0.5	0.8	1.2

Buhl Maschinenbau e.K.
Sindelfingen

BUHL

WEIGHT [KG]: 40.86

PROJECTION

DESIGNATION

SAFETY LOCKING

ADDITIONAL DESIGNATION

SA 70P

DRAWING-NO.:

05-SA 70 P 01-05M12

SHEET-
FORMAT
DINA4

SCALE
1:5

REV.
0