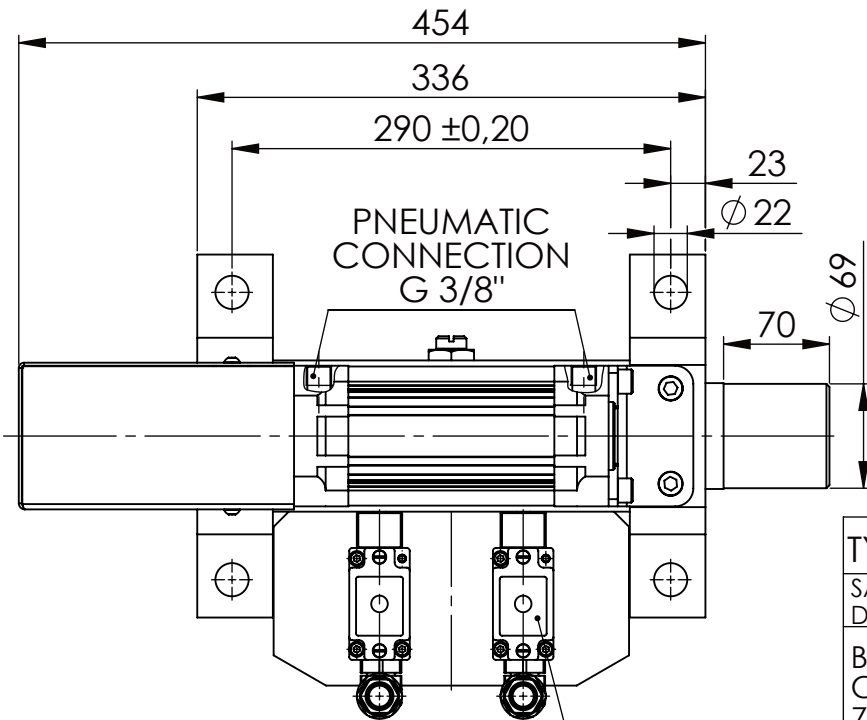
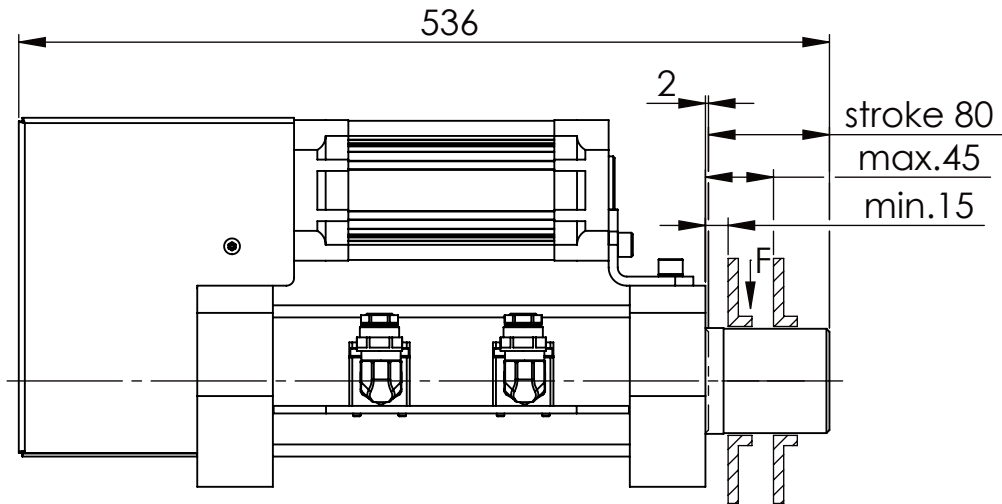
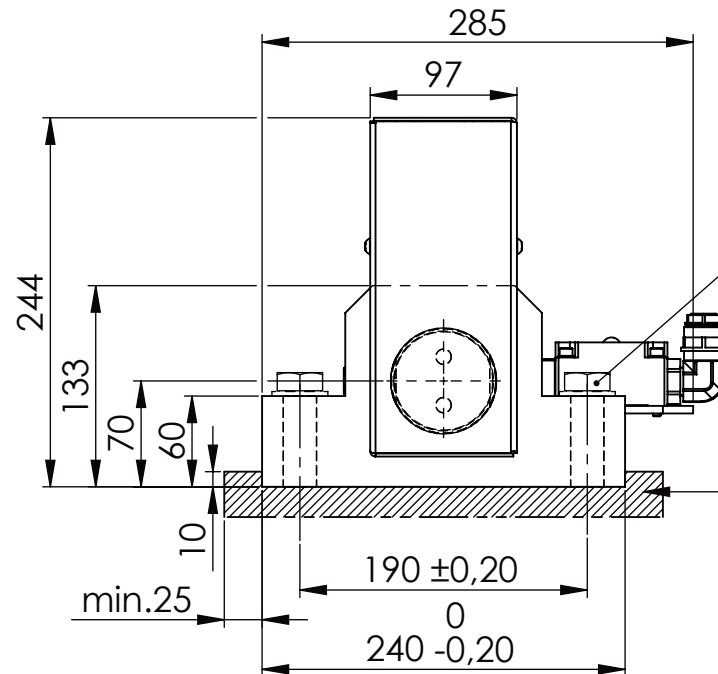


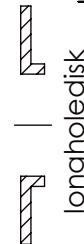
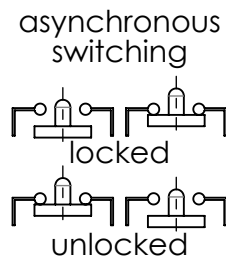
Hexagon Screw DIN 931/DIN EN ISO 4014-M20x90- 8.8, Ma=320Nm,
Washer DIN 125/DIN EN ISO 7089 -A21, retain with Loctite or similar



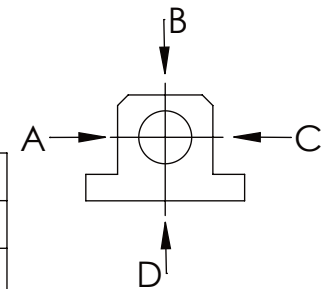
Fa.Euchner, safety switch,
NZ2RS-511L060C1631



please observe the fivefold
security during welding of
the Retaining plate



| | A | B | C | D |
|-------------------|----------|----------|----------|----------|
| F all. | 60.000 N | 60.000 N | 60.000 N | 17.000 N |
| under static load | | | | |



TYPE OF DOKUMENT: DATA SHEET

WEIGHT [KG]: 40.86

PROJECTION

SAFETY NOTE

DIN ISO 16016:2007-12

Buhl Maschinenbau e.K.
Carl-Zeiss-Str. 2
71065 Sindelfingen

DRAW.

Date

Name

APP.

Date

Name

DESIGNATION

SAFETY LOCKING

ADDITIONAL DESIGNATION

SA 70P

DRAWING-NO.:

05-SA 70 P 01-03

SHEET-FORMAT

DINA4

SCALE

1:5

REV.

0

GENERAL TOLERANCE
DIN ISO 2768 m-K

| FROM | 6 | 30 | 120 | 400 | 1000 | 2000 |
|-------|-----|-----|-----|-----|------|------|
| TO | 6 | 30 | 120 | 400 | 1000 | 2000 |
| TOL.± | 0.1 | 0.2 | 0.3 | 0.5 | 0.8 | 1.2 |

Buhl Maschinenbau e.K.
Sindelfingen

BUHL