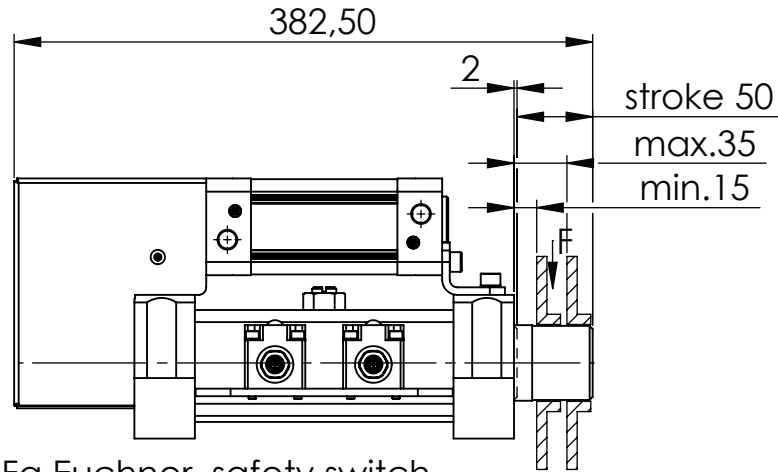
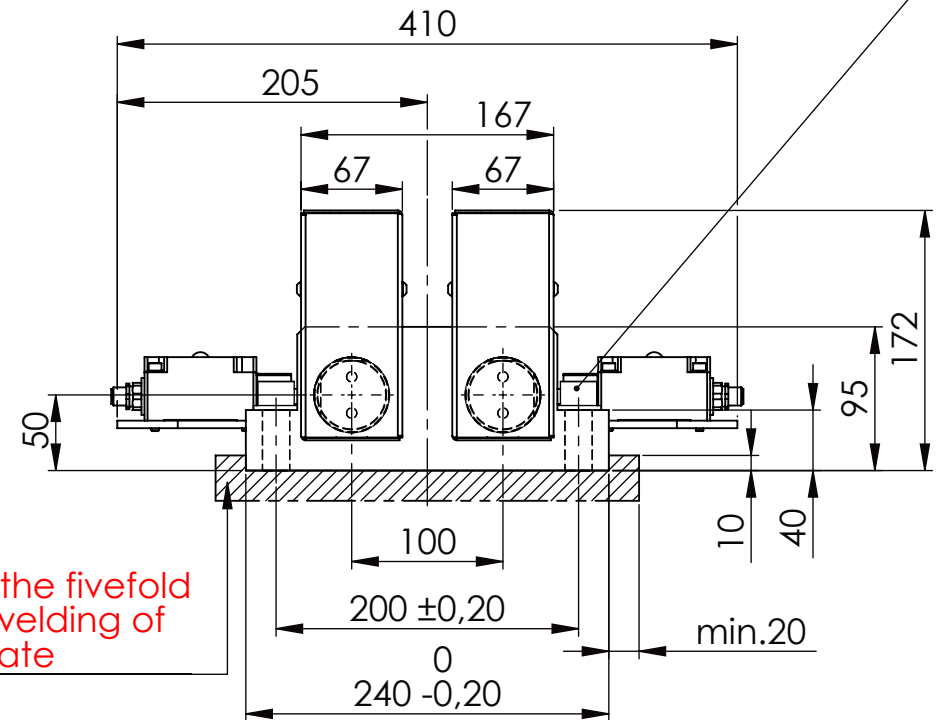
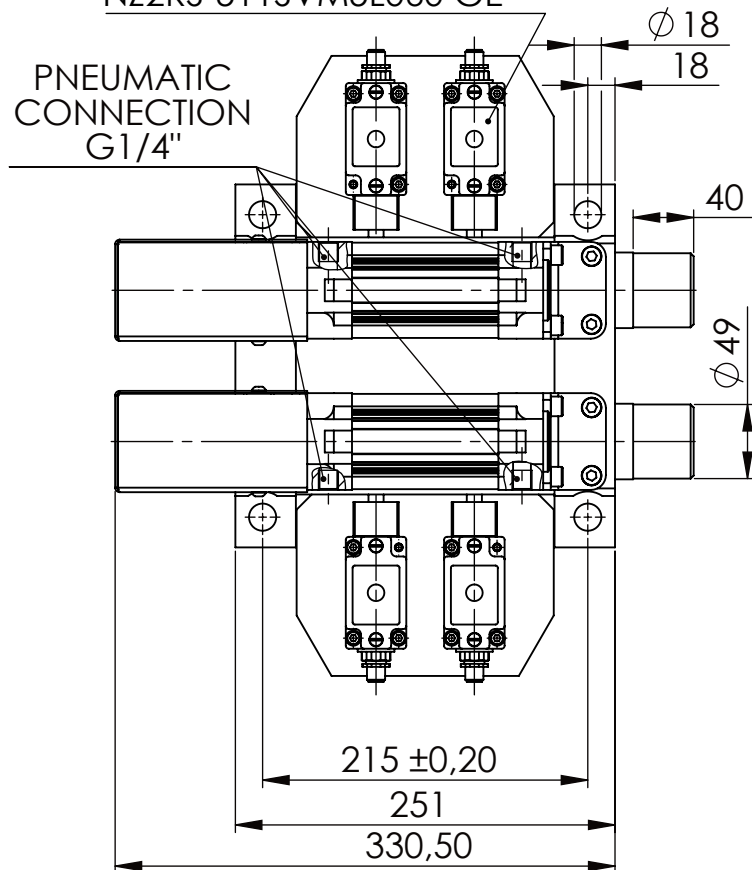


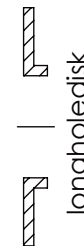
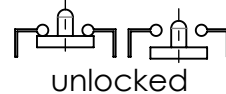
Socket Head Cap Screw DIN 912/DIN EN ISO 4762 - M16x60-8.8, Ma=90Nm,
Washer DIN 125/DIN EN ISO 7089 -A17, retain with Loctite or similar



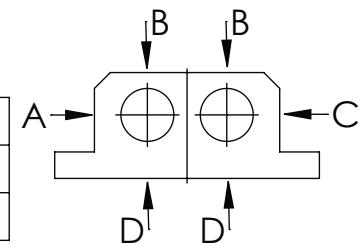
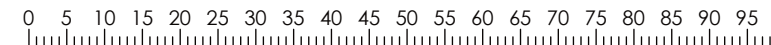
Fa.Euchner, safety switch,
NZ2RS-511SVM5L060 GE



asynchronous
switching



| A | B | C | D |
|-------------------|----------|---------|---|
| F all. | 22.000 N | 6.185 N | |
| under static load | | | |



TYPE OF DOKUMENT: DATA SHEET

WEIGHT [KG]: 31.45

PROJEKTION

SAFETY NOTE
DIN ISO 16016:2007-12

Buhl Maschinenbau e.K.
Carl-Zeiss-Str. 2
71065 Sindelfingen

| | Date | Name |
|-------|----------|------------|
| DRAW. | 23.06.17 | G.Velleuer |
| APP. | 23.06.17 | W.Buhl |

DESIGNATION

SAFETY LOCKING

ADDITIONAL DESIGNATION

SA 50PT-2S

DRAWING-NO.:

05-SA 50 PT-2S 01-03M12

SHEET-FORMAT

DINA4

SCALE

1:5

REV.

0

GENERAL TOLERANCE
DIN ISO 2768 m-K

| FROM | 6 | 30 | 120 | 400 | 1000 | 2000 |
|-------|-----|-----|-----|-----|------|------|
| TO | 6 | 30 | 120 | 400 | 1000 | 2000 |
| TOL.± | 0.1 | 0.2 | 0.3 | 0.5 | 0.8 | 1.2 |
| | 0.2 | 0.3 | 0.5 | 0.8 | 1.2 | 2.0 |

