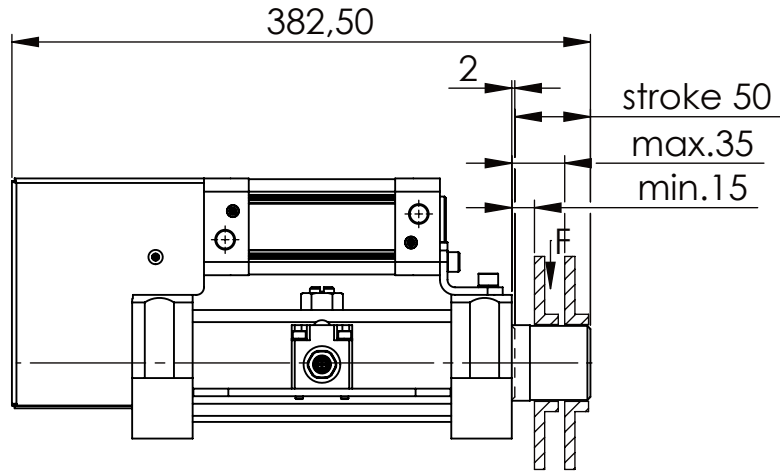
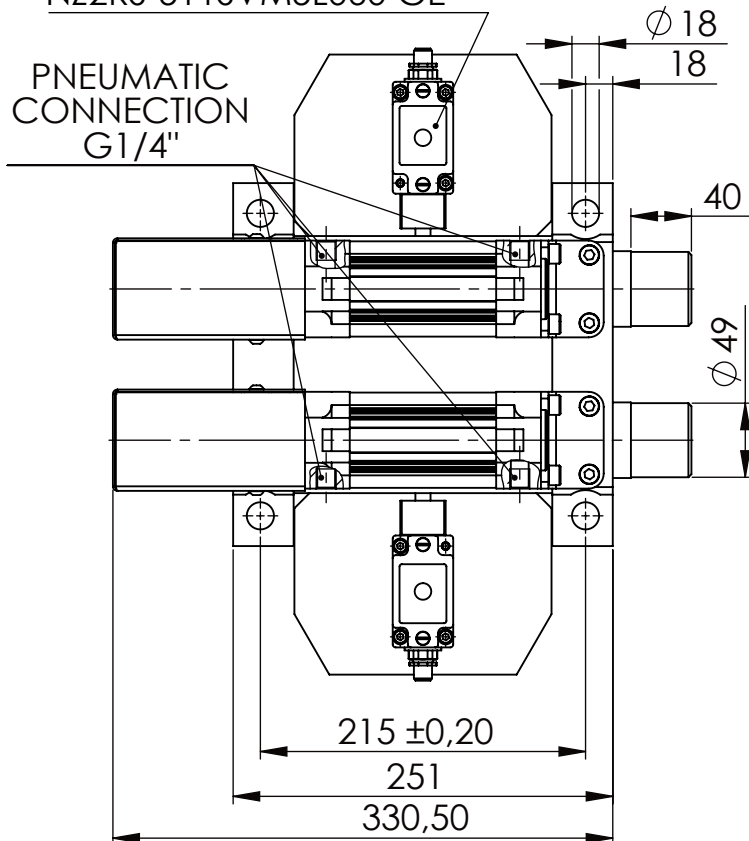


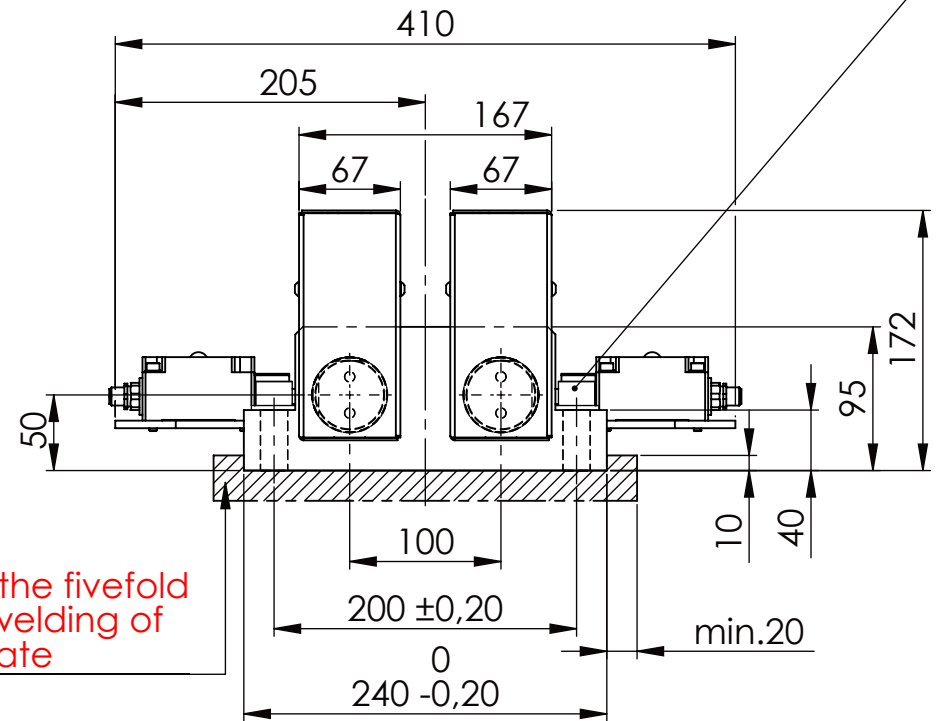
Socket Head Cap Screw DIN 912/DIN EN ISO 4762 - M16x60-8.8, Ma=90Nm,
Washer DIN 125/DIN EN ISO 7089 -A17, retain with Loctite or similar



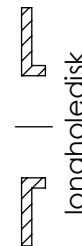
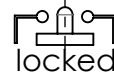
Fa.Euchner, safety switch,
NZ2RS-511SVM5L060 GE



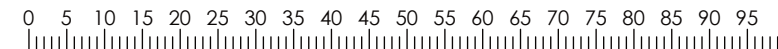
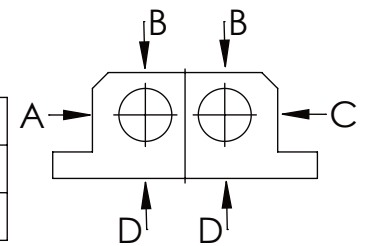
please observe the fivefold
security during welding of
the Retaining plate



safety locking
with one
switch/bold



A B C	D
F all. 22.000 N	6.185 N
under static load	



TYPE OF DOKUMENT: DATA SHEET

WEIGHT [KG]: 30.74

PROJEKTION

SAFETY NOTE DIN ISO 16016:2007-12		Date	Name
Buhl Maschinenbau e.K. Carl-Zeiss-Str. 2 71065 Sindelfingen		DRAW. 19.06.17	G.Velleuer
GENERAL TOLERANCE DIN ISO 2768 m-K		APP. 19.06.17	W.Buhl
FROM	6 30 120 400 1000 2000	Buhl Maschinenbau e.K. Sindelfingen	
TO	6 30 120 400 1000 2000 4000		
TOL.±	0.1 0.2 0.3 0.5 0.8 1.2 2.0		

BUHL

DESIGNATION	SHEET-FORMAT DINA4
SAFETY LOCKING	SCALE 1:5
ADDITIONAL DESIGNATION SA 50PT-1S	REV. 0
DRAWING-NO.: 05-SA 50 PT-1S 01-05M12	