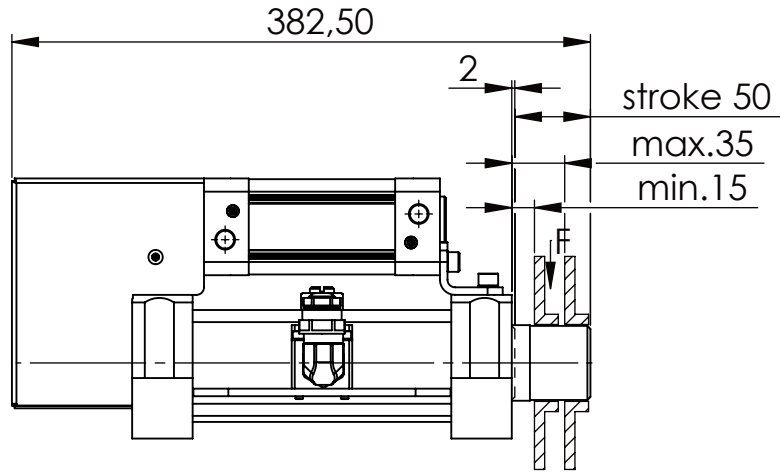
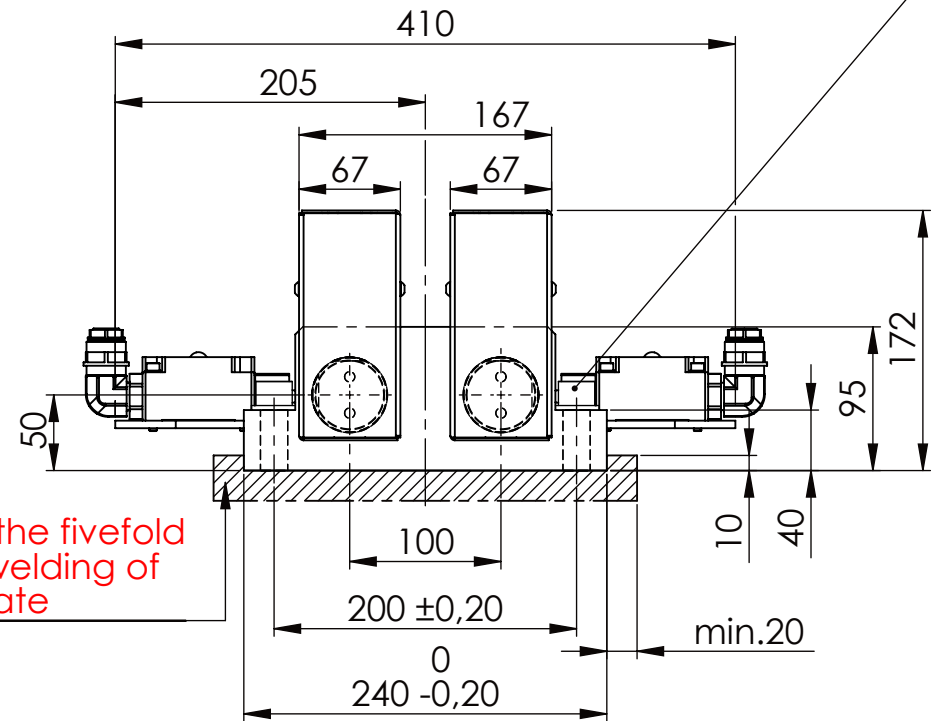
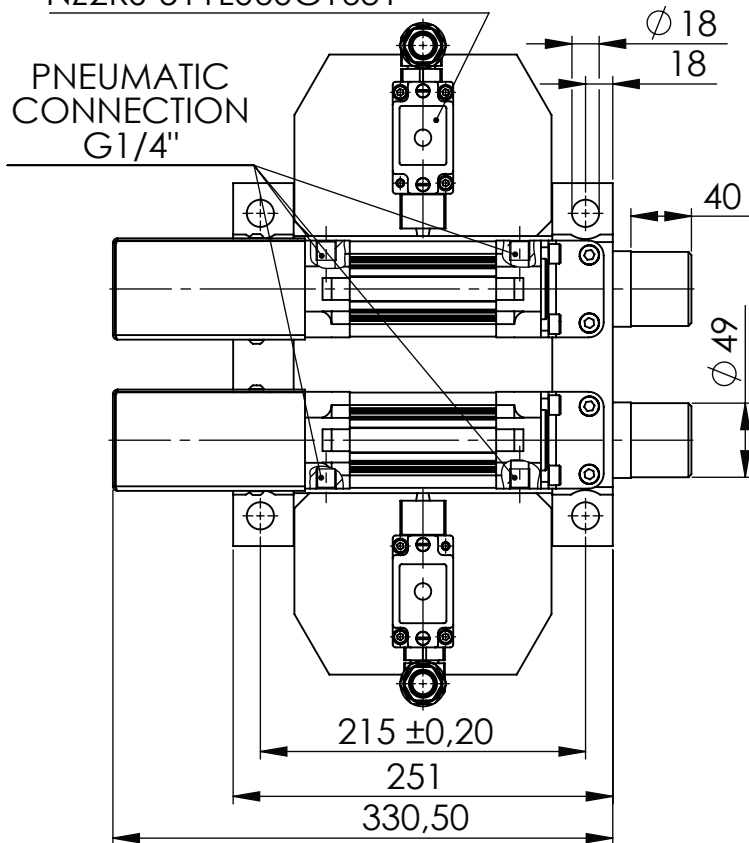


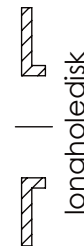
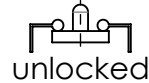
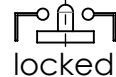
Socket Head Cap Screw DIN 912/DIN EN ISO 4762 - M16x60-8.8, Ma=90Nm,  
Washer DIN 125/DIN EN ISO 7089 -A17, retain with Loctite or similar



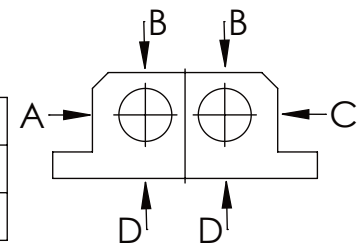
Fa.Euchner, safety switch,  
NZ2RS-511L060C1631



safety locking  
with one  
switch/bold



A B C	D
F all. 22.000 N	6.185 N
under static load	



TYPE OF DOKUMENT: DATA SHEET

WEIGHT [KG]: 30.74

PROJEKTION

SAFETY NOTE							
DIN ISO 16016:2007-12							
Buhl Maschinenbau e.K.							
Carl-Zeiss-Str. 2							
71065 Sindelfingen							
GENERAL TOLERANCE							
DIN ISO 2768 m-K							
FROM	6	30	120	400	1000	2000	
TO	6	30	120	400	1000	2000	4000
TOL.±	0.1	0.2	0.3	0.5	0.8	1.2	2.0

Buhl Maschinenbau e.K.  
Sindelfingen

**BUHL**

DESIGNATION

SAFETY LOCKING

ADDITIONAL DESIGNATION

SA 50PT-1S

DRAWING-NO.:

05-SA 50 PT-1S 01-03

SHEET-  
FORMAT  
DINA4

SCALE  
1:5

REV.  
0