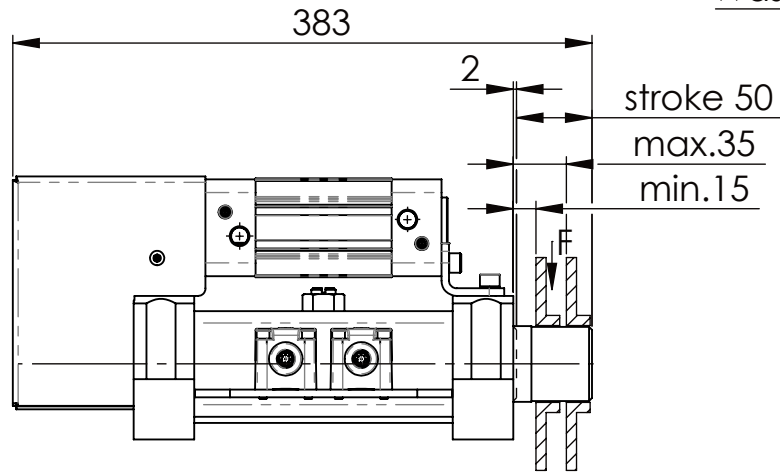
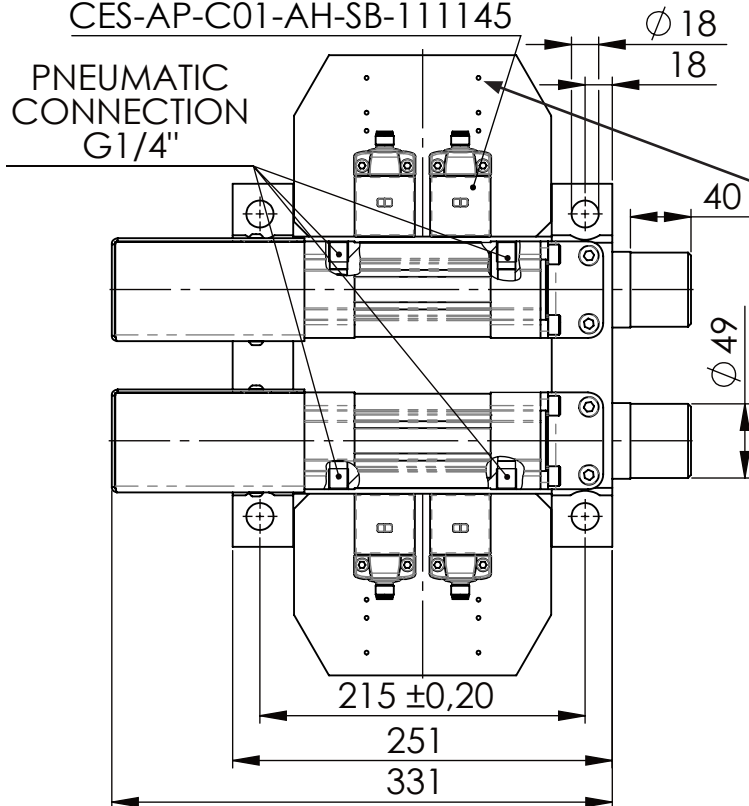


Socket Head Cap Screw DIN 912/DIN EN ISO 4762 - M16x60-8.8, Ma=90Nm,
Washer DIN 125/DIN EN ISO 7089 -A17, retain with Loctite or similar



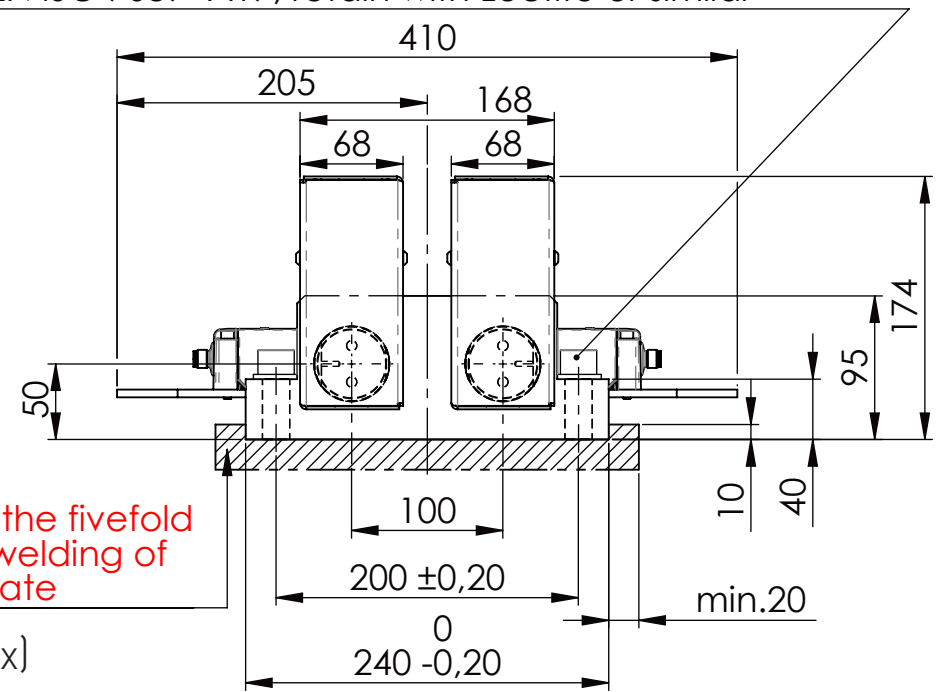
Fa. Euchner, safety switch,
CES-AP-C01-AH-SB-111145

PNEUMATIC
CONNECTION
G1/4"

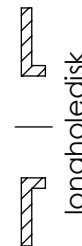
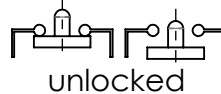


please observe the fivefold
security during welding of
the Retaining plate

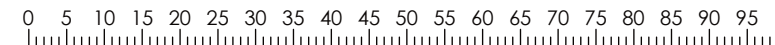
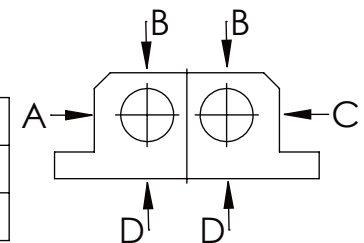
Holes Ø 2,6 (each 3 x)
f. data plate



asynchronous
switching



A B C	D
F all. 22.000 N	6.185 N
under static load	



To control the safety locking out,
use a 5/2 way valve.

TYPE OF DOKUMENT: DATA SHEET

WEIGHT [KG]: 30.64

PROJEKTION

SAFETY NOTE
DIN ISO 16016:2007-12

Date Name

DESIGNATION

SHEET-
FORMAT
DINA4

Buhl Maschinenbau e.K.
Carl-Zeiss-Str. 2
71065 Sindelfingen

DRAW. 06.07.23 G.Velleuer

SAFETY LOCKING

APP. 06.07.23 W.Buhl

ADDITIONAL DESIGNATION

SCALE

GENERAL TOLERANCE
DIN ISO 2768 m-K

BUHL

SA 50PT

1:5

FROM	6	30	120	400	1000	2000
TO	6	30	120	400	1000	2000
TOL.±	0.1	0.2	0.3	0.5	0.8	1.2

DRAWING-NO.:

REV.

05 SA50PT 03-05 U

1