

Technical drawing of a mechanical assembly, likely a pump or motor component, showing a side view. The drawing includes the following dimensions and labels:

- 330,50**: Overall width dimension.
- 2**: Small dimension, likely a gap or offset.
- Hub 50**: Dimension for the hub.
- max.35**: Maximum dimension for the hub.
- min.15**: Minimum dimension for the hub.
- U-Sche**: Label for the U-shaped component.

251

215 ± 0,20

Ø 18

18

40

Pneumatischer Anschluss G1/4"

Fa. Sich NZ

D S D B C 7

verriegelt

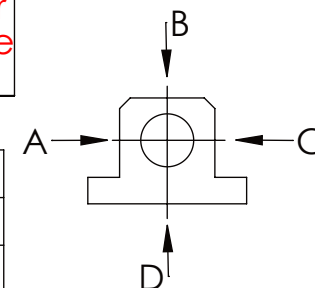
entriegelt

— | —  
Langlochscheibe

Technical drawing showing the front view of the GE 6000-10000 series pressure washer. Dimensions are indicated in millimeters:

- Total width: 180 -0,20
- Main body width: 140 ± 0,20
- Height from base to top handle: 250
- Height from base to trigger gun: 187
- Height from base to motor unit: 110
- Width of motor unit: 109,50
- Distance from left edge to motor unit centerline: 155
- Base thickness: 10
- Minimum clearance from wall: min.20
- Top handle diameter: 40

	A B C	D
F <sub>zul.</sub>	22.000 N	6.185 N
bei stat. Belastung		



BUHU

Revision	0
----------	---