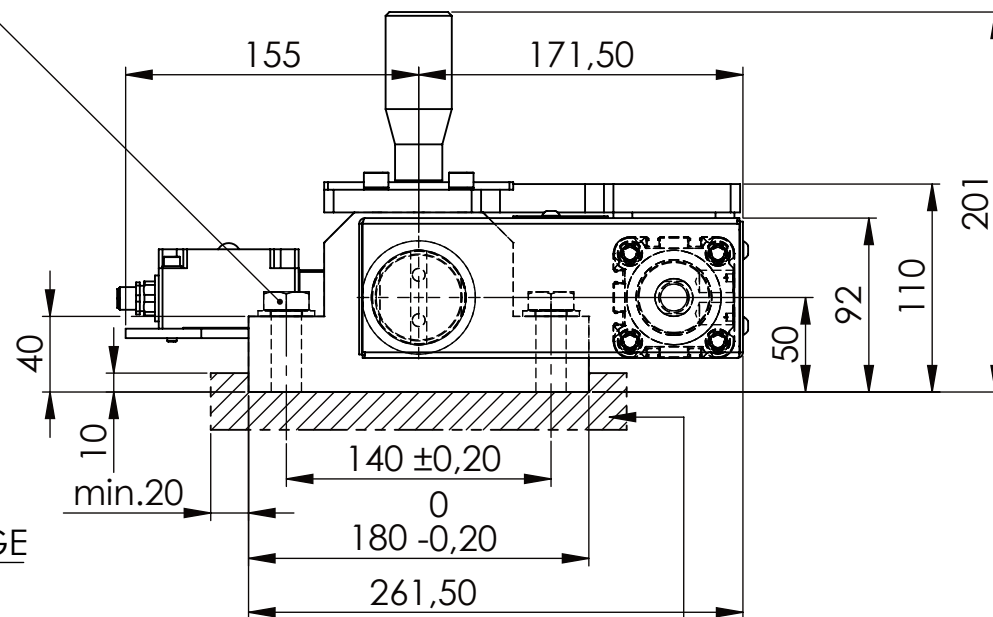
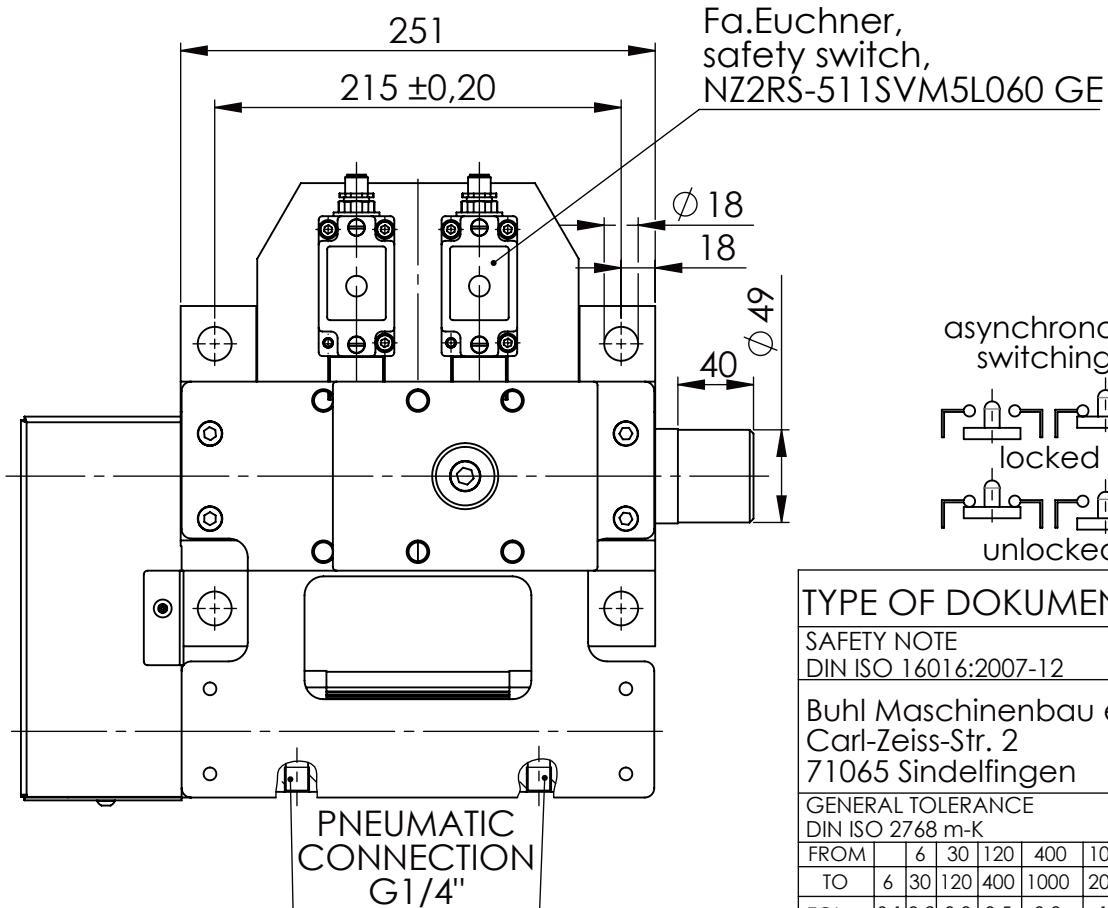


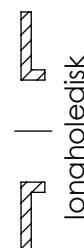
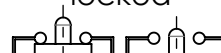
Hexagon Screw DIN 931/DIN EN ISO 4014-M16x60- 8.8,  
Ma=90Nm, Washer DIN 125/DIN EN ISO 7089 -A17,  
retain with Loctite or similar



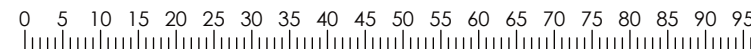
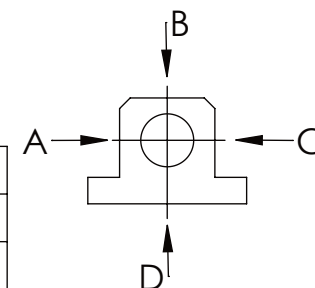
please observe the fivefold  
security during welding of  
the Retaining plate



asynchronous  
switching



	A	B	C	D
F all.	22.000 N			6.185 N
under static load				



TYPE OF DOKUMENT: DATA SHEET

WEIGHT [KG]: 23.19 PROJECTION

SAFETY NOTE  
DIN ISO 16016:2007-12

Buhl Maschinenbau e.K.  
Carl-Zeiss-Str. 2  
71065 Sindelfingen

	Date	Name
DRAW.	23.06.17	G.Velleuer
APP.	23.06.17	W.Buhl

DESIGNATION

SAFETY LOCKING

ADDITIONAL DESIGNATION

SA 50P+H

SHEET-  
FORMAT

DINA4

GENERAL TOLERANCE  
DIN ISO 2768 m-K

FROM	6	30	120	400	1000	2000
TO	6	30	120	400	1000	2000
TOL.±	0.1	0.2	0.3	0.5	0.8	1.2

Buhl Maschinenbau e.K.  
Sindelfingen

**BUHL**

DRAWING-NO.:  
05-SA 50 P+H 02-03M12

SCALE

1:4

REV.

0