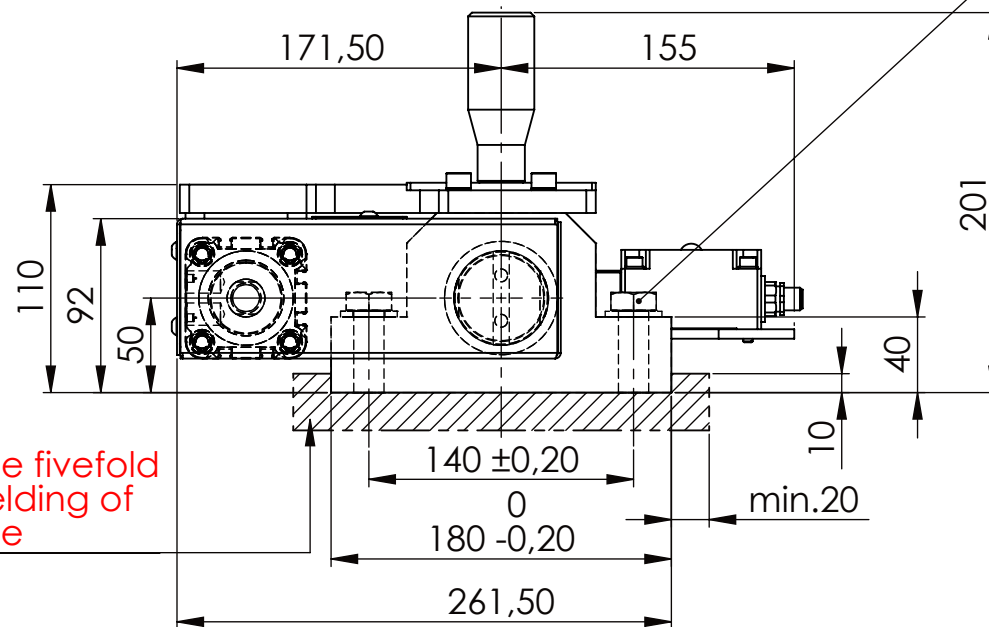
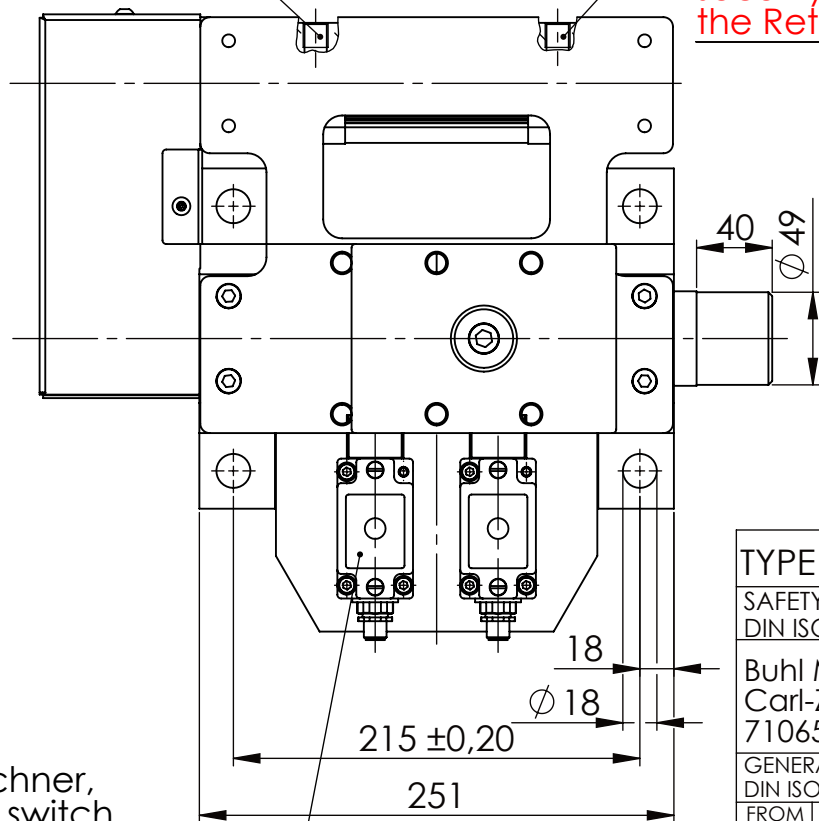


Hexagon Screw DIN 931/DIN EN ISO 4014-M16x60- 8.8, Ma=90Nm,
Washer DIN 125/DIN EN ISO 7089 -A17, retain with Loctite or similar

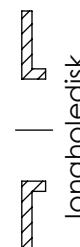


PNEUMATIC
CONNECTION G1/4"

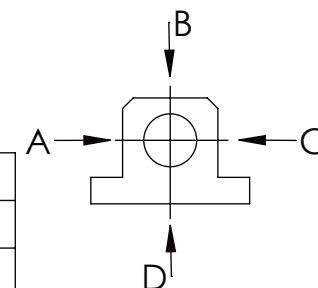
please observe the fivefold
security during welding of
the Retaining plate



asynchronous
switching



	A	B	C	D
F all.	22.000 N			6.185 N
under static load				



Fa.Euchner,
safety switch,
NZ2RS-511SVM5L060 GE

TYPE OF DOKUMENT: DATA SHEET

SAFETY NOTE
DIN ISO 16016:2007-12

Buhl Maschinenbau e.K.
Carl-Zeiss-Str. 2
71065 Sindelfingen

GENERAL TOLERANCE DIN ISO 2768 m-K							
FROM	6	30	120	400	1000	2000	
TO	6	30	120	400	1000	2000	4000
TOL.±	0.1	0.2	0.3	0.5	0.8	1.2	2.0

Buhl Maschinenbau e.K.
Sindelfingen

BUHL

WEIGHT [KG]: 23.19 PROJECTION

DESIGNATION	SHEET- FORMAT
SAFETY LOCKING	DINA4
ADDITIONAL DESIGNATION	SCALE
SA 50P+H	1:4
DRAWING-NO.:	REV.
05-SA 50 P+H 01-03M12	0