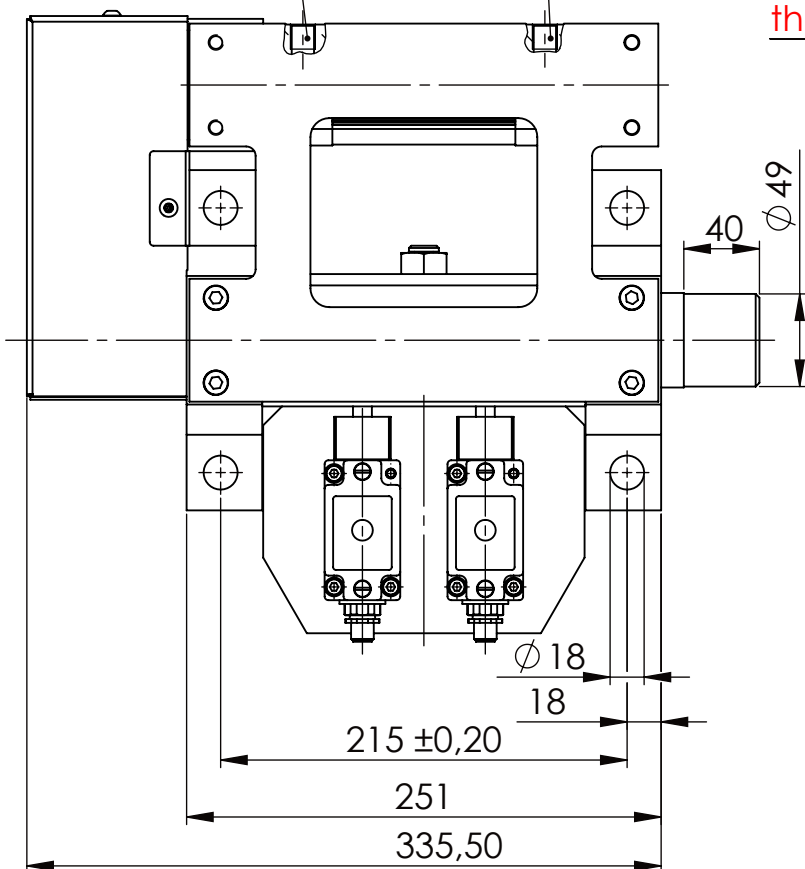
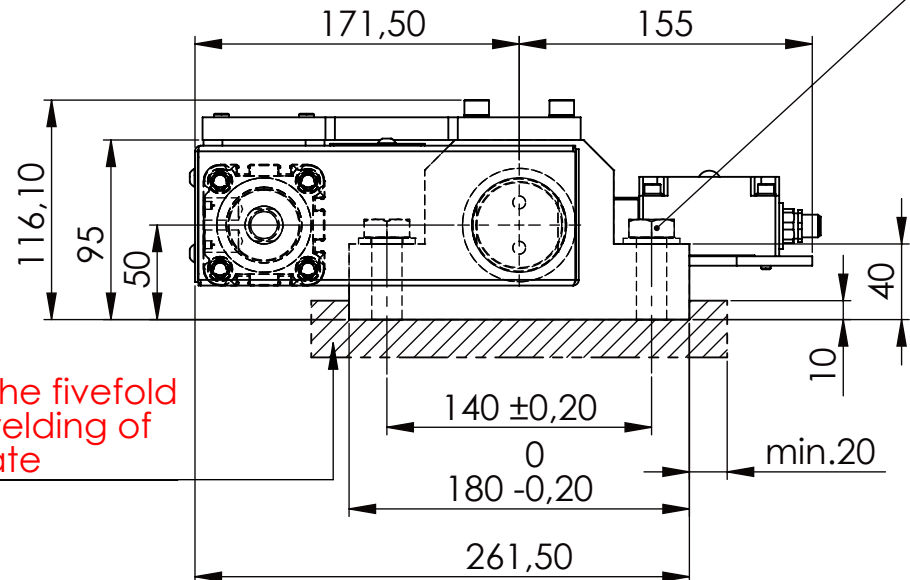


PNEUMATIC
CONNECTION
G1/4"

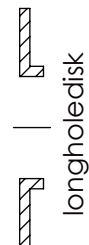


Hexagon Screw DIN 931/DIN EN ISO 4014-M16x60- 8.8, Ma=90Nm,
Washer DIN 125/DIN EN ISO 7089 -A17, retain with Loctite or similar

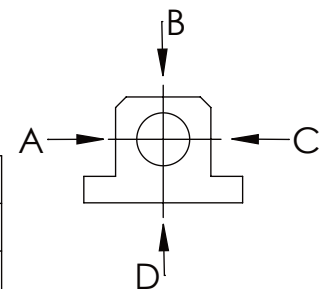


please observe the fivefold
security during welding of
the Retaining plate

asynchronous
switching



	A	B	C	D
F all.	22.000 N			6.185 N
under static load				



TYPE OF DOKUMENT: DATA SHEET

WEIGHT [KG]: 20.74 PROJECTION

SAFETY NOTE
DIN ISO 16016:2007-12

Buhl Maschinenbau e.K.
Carl-Zeiss-Str. 2
71065 Sindelfingen

	Date	Name
DRAW.	23.06.17	G.Velleuer
APP.	23.06.17	W.Buhl

DESIGNATION

SAFETY LOCKING

ADDITIONAL DESIGNATION

SA 50P

DRAWING-NO.:

05-SA 50 P 03-03M12

SHEET-FORMAT

DINA4

SCALE

1:4

REV.

0

GENERAL TOLERANCE
DIN ISO 2768 m-K

FROM	6	30	120	400	1000	2000
TO	6	30	120	400	1000	2000
TOL.±	0.1	0.2	0.3	0.5	0.8	1.2
	0.2	0.3	0.5	0.8	1.2	2.0

