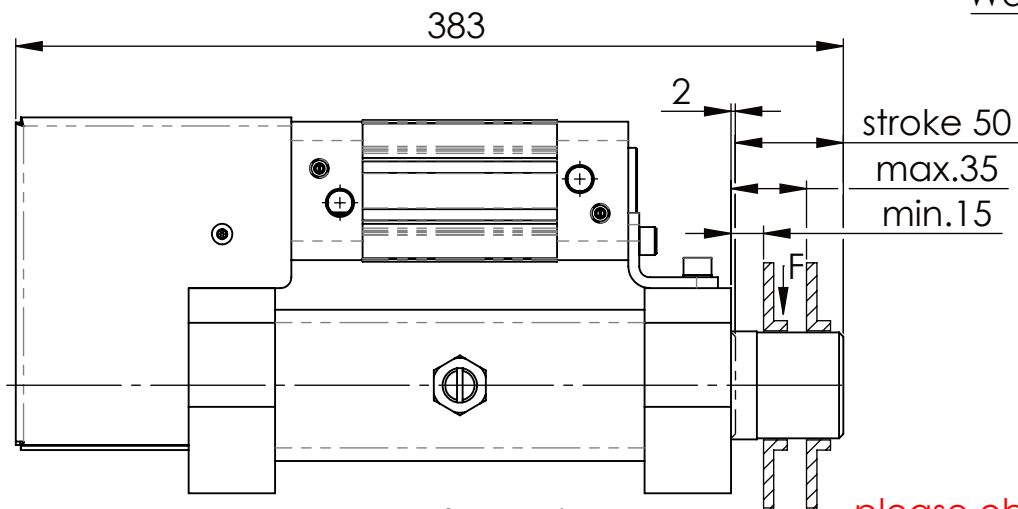


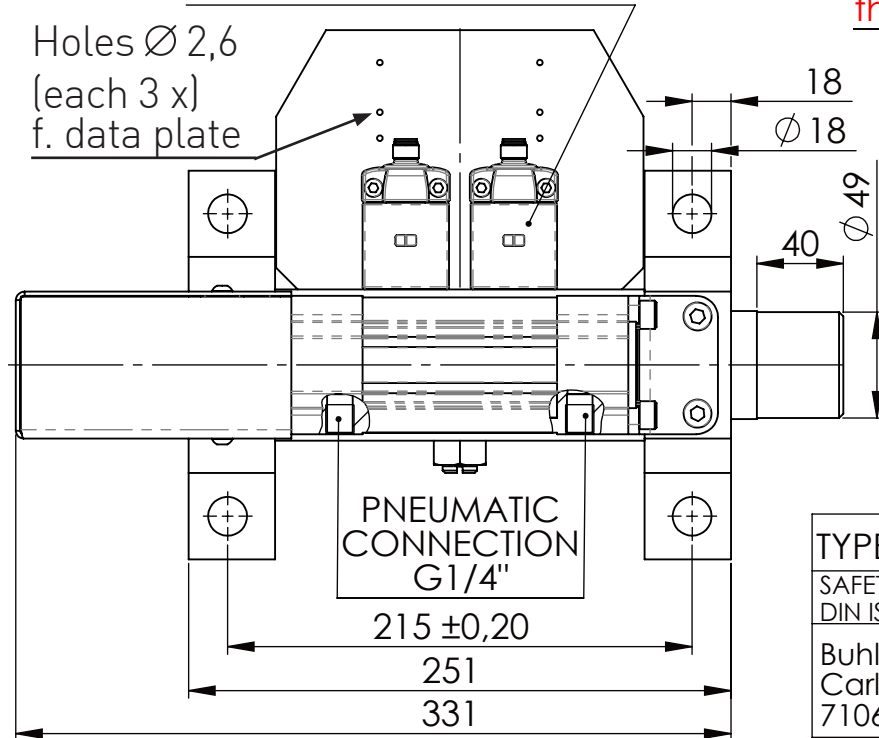
Hexagon Screw DIN 931/DIN EN ISO 4014-M16x60- 8.8, Ma=90Nm,
Washer DIN 125/DIN EN ISO 7089 -A17, retain with Loctite or similar



Fa. Euchner, safety switch,
CES-AP-C01-AH-SB-111145

please observe the fivefold
security during welding of
the Retaining plate

Holes $\varnothing 2,6$
(each 3 x)
f. data plate



asynchronous
switching



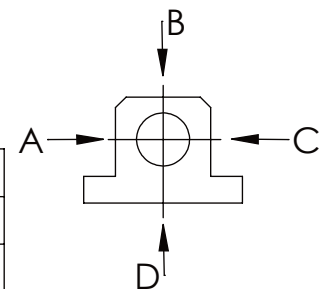
locked



unlocked



	A	B	C	D
F all.	22.000 N	22.000 N	22.000 N	6.185 N
under static load				



To control the safty locking out,
use a 5/2 way valve.

TYPE OF DOKUMENT: DATA SHEET

WEIGHT [KG]: 16.81

PROJECTION

SAFETY NOTE

DIN ISO 16016:2007-12

Buhl Maschinenbau e.K.
Carl-Zeiss-Str. 2
71065 Sindelfingen

DRAW.

06.07.23

G.Velleuer

APP.

06.07.23

W.Buhl

GENERAL TOLERANCE

DIN ISO 2768 m-K

FROM	6	30	120	400	1000	2000
TO	6	30	120	400	1000	2000
TOL.±	0.1	0.2	0.3	0.5	0.8	1.2

BUHL

BUHL

DESIGNATION

SAFETY LOCKING

ADDITIONAL DESIGNATION

SA 50P

DRAWING-NO.:

05 SA50P 02-05 U

SHEET-FORMAT

DINA4

SCALE

1:3.5

REV.

1