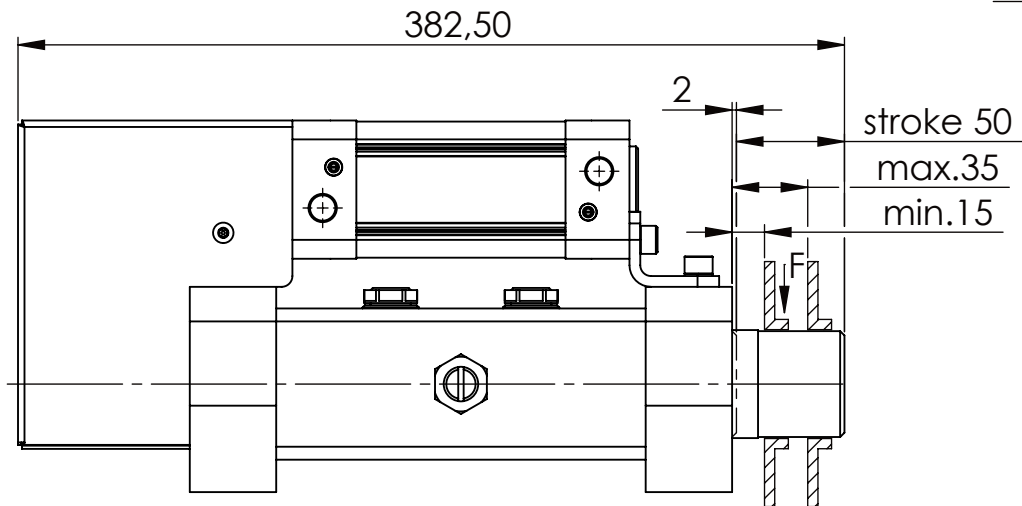
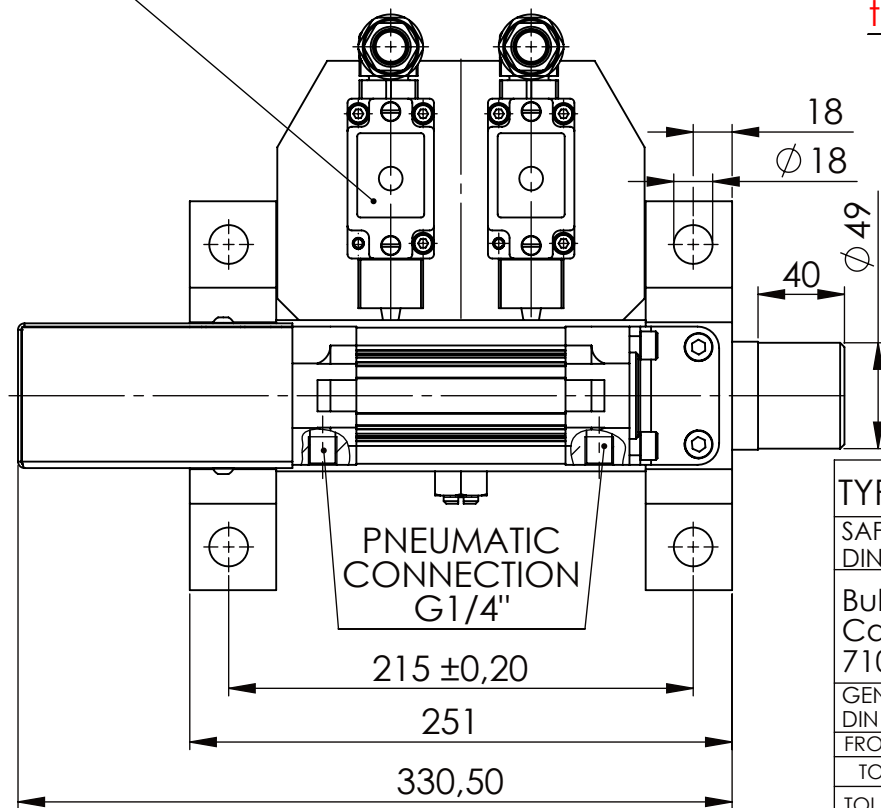


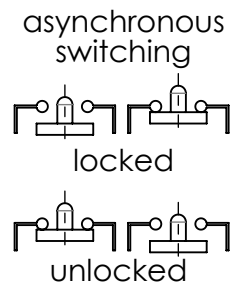
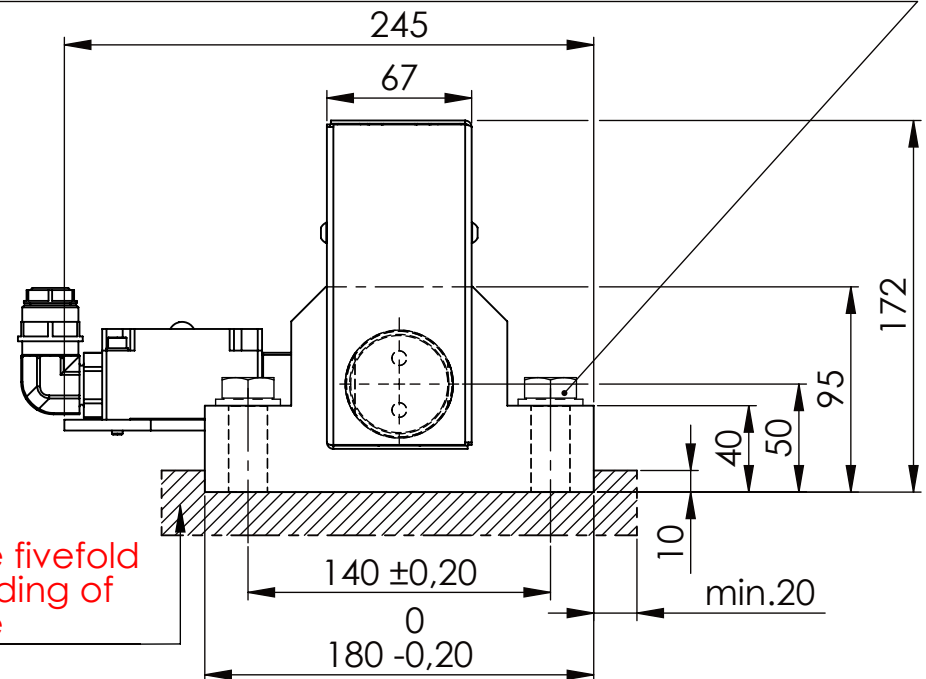
Hexagon Screw DIN 931/DIN EN ISO 4014-M16x60- 8.8, Ma=90Nm,
Washer DIN 125/DIN EN ISO 7089 -A17, retain with Loctite or similar



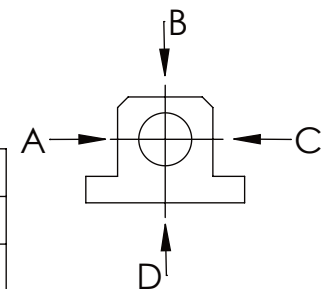
Fa.Euchner, safety switch,
NZ2RS-511L060C1631



please observe the fivefold security during welding of the Retaining plate



	A B C	D
F all.	22.000 N	6.185 N
under static load		



TYPE OF DOKUMENT: DATA SHEET

SAFETY NOTE
DIN ISO 16016:2007-12


Buhl Maschinenbau e.K.
Carl-Zeiss-Str. 2
71065 Sindelfingen

GENERAL TOLERANCE
DIN ISO 2768 m-K

FROM		6	30	120	400	1000	2000
TO	6	30	120	400	1000	2000	4000
TOL.±	0.1	0.2	0.3	0.5	0.8	1.2	2.0

Buhl Maschinenbau e.K.
Sindelfingen

BUHL

WEIGHT [KG]: 16.69 PROJECTION 

DESIGNATION

SAFETY LOCKING

ADDITIONAL DESIGNATION

SA 50P

DRAWING-NO.:

05-SA 50 P 02-03

SHEET-
FORMAT
DINA4

SCALE
1:3.5

REV.
0