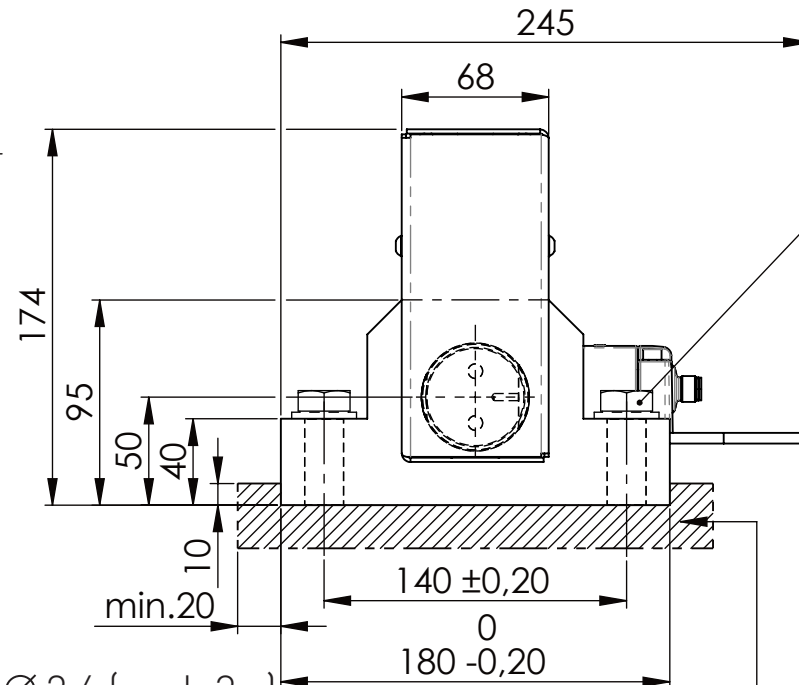
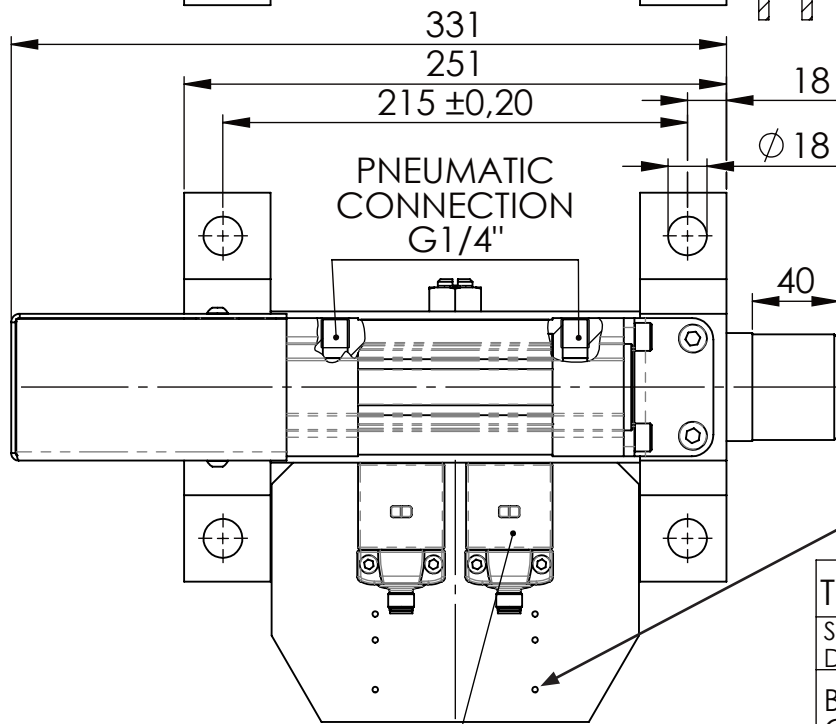
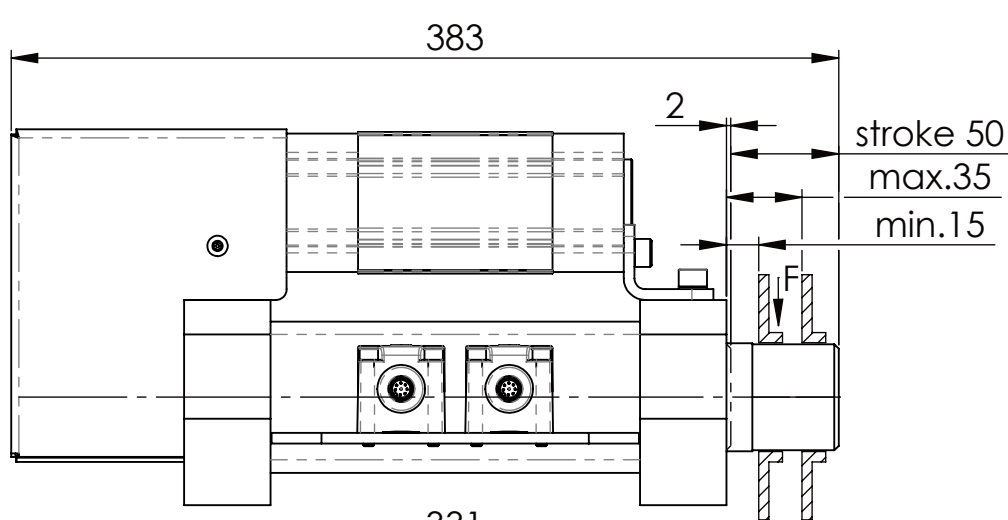
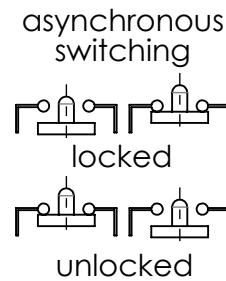


Hexagon Screw DIN 931/DIN EN ISO 4014-M16x60- 8.8, Ma=90Nm,  
Washer DIN 125/DIN EN ISO 7089 -A17, retain with Loctite or similar

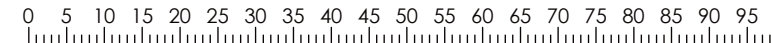
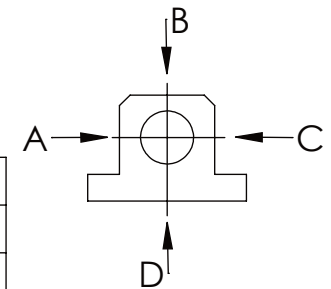


Holes Ø 2,6 (each 3 x)  
f. data plate



please observe the fivefold security during welding of the Retaining plate

	A B C	D
F all.	22.000 N	6.185 N
under static load		



Fa. Euchner, safety switch,  
CES-AP-C01-AH-SB-111145

To control the safety locking out,  
use a 5/2 way valve.

TYPE OF DOKUMENT: DATA SHEET

SAFETY NOTE

DIN ISO 16016:2007-12

Buhl Maschinenbau e.K.  
Carl-Zeiss-Str. 2  
71065 Sindelfingen

GENERAL TOLERANCE  
DIN ISO 2768 m-K

FROM	6	30	120	400	1000	2000
TO	6	30	120	400	1000	2000
TOL.±	0.1	0.2	0.3	0.5	0.8	1.2

Date Name  
06.07.23 G.Velleuer  
APP. 06.07.23 W.Buhl

**BUHL**

WEIGHT [KG]: 16.81

PROJECTION

DESIGNATION

SAFETY LOCKING

ADDITIONAL DESIGNATION

SA 50P

DRAWING-NO.:

05 SA50P 01-05 U

SHEET-FORMAT  
DINA4

SCALE  
1:3.5

REV.  
1