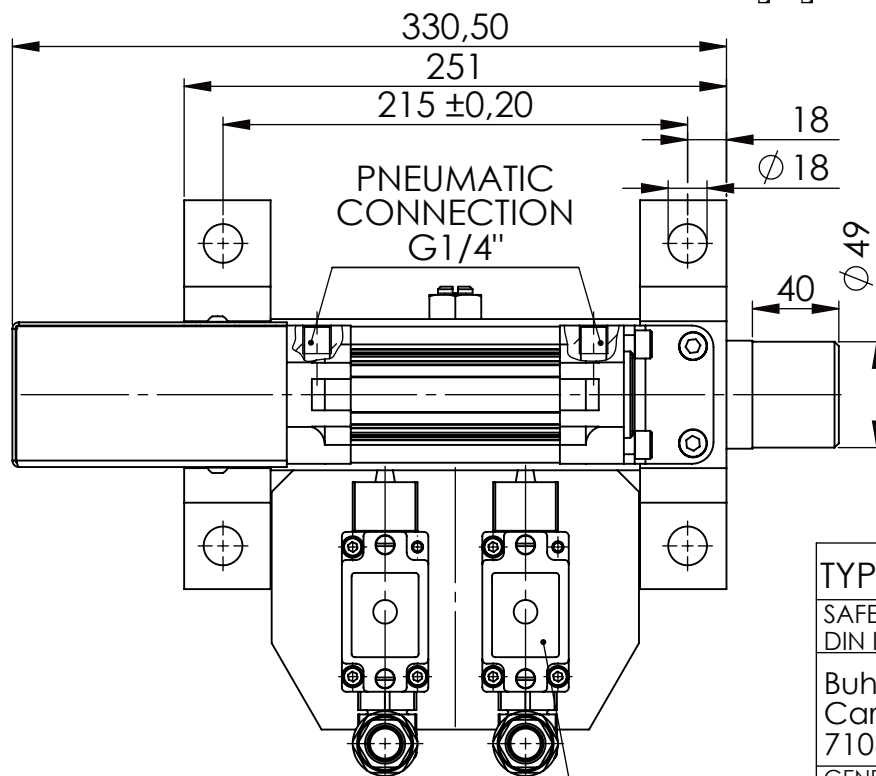
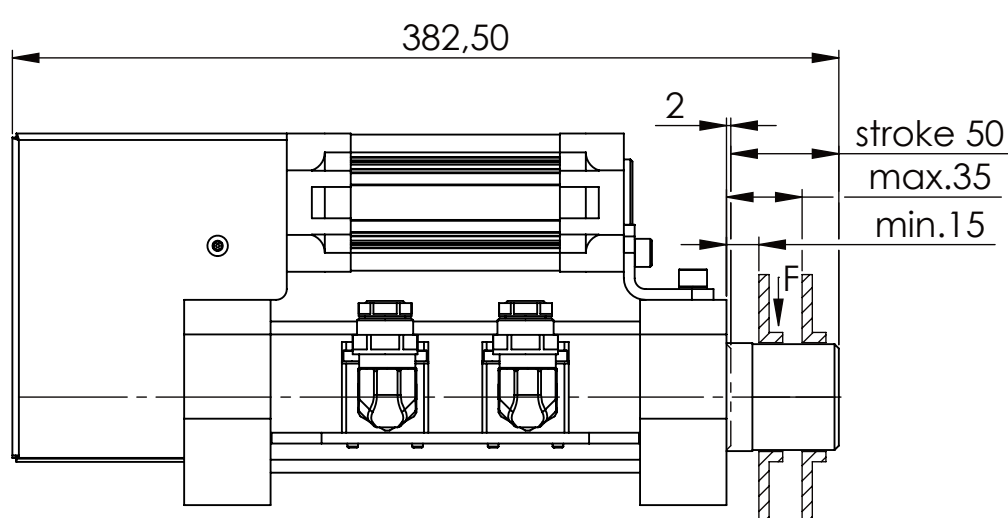
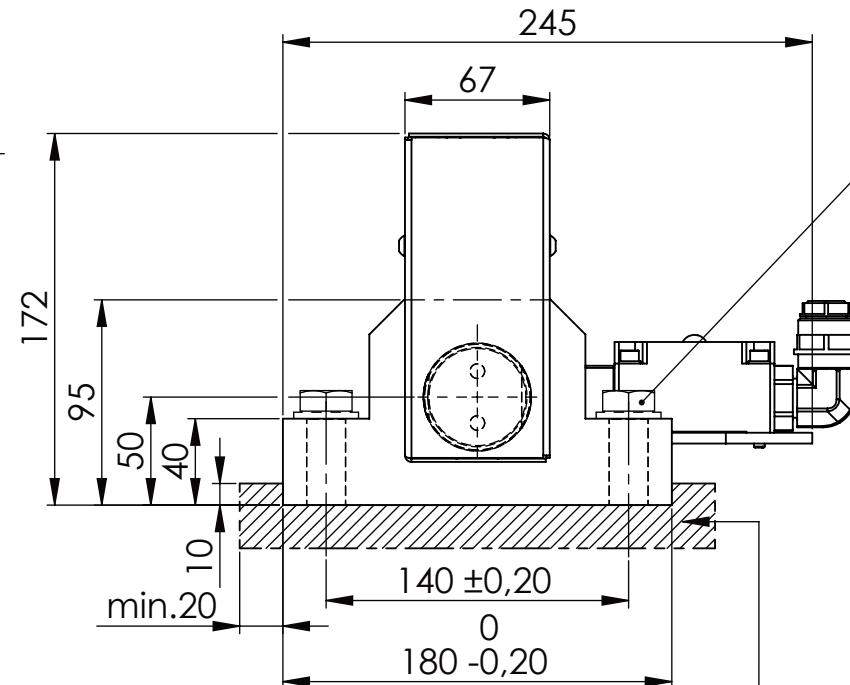


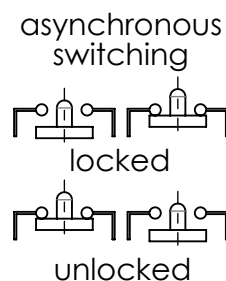
Hexagon Screw DIN 931/DIN EN ISO 4014-M16x60- 8.8, Ma=90Nm,
Washer DIN 125/DIN EN ISO 7089 -A17, retain with Loctite or similar



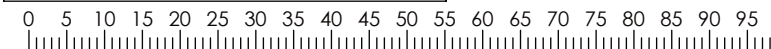
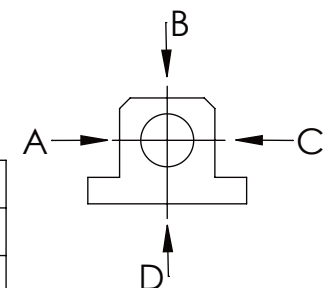
Fa.Euchner, safety switch,
NZ2RS-511L060C1631



please observe the fivefold
security during welding of
the Retaining plate



	A B C	D
F all.	22.000 N	6.185 N
under static load		



TYPE OF DOKUMENT: DATA SHEET

WEIGHT [KG]: 16.69 PROJECTION:

SAFETY NOTE
DIN ISO 16016:2007-12

Buhl Maschinenbau e.K.
Carl-Zeiss-Str. 2
71065 Sindelfingen

	Date	Name
DRAW.	14.06.17	G.Velleuer
APP.	14.06.17	W.Buhl

DESIGNATION	SHEET-FORMAT
SAFETY LOCKING	DINA4
ADDITIONAL DESIGNATION	SCALE
SA 50P	1:3.5
DRAWING-NO.:	REV.
05-SA 50 P 01-05	0

GENERAL TOLERANCE DIN ISO 2768 m-K						
FROM	6	30	120	400	1000	2000
TO	6	30	120	400	1000	2000
TOL.±	0.1	0.2	0.3	0.5	0.8	1.2
	0.2	0.3	0.5	0.8	1.2	2.0

Buhl Maschinenbau e.K.
Sindelfingen

BUHL