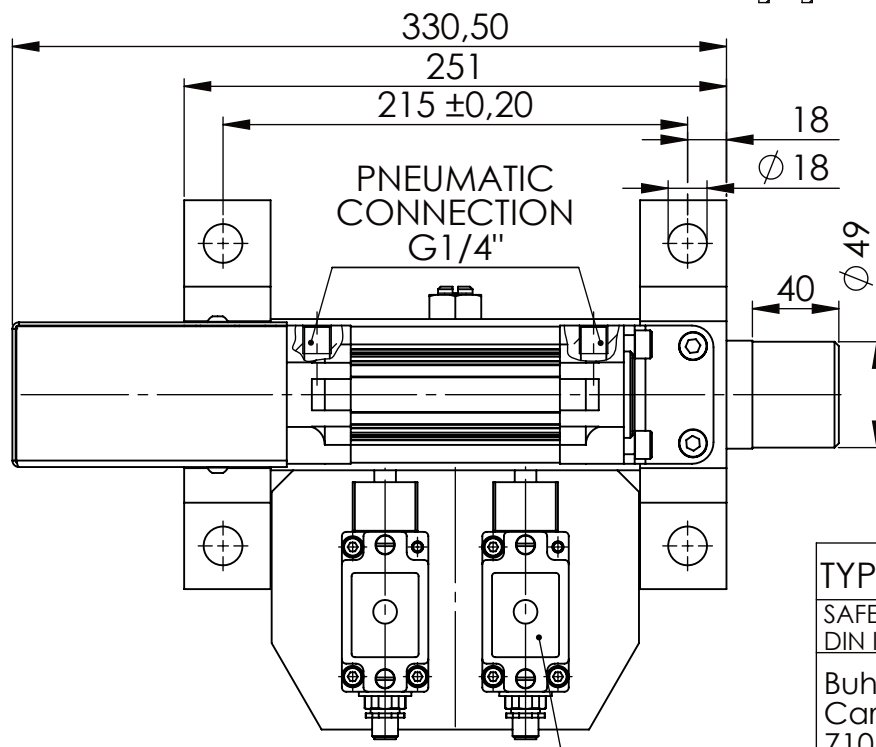
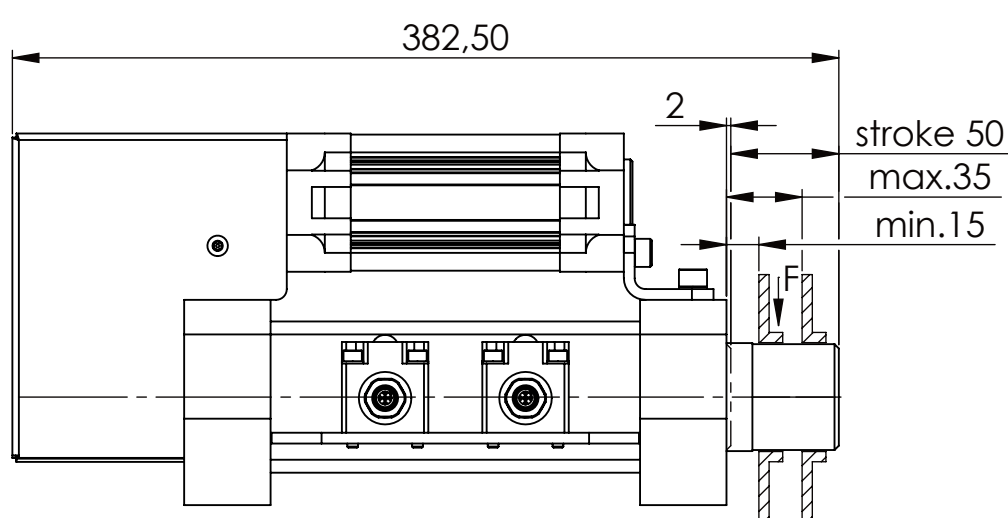
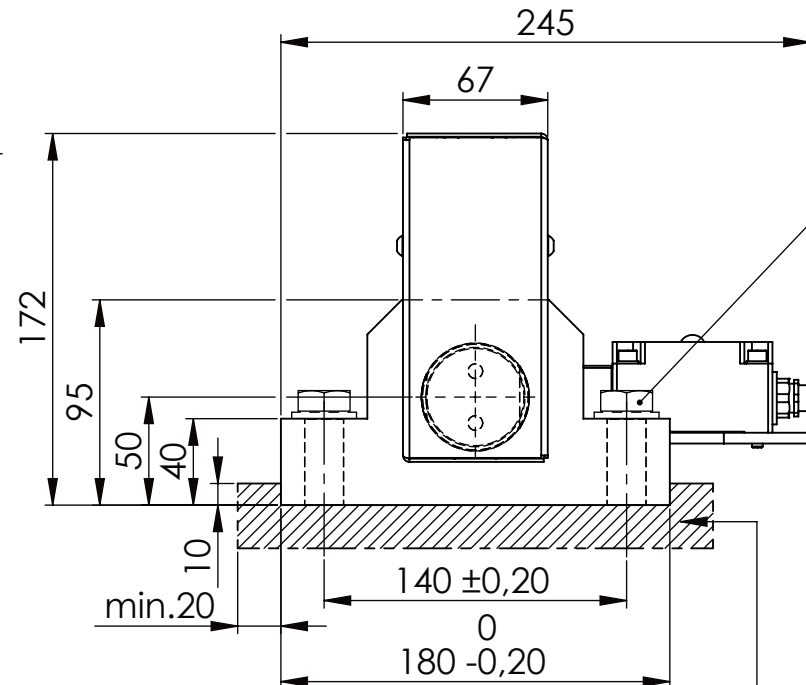


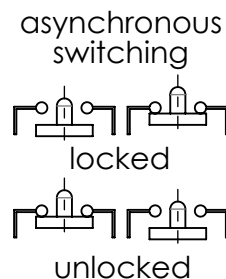
Hexagon Screw DIN 931/DIN EN ISO 4014-M16x60- 8.8, Ma=90Nm,  
Washer DIN 125/DIN EN ISO 7089 -A17, retain with Loctite or similar



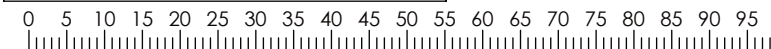
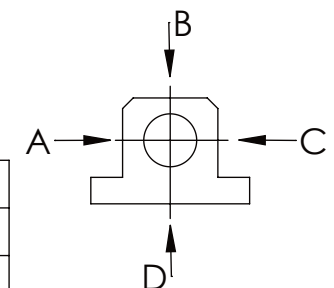
Fa.Euchner, safety switch,  
NZ2RS-511SVM5L060 GE



please observe the fivefold  
security during welding of  
the Retaining plate



	A	B	C	D
F all.	22.000 N	6.185 N		
under static load				



TYPE OF DOKUMENT: DATA SHEET

WEIGHT [KG]: 16.69 PROJECTION:

SAFETY NOTE  
DIN ISO 16016:2007-12

Buhl Maschinenbau e.K.  
Carl-Zeiss-Str. 2  
71065 Sindelfingen

	Date	Name
DRAW.	23.06.17	G.Velleuer
APP.	23.06.17	W.Buhl

DESIGNATION	SHEET-FORMAT
SAFETY LOCKING	DINA4
ADDITIONAL DESIGNATION	SCALE
SA 50P	1:3.5
DRAWING-NO.:	REV.
05-SA 50 P 01-03M12	0

GENERAL TOLERANCE DIN ISO 2768 m-K							
FROM	6	30	120	400	1000	2000	
TO	6	30	120	400	1000	2000	4000
TOL.±	0.1	0.2	0.3	0.5	0.8	1.2	2.0

Buhl Maschinenbau e.K.  
Sindelfingen

**BUHL**