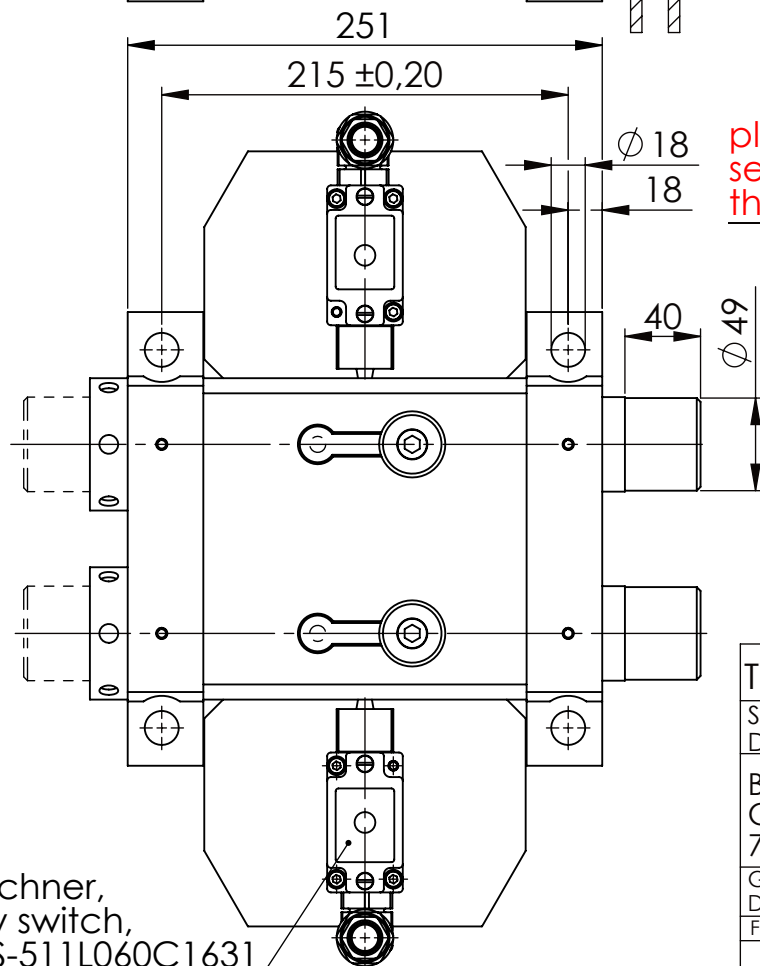
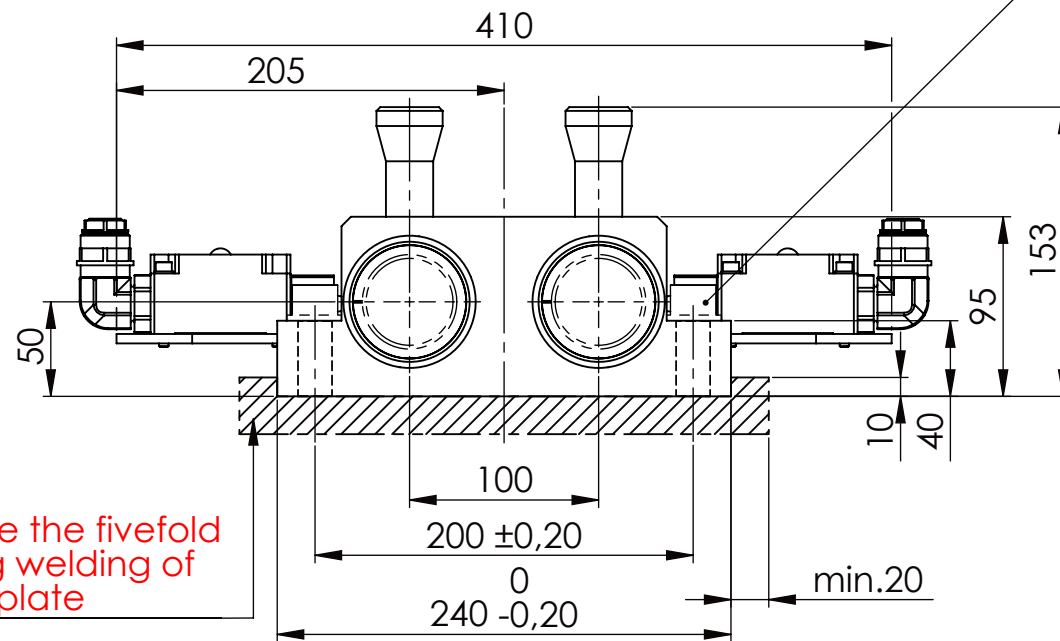
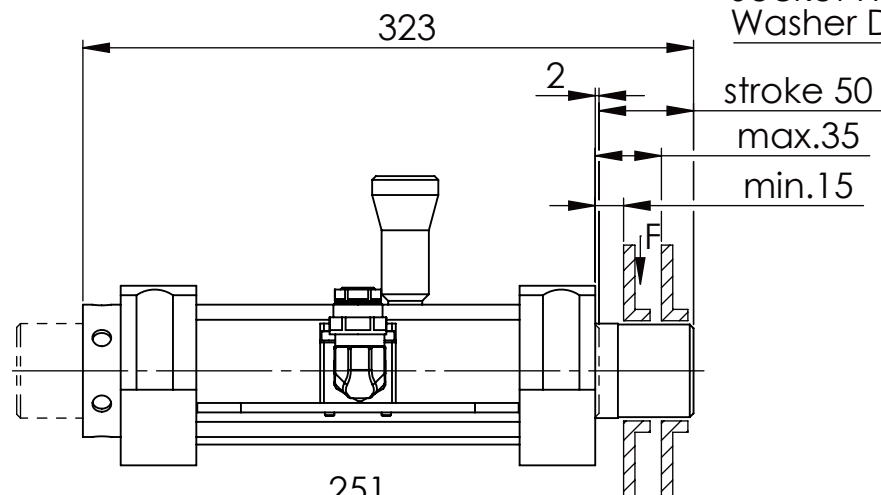
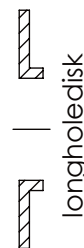
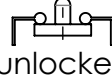
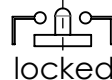


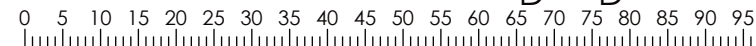
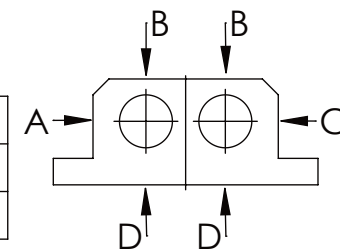
Socket Head Cap Screw DIN 912/DIN EN ISO 4762 - M16x60-8.8, Ma=90Nm,
Washer DIN 125/DIN EN ISO 7089 -A17, retain with Loctite or similar



safety locking
with one
switch/bold



| | A | B | C | D |
|-------------------|----------|---|---|---------|
| F all. | 22.000 N | | | 6.185 N |
| under static load | | | | |



Fa.Euchner,
safety switch,
NZ2RS-511L060C1631

TYPE OF DOKUMENT: DATA SHEET

WEIGHT [KG]: 24.18

PROJECTION

SAFETY NOTE
DIN ISO 16016:2007-12
Buhl Maschinenbau e.K.
Carl-Zeiss-Str. 2
71065 Sindelfingen

| | | |
|-------|----------|------------|
| | Date | Name |
| DRAW. | 19.06.17 | G.Velleuer |
| APP. | 19.06.17 | W.Buhl |

DESIGNATION
SAFETY LOCKING
ADDITIONAL DESIGNATION
SA 50HT-1S

SHEET-FORMAT
DINA4
SCALE
1:4

| | | | | | | | |
|---------------------------------------|-----|-----|-----|-----|------|------|------|
| GENERAL TOLERANCE DIN ISO 2768 m-K | | | | | | | |
| FROM | 6 | 30 | 120 | 400 | 1000 | 2000 | |
| TO | 6 | 30 | 120 | 400 | 1000 | 2000 | 4000 |
| TOL.± | 0.1 | 0.2 | 0.3 | 0.5 | 0.8 | 1.2 | 2.0 |

Buhl Maschinenbau e.K.
Sindelfingen

BUHL

DRAWING-NO.:
05-SA 50 HT-1S 01-03

REV.
0