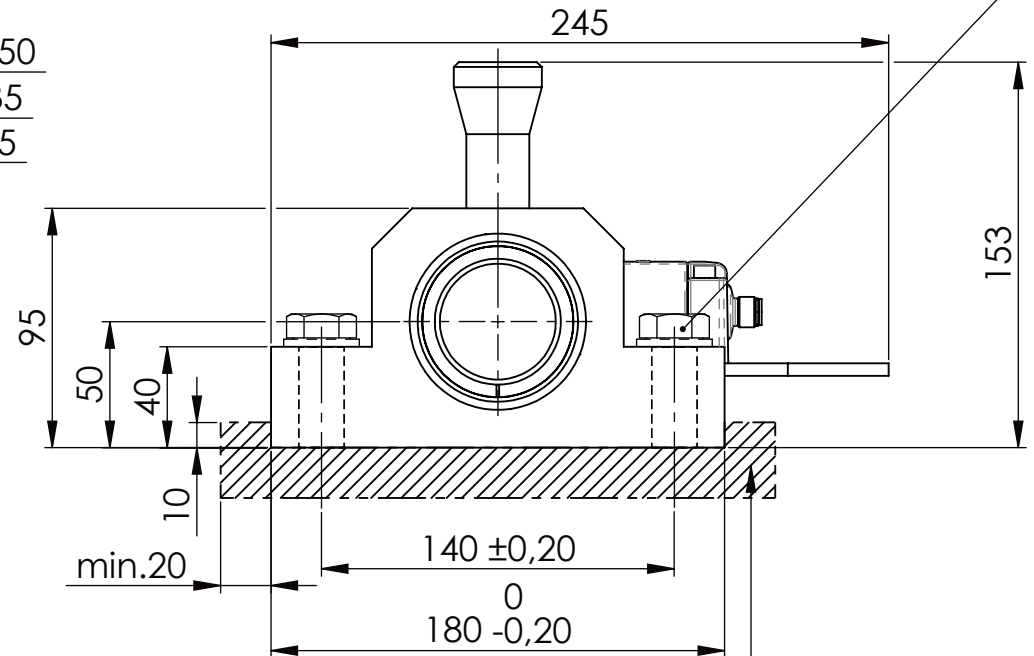
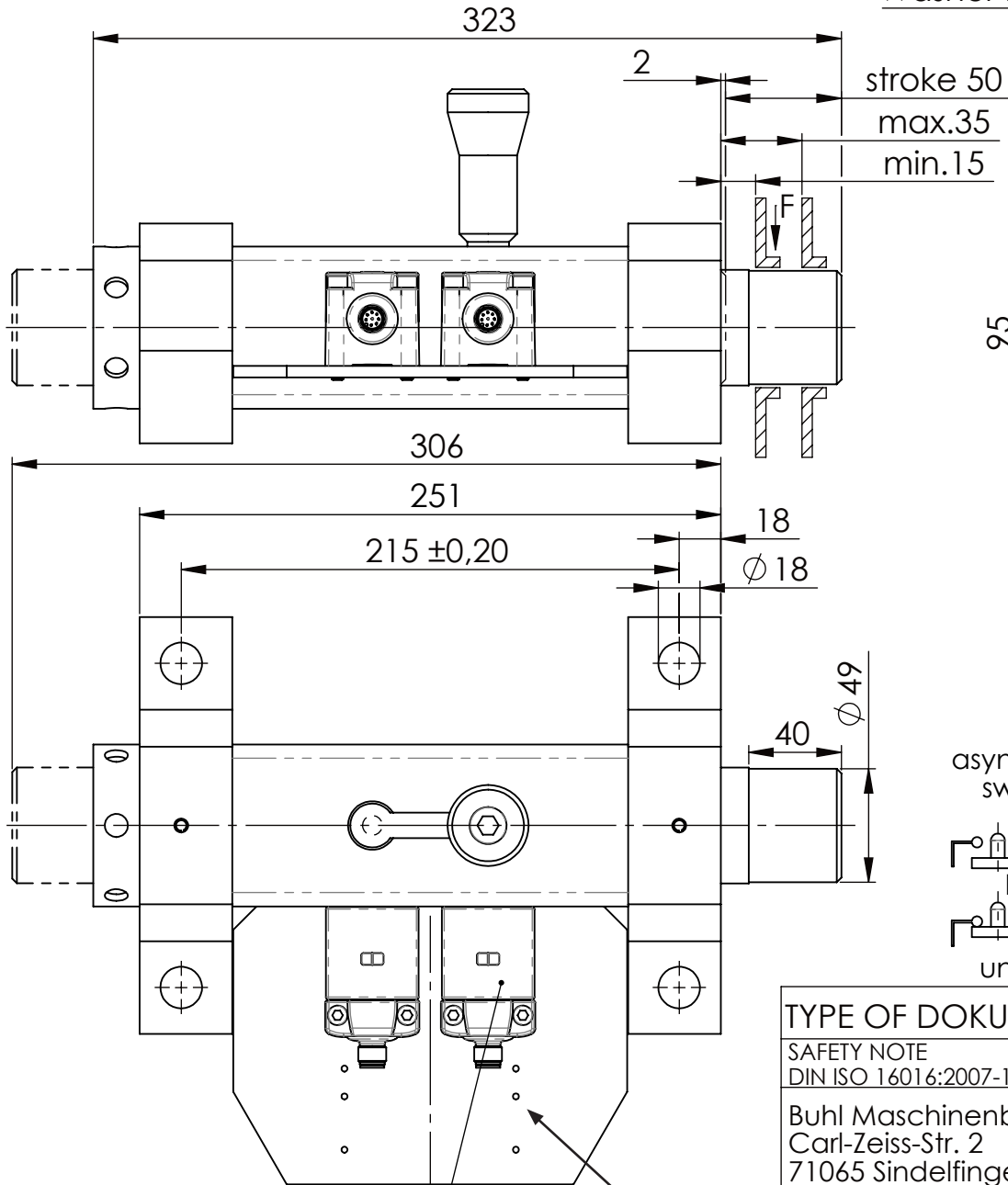
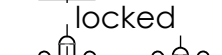


Hexagon Screw DIN 931/DIN EN ISO 4014-M16x60- 8.8, Ma=90Nm,
Washer DIN 125/DIN EN ISO 7089 -A17, retain with Loctite or similar



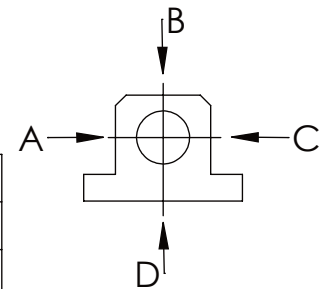
please observe the fivefold
security during welding of
the Retaining plate

asynchronous
switching



longholedisk

	A	B	C	D
F all.	22.000 N	6.185 N		
under static load				



Fa. Euchner, safety switch,
CES-AP-C01-AH-SB-111145

Holes Ø 2,6 (each 3 x) f. data plate

TYPE OF DOKUMENT: DATA SHEET

SAFETY NOTE

DIN ISO 16016:2007-12

Buhl Maschinenbau e.K.
Carl-Zeiss-Str. 2
71065 Sindelfingen

GENERAL TOLERANCE
DIN ISO 2768 m-K

FROM	6	30	120	400	1000	2000
TO	6	30	120	400	1000	2000
TOL.±	0.1	0.2	0.3	0.5	0.8	1.2

Date Name

DRAW. 06.07.23 G.Velleuer

APP. 06.07.23 W.Buhl

BUHL

WEIGHT [KG]: 13.41

PROJECTION

DESIGNATION

SAFETY LOCKING

ADDITIONAL DESIGNATION

SA 50H

DRAWING-NO.:

05 SA50H 01-03 U

SHEET-FORMAT

DINA4

SCALE

1:3

REV.

1