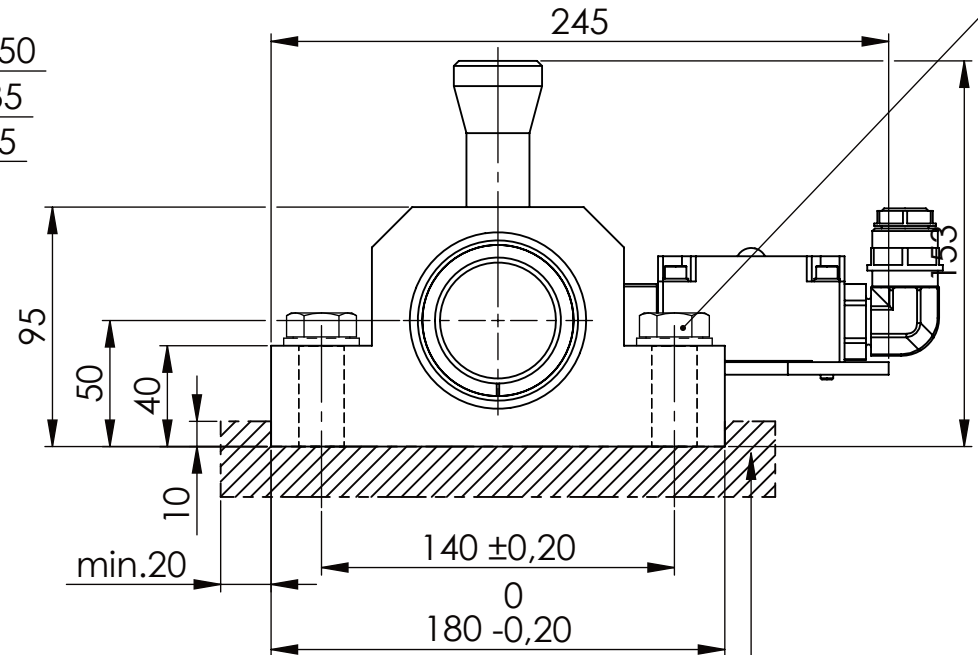
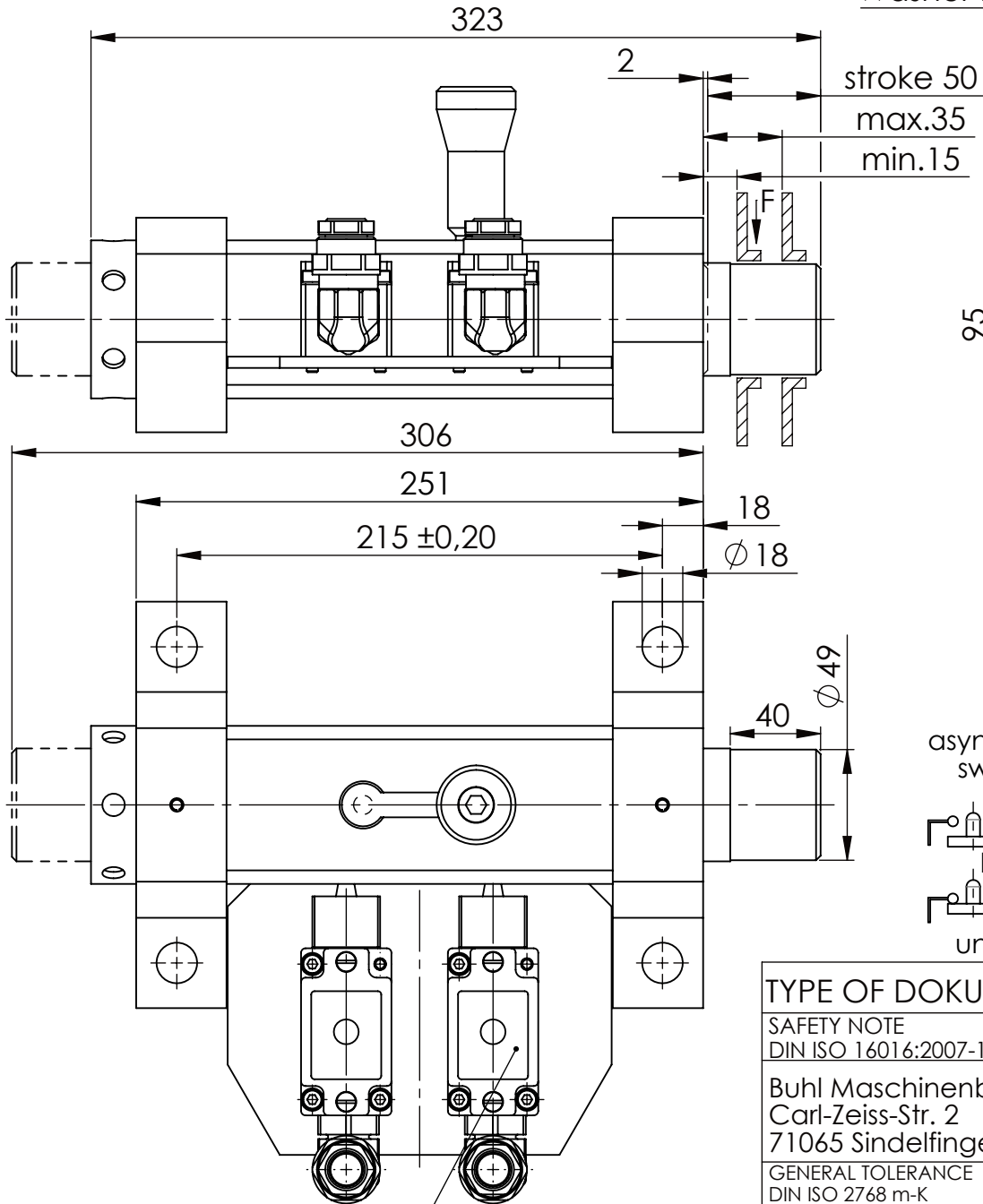


Hexagon Screw DIN 931/DIN EN ISO 4014-M16x60- 8.8, Ma=90Nm,
Washer DIN 125/DIN EN ISO 7089 -A17, retain with Loctite or similar

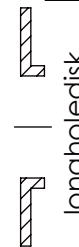


please observe the fivefold
security during welding of
the Retaining plate

asynchronous
switching

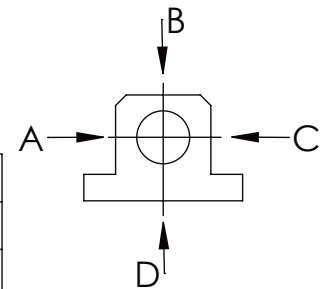


unlocked



longholedisk

	A	B	C	D
F all.	22.000 N	22.000 N	22.000 N	6.185 N
under static load				



Fa.Euchner, safety switch,
NZ2RS-511L060C1631

TYPE OF DOKUMENT: DATA SHEET

SAFETY NOTE
DIN ISO 16016:2007-12
Buhl Maschinenbau e.K.
Carl-Zeiss-Str. 2
71065 Sindelfingen

GENERAL TOLERANCE DIN ISO 2768 m-K							
FROM	6	30	120	400	1000	2000	
TO	6	30	120	400	1000	2000	4000
TOL.±	0,1	0,2	0,3	0,5	0,8	1,2	2,0

Buhl Maschinenbau e.K.
Sindelfingen

BUHL

WEIGHT [KG]: 13.94 PROJECTION

DESIGNATION	SHEET-FORMAT
SAFETY LOCKING	DINA4
ADDITIONAL DESIGNATION	SCALE
SA 50H	1:3
DRAWING-NO.:	REV.
05-SA 50 H 01-03	0