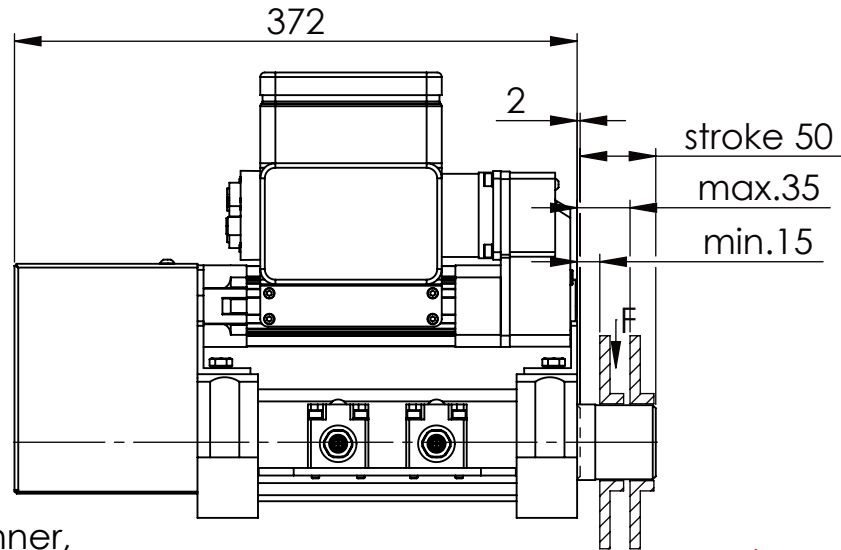
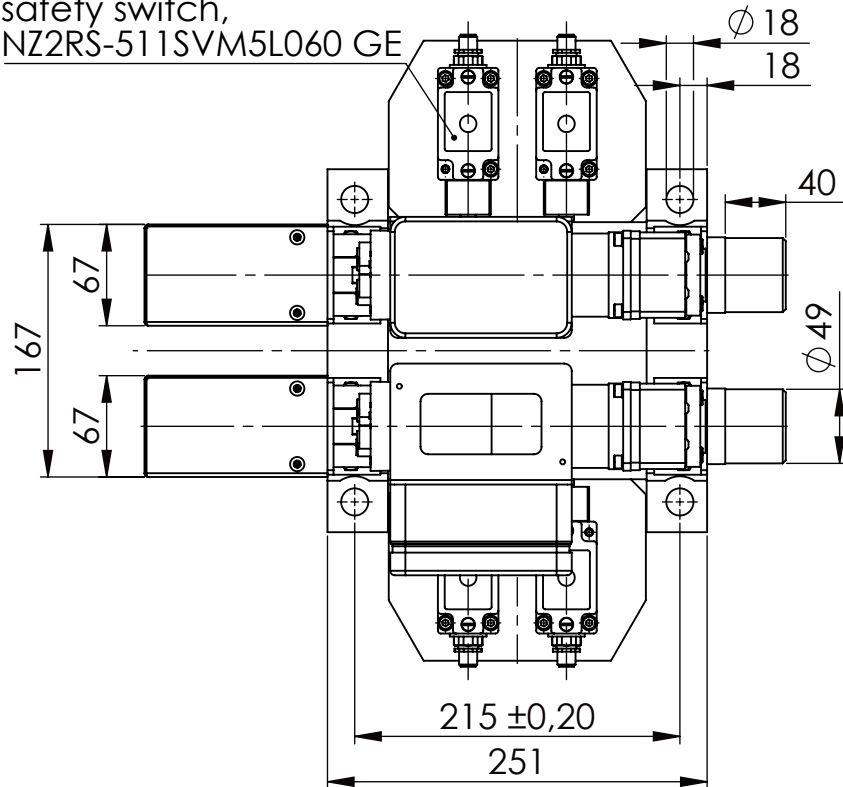


Socket Head Cap Screw DIN 912/DIN EN ISO 4762 - M16x60-8.8, Ma=90Nm,  
Washer DIN 125/DIN EN ISO 7089 -A17, retain with Loctite or similar

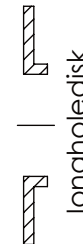
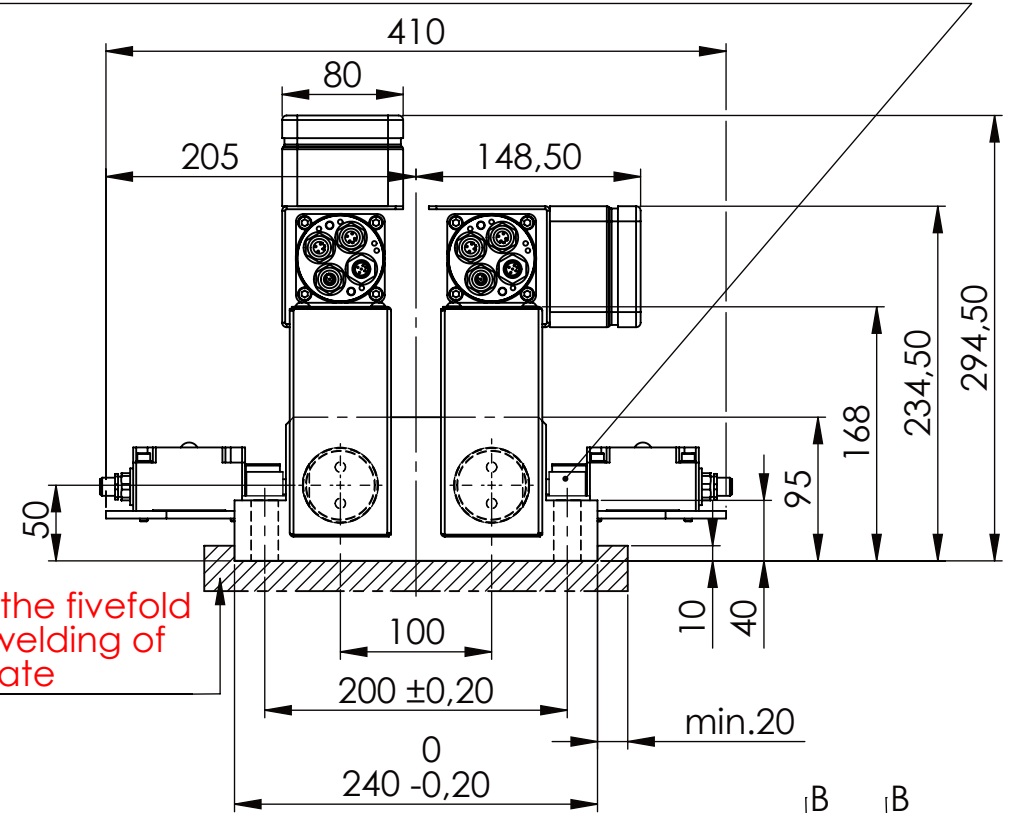
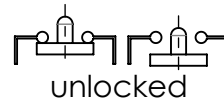


Fa.Euchner,  
safety switch,  
NZ2RS-511SVM5L060 GE

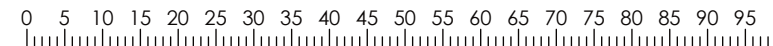
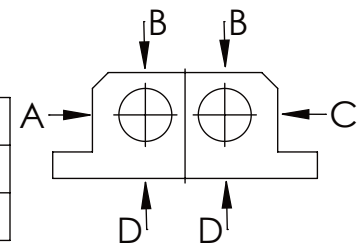


please observe the fivefold  
security during welding of  
the Retaining plate

asynchronous  
switching



A B C	D
F all. 22.000 N	6.185 N
under static load	



TYPE OF DOKUMENT: DATA SHEET

WEIGHT [KG]: 31.20

PROJEKTION

SAFETY NOTE  
DIN ISO 16016:2007-12

Buhl Maschinenbau e.K.  
Carl-Zeiss-Str. 2  
71065 Sindelfingen

DATE Name  
23.06.17 G.Velleuer  
23.06.17 W.Buhl

DESIGNATION

SAFETY LOCKING

ADDITIONAL DESIGNATION  
SA 50EMO T-2S

DRAWING-NO.:

05-SA 50 EMO T-2S 01-05M12

SHEET-  
FORMAT

DINA4

SCALE

1:5

REV.

0

GENERAL TOLERANCE  
DIN ISO 2768 m-K

FROM	6	30	120	400	1000	2000
TO	6	30	120	400	1000	2000
TOL.±	0.1	0.2	0.3	0.5	0.8	1.2

Buhl Maschinenbau e.K.  
Sindelfingen

**BUHL**