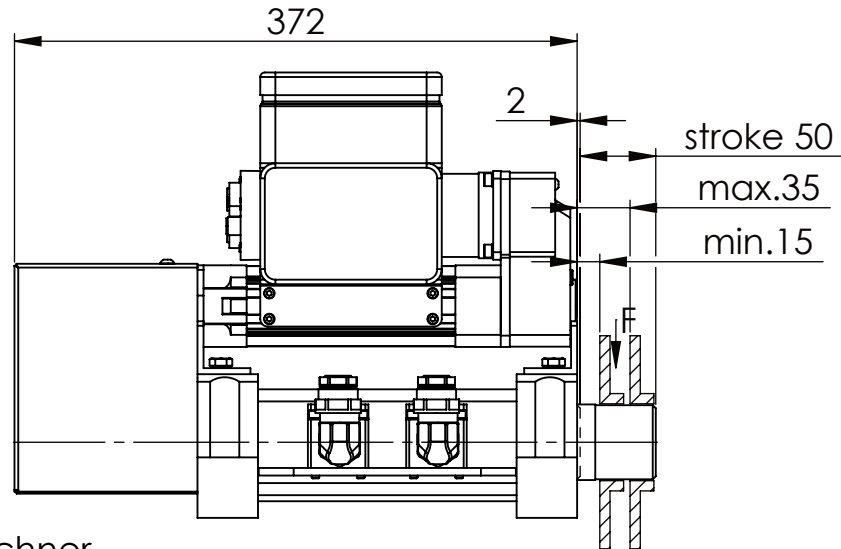
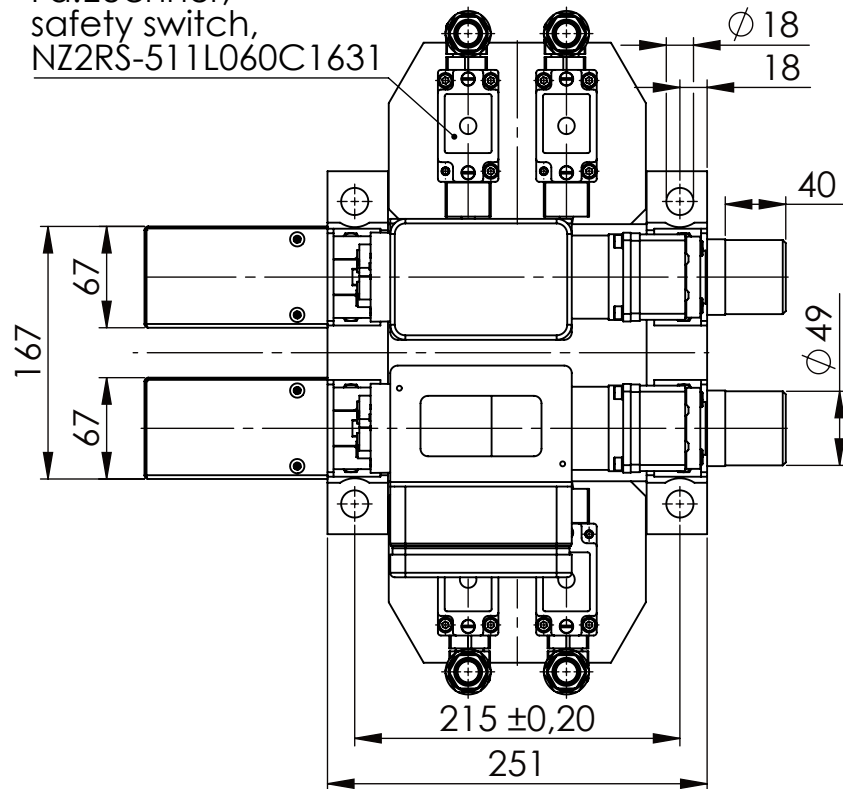


Socket Head Cap Screw DIN 912/DIN EN ISO 4762 - M16x60-8.8, Ma=90Nm,
Washer DIN 125/DIN EN ISO 7089 -A17, retain with Loctite or similar

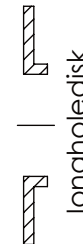
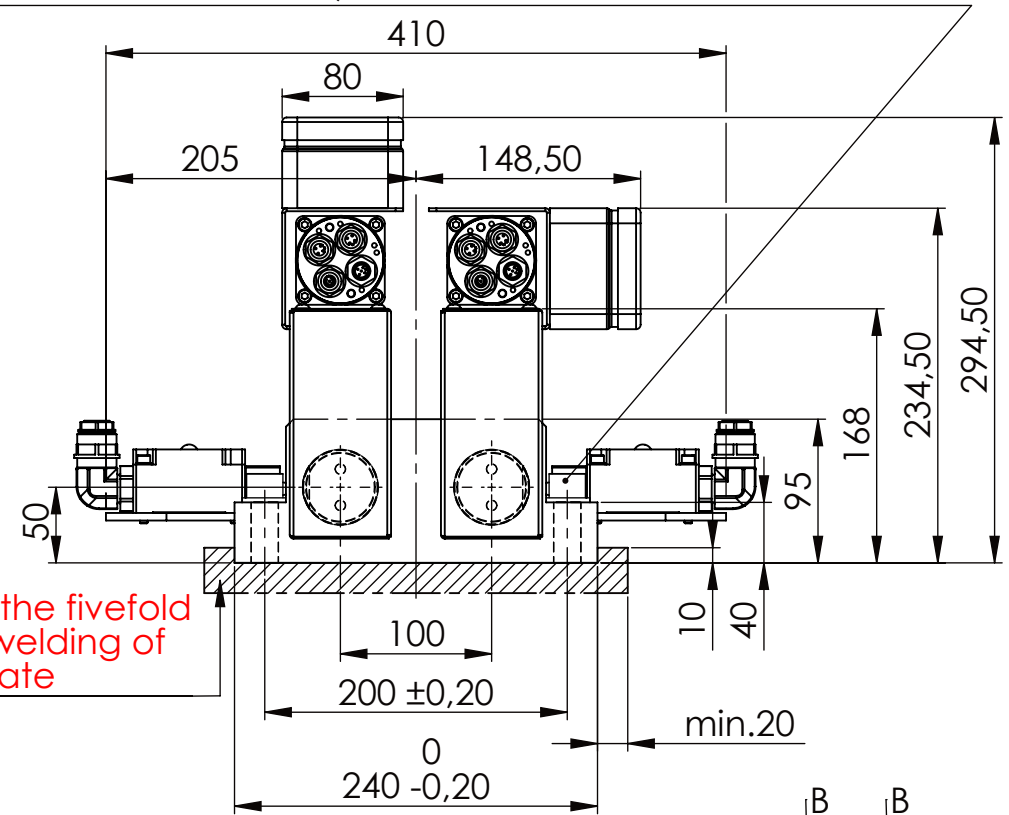
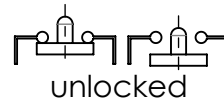


Fa.Euchner,
safety switch,
NZ2RS-511L060C1631

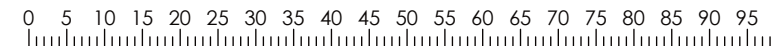
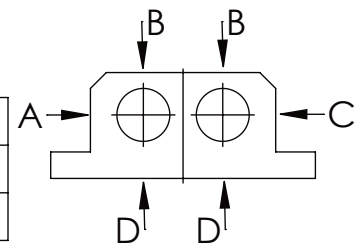


please observe the fivefold
security during welding of
the Retaining plate

asynchronous
switching



A B C	D
F all. 22.000 N	6.185 N
under static load	



TYPE OF DOKUMENT: DATA SHEET

WEIGHT [KG]: 31.20

PROJEKTION

SAFETY NOTE
DIN ISO 16016:2007-12

Buhl Maschinenbau e.K.
Carl-Zeiss-Str. 2
71065 Sindelfingen

DRAW.

Date
19.06.17

Name
G.Velleuer

APP.

Date
19.06.17

Name
W.Buhl

GENERAL TOLERANCE
DIN ISO 2768 m-K

FROM	6	30	120	400	1000	2000
TO	6	30	120	400	1000	2000
TOL.±	0.1	0.2	0.3	0.5	0.8	1.2

Buhl Maschinenbau e.K.
Sindelfingen

BUHL

DESIGNATION

SAFETY LOCKING

ADDITIONAL DESIGNATION

SA 50EMO T-2S

DRAWING-NO.:

05-SA 50 EMO T-2S 01-05

SHEET-
FORMAT
DINA4

SCALE
1:5

REV.
0