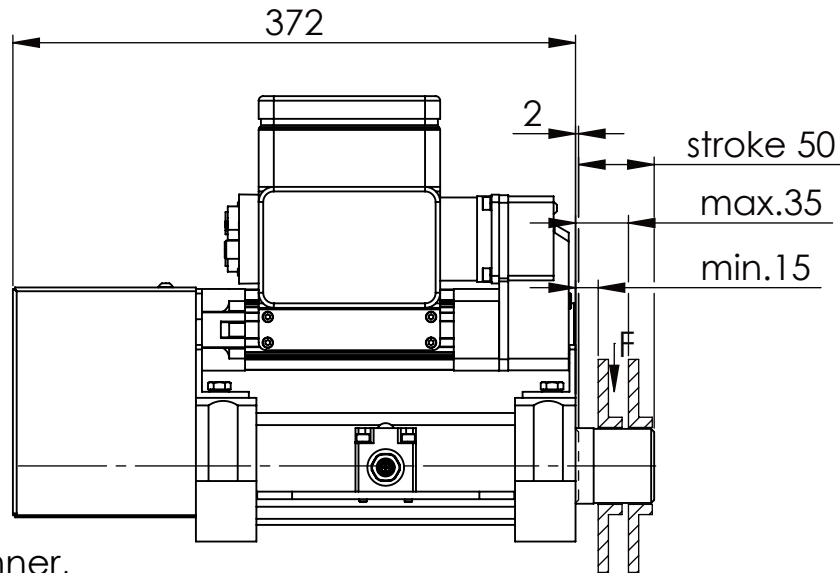
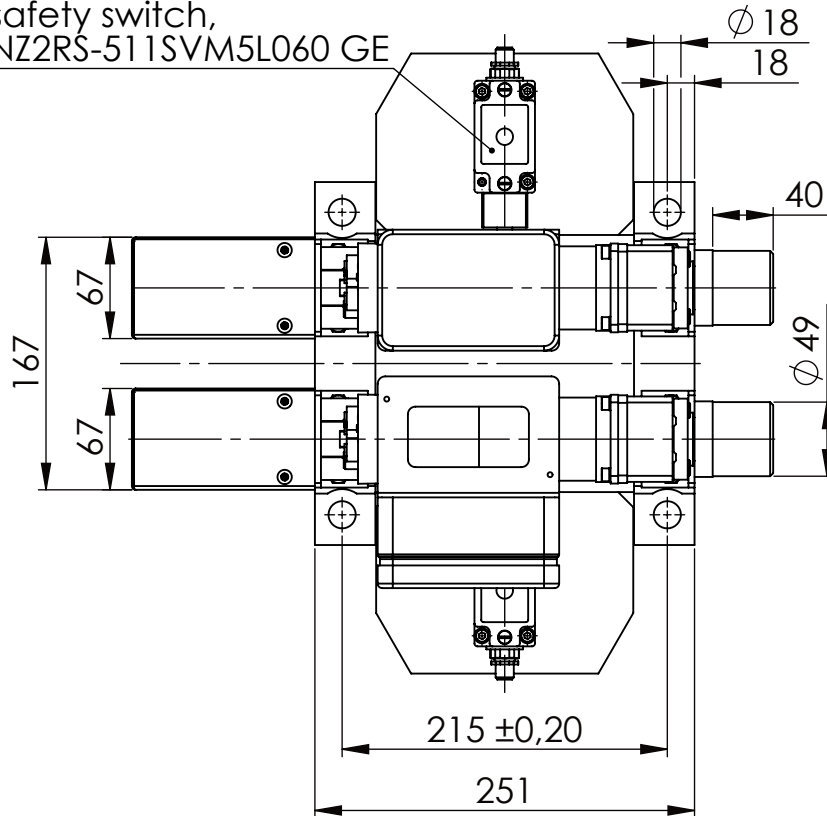


Socket Head Cap Screw DIN 912/DIN EN ISO 4762 - M16x60-8.8, Ma=90Nm,
Washer DIN 125/DIN EN ISO 7089 -A17, retain with Loctite or similar

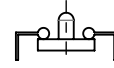
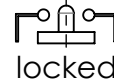


Fa. Euchner,
safety switch,
NZ2RS-511SVM5L060 GE

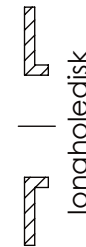
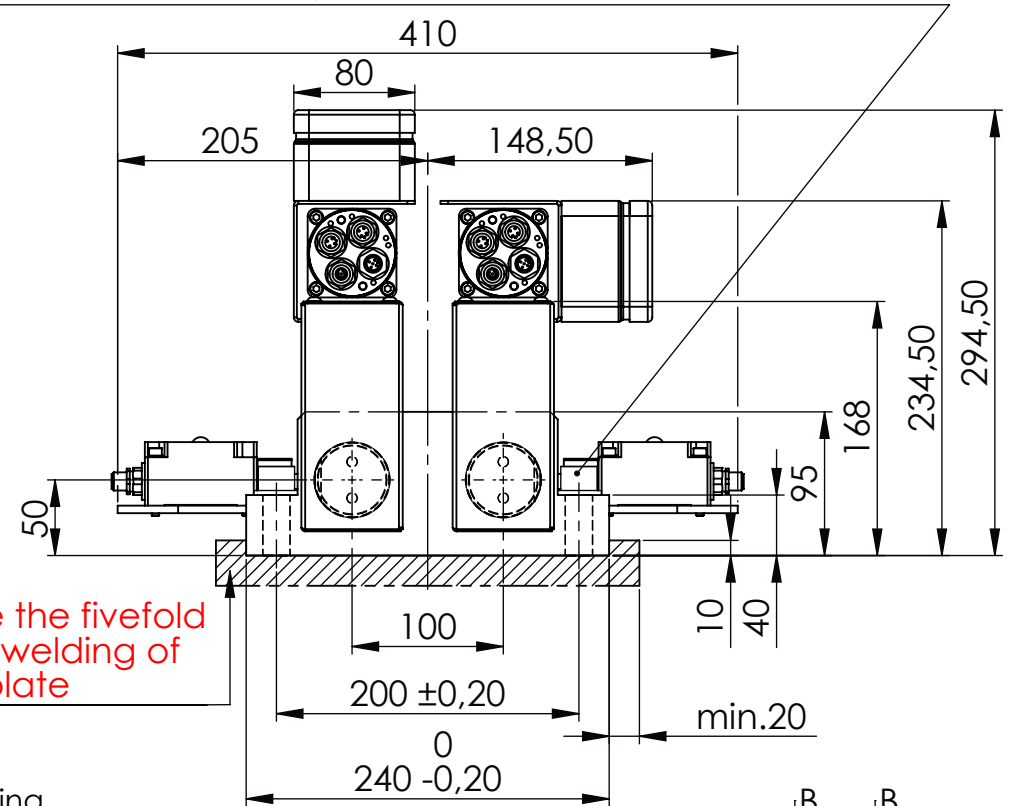


please observe the fivefold
security during welding of
the Retaining plate

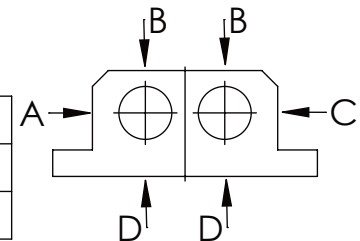
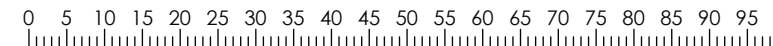
safety locking
with one
switch/bold



unlocked



A	B	C	D
F all.	22.000 N	6.185 N	
under static load			



TYPE OF DOKUMENT: DATA SHEET

WEIGHT [KG]: 30.36

PROJEKTION

SAFETY NOTE
DIN ISO 16016:2007-12

Buhl Maschinenbau e.K.
Carl-Zeiss-Str. 2
71065 Sindelfingen

GENERAL TOLERANCE
DIN ISO 2768 m-K

FROM	6	30	120	400	1000	2000
TO	6	30	120	400	1000	2000
TOL.±	0.1	0.2	0.3	0.5	0.8	1.2

Buhl Maschinenbau e.K.
Sindelfingen

BUHL

Date Name
13.07.17 G.Velleuer
13.07.17 W.Buhl

DESIGNATION

SAFETY LOCKING

ADDITIONAL DESIGNATION
SA 50EMO T-1S

DRAWING-NO.:
05-SA 50 EMO T-1S 01-05M12

SHEET-
FORMAT
DINA4

SCALE
1:5

REV.
0