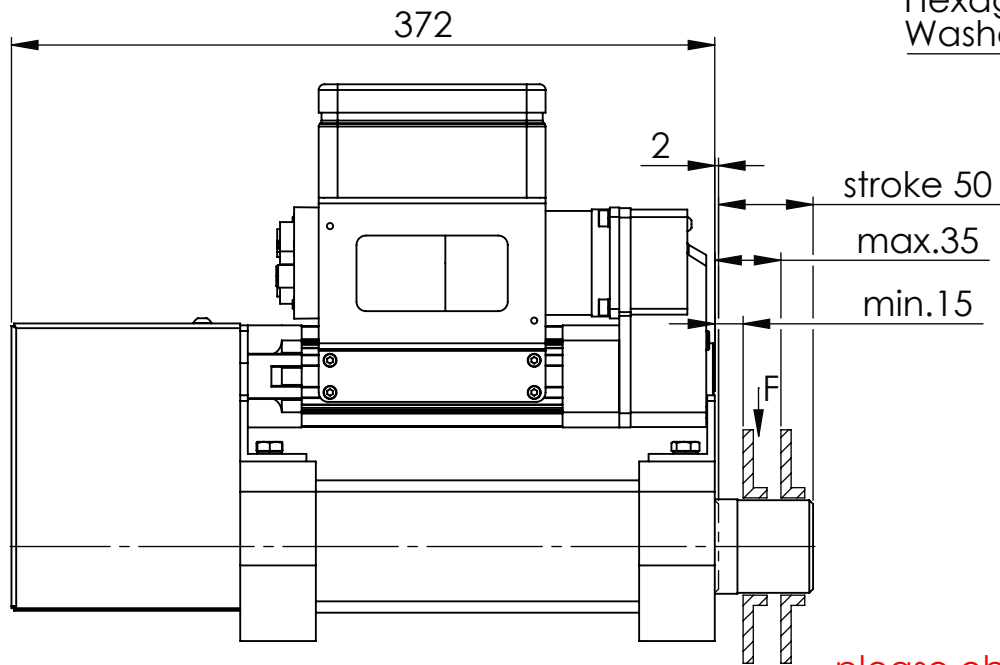
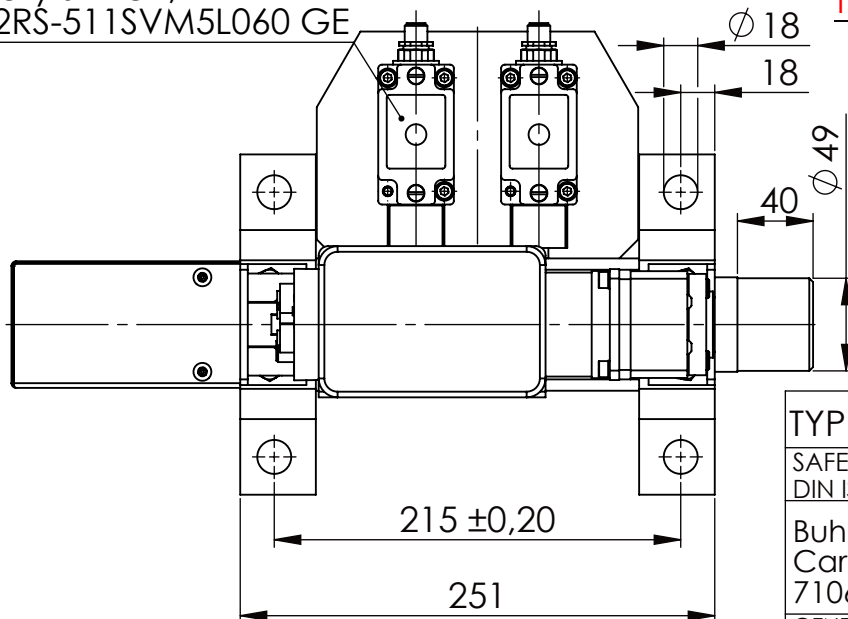


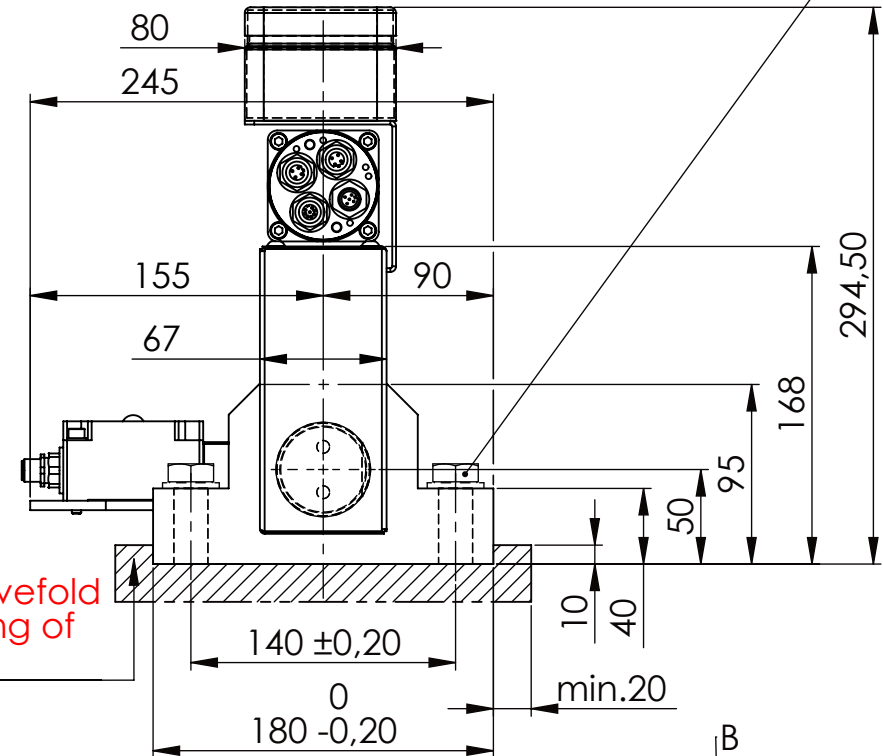
Hexagon Screw DIN 931/DIN EN ISO 4014-M16x60- 8.8, Ma=90Nm,
Washer DIN 125/DIN EN ISO 7089 -A17, retain with Loctite or similar



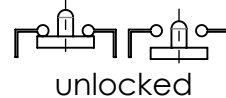
Fa.Euchner,
safety switch,
NZ2RS-511SVM5L060 GE



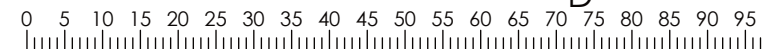
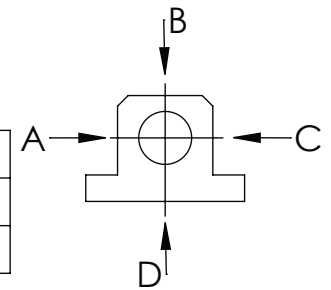
please observe the fivefold
security during welding of
the Retaining plate



asynchronous
switching



A	B	C	D
F all.	22.000 N	6.185 N	
under static load			



TYPE OF DOKUMENT: DATA SHEET

WEIGHT [KG]: 17.08

PROJEKTION

SAFETY NOTE
DIN ISO 16016:2007-12

Buhl Maschinenbau e.K.
Carl-Zeiss-Str. 2
71065 Sindelfingen

	Date	Name
DRAW.	19.06.17	G.Velleuer
APP.	19.06.17	W.Buhl

DESIGNATION

SAFETY LOCKING

ADDITIONAL DESIGNATION

SA 50EMO

DRAWING-NO.:

05-SA 50 EMO 02-05M12

SHEET-FORMAT

DINA4

SCALE

1:4

REV.

0

GENERAL TOLERANCE
DIN ISO 2768 m-K

FROM	6	30	120	400	1000	2000
TO	6	30	120	400	1000	2000
TOL.±	0.1	0.2	0.3	0.5	0.8	1.2

Buhl Maschinenbau e.K.
Sindelfingen

BUHL