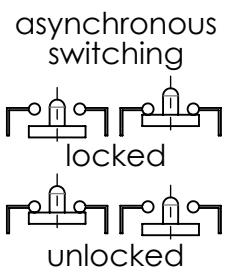


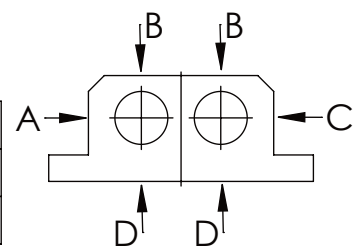
Socket Head Cap Screw DIN 912/DIN EN ISO 4762 - M16x60-8.8, Ma=90Nm,
Washer DIN 125/DIN EN ISO 7089 -A17, retain with Loctite or similar



Fa.Euchner,
safety switch,
NZ2RS-511SVM5L060 GE

please observe the fivefold
security during welding of
the Retaining plate



	A B C	D
F all.	22.000 N	6.185 N
under static load		



TYPE OF DOKUMENT: DATA SHEET										WEIGHT [KG]: 46.56			PROJEKTION					
SAFETY NOTE DIN ISO 16016:2007-12							Date	Name		DESIGNATION					SHEET-FORMAT			
Buhl Maschinenbau e.K. Carl-Zeiss-Str. 2 71065 Sindelfingen						DRAW.	23.06.17	G.Velleuer		SAFETY LOCKING					DINA4			
						APP.	23.06.17	W.Buhl							SCALE			
GENERAL TOLERANCE DIN ISO 2768 m-K						<div>Buhl Maschinenbau e.K. Sindelfingen</div> 					ADDITIONAL DESIGNATION SA 50EMT-2S					1:5		
FROM		6	30	120	400						1000	2000	DRAWING-NO.:					REV.
TO		6	30	120	400						1000	2000	05-SA 50 EM T-2S 01-05M12					0
TOL.±		0.1	0.2	0.3	0.5						0.8	1.2						