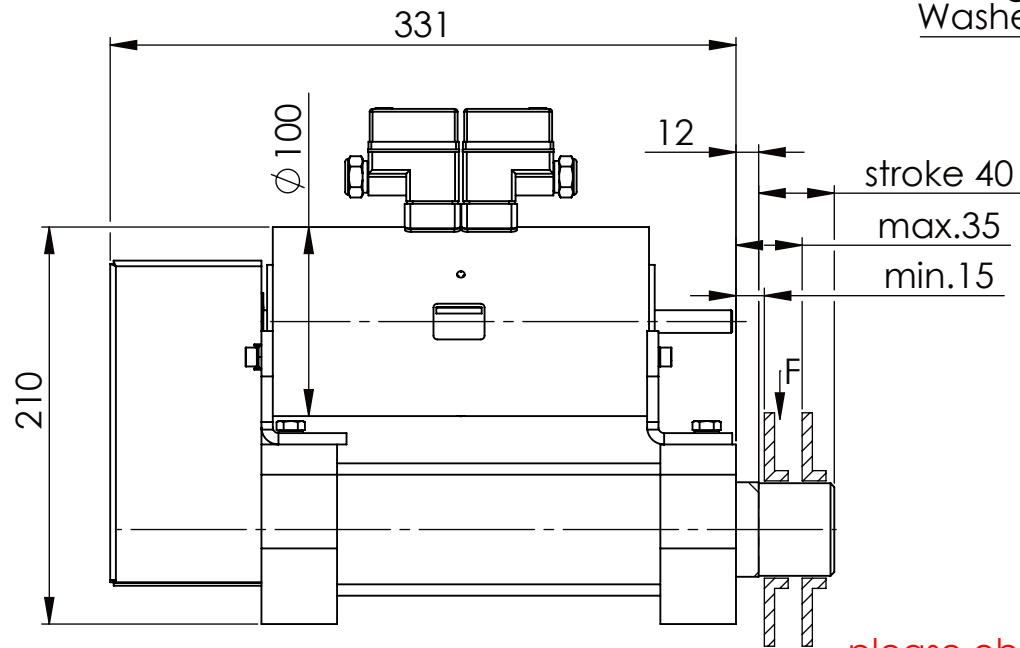
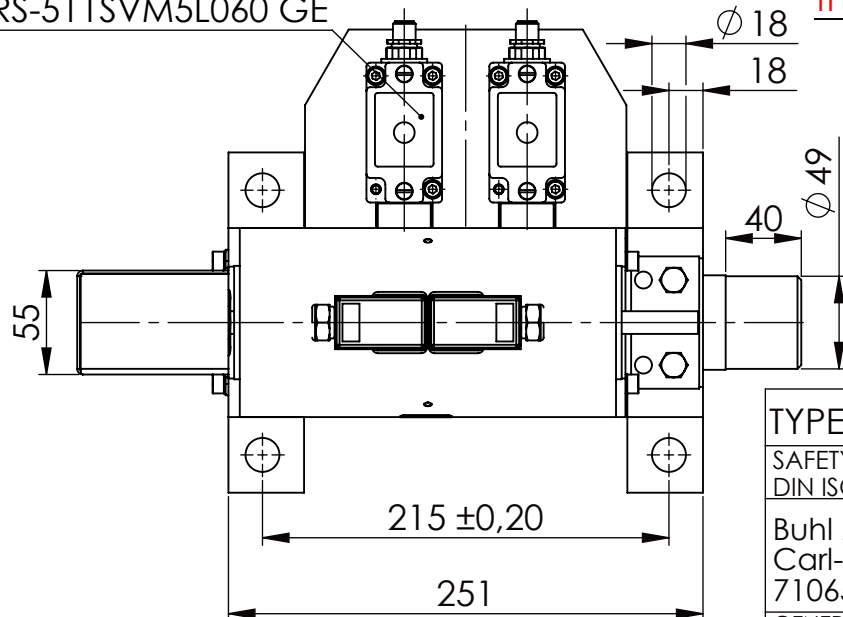


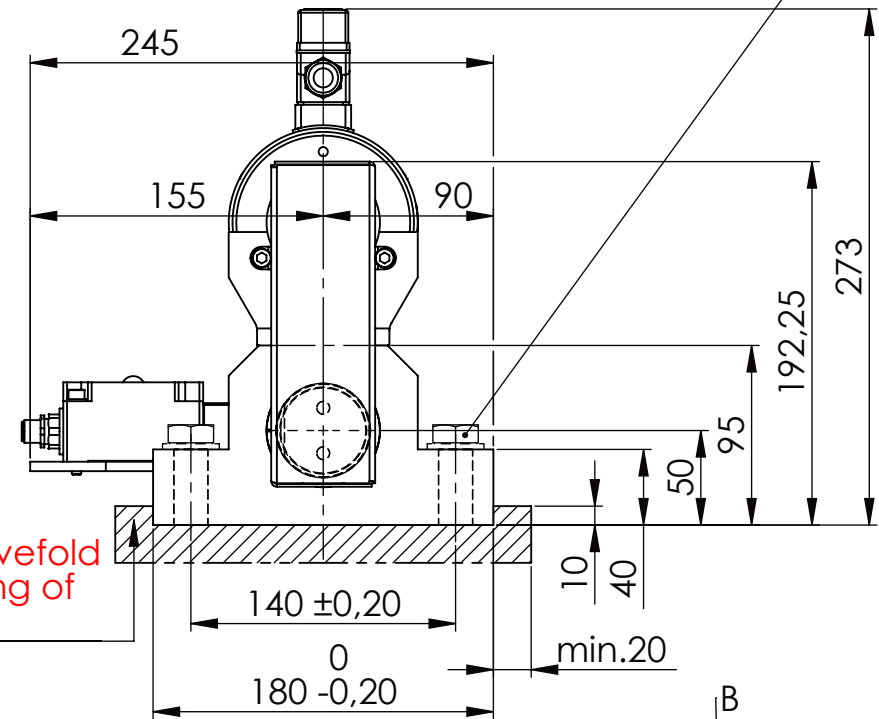
Hexagon Screw DIN 931/DIN EN ISO 4014-M16x60- 8.8, Ma=90Nm,
Washer DIN 125/DIN EN ISO 7089 -A17, retain with Loctite or similar



Fa.Euchner,
safety switch,
NZ2RS-511SVM5L060 GE



please observe the fivefold
security during welding of
the Retaining plate



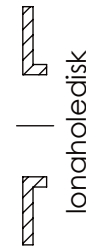
asynchronous
switching



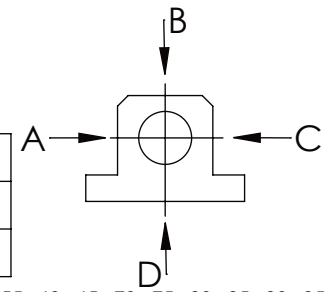
locked



unlocked



	A	B	C	D
F all.	22.000 N			6.185 N
under static load				



TYPE OF DOKUMENT: DATA SHEET

SAFETY NOTE
DIN ISO 16016:2007-12
Buhl Maschinenbau e.K.
Carl-Zeiss-Str. 2
71065 Sindelfingen

GENERAL TOLERANCE DIN ISO 2768 m-K							
FROM	6	30	120	400	1000	2000	
TO	6	30	120	400	1000	2000	4000
TOL.±	0.1	0.2	0.3	0.5	0.8	1.2	2.0

Buhl Maschinenbau e.K.
Sindelfingen

BUHL

WEIGHT [KG]: 24.76

PROJEKTION

DESIGNATION

SAFETY LOCKING

ADDITIONAL DESIGNATION

SA 50EM

DRAWING-NO.:

05-SA 50 EM 02-05M12

SHEET-
FORMAT

DINA4

SCALE

1:4

REV.

0