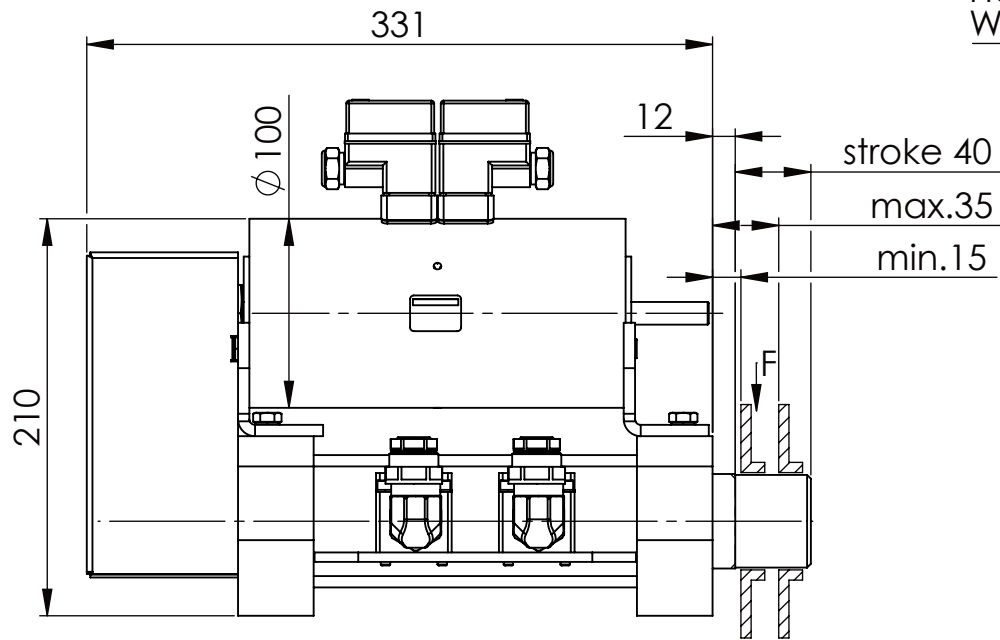
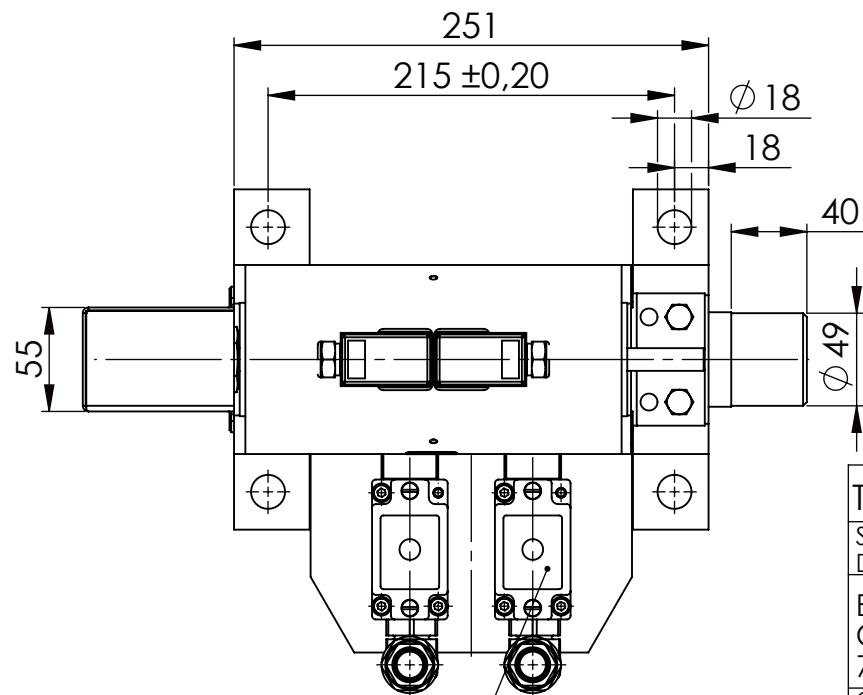
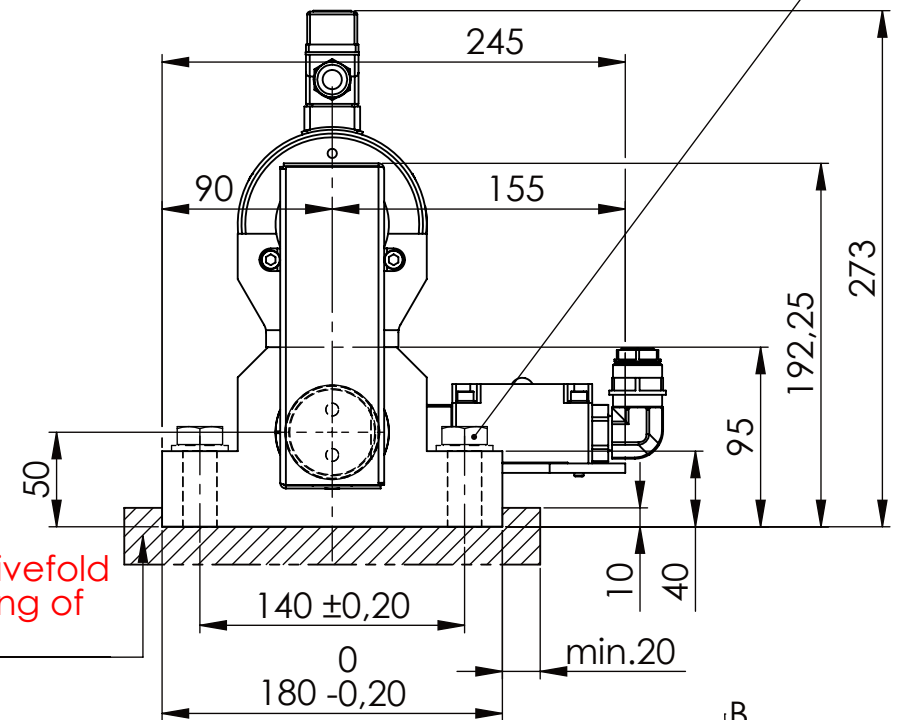


Hexagon Screw DIN 931/DIN EN ISO 4014-M16x60- 8.8, Ma=90Nm,
Washer DIN 125/DIN EN ISO 7089 -A17, retain with Loctite or similar



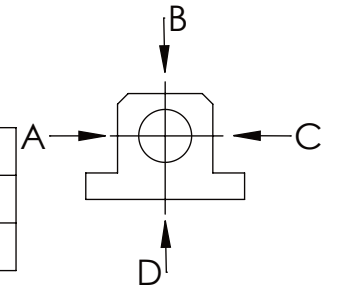
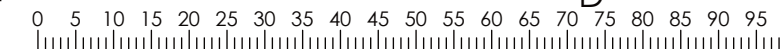
please observe the fivefold
security during welding of
the Retaining plate



asynchronous
switching



	A	B	C	D
F all.	22.000 N	6.185 N		
under static load				



Fa.Euchner, safety switch,
NZ2RS-511L060C1631

TYPE OF DOKUMENT: DATA SHEET

WEIGHT [KG]: 24.76

PROJEKTION

SAFETY NOTE
DIN ISO 16016:2007-12
Buhl Maschinenbau e.K.
Carl-Zeiss-Str. 2
71065 Sindelfingen

DATE
Date
Name
G.Velleuer
APP.
23.06.17
W.Buhl

DESIGNATION
SAFETY LOCKING
ADDITIONAL DESIGNATION
SA 50EM
DRAWING-NO.:
05-SA 50 EM 01-05

SHEET-FORMAT
DINA4
SCALE
1:4
REV.
0

GENERAL TOLERANCE DIN ISO 2768 m-K							
FROM	6	30	120	400	1000	2000	
TO	6	30	120	400	1000	2000	4000
TOL.±	0.1	0.2	0.3	0.5	0.8	1.2	2.0

Buhl Maschinenbau e.K.
Sindelfingen
BUHL