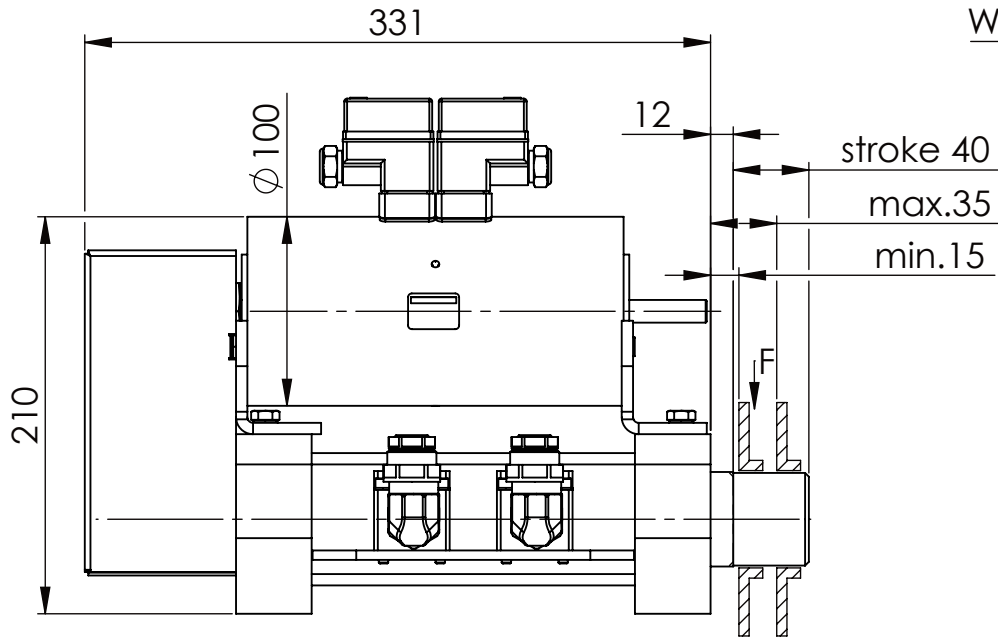
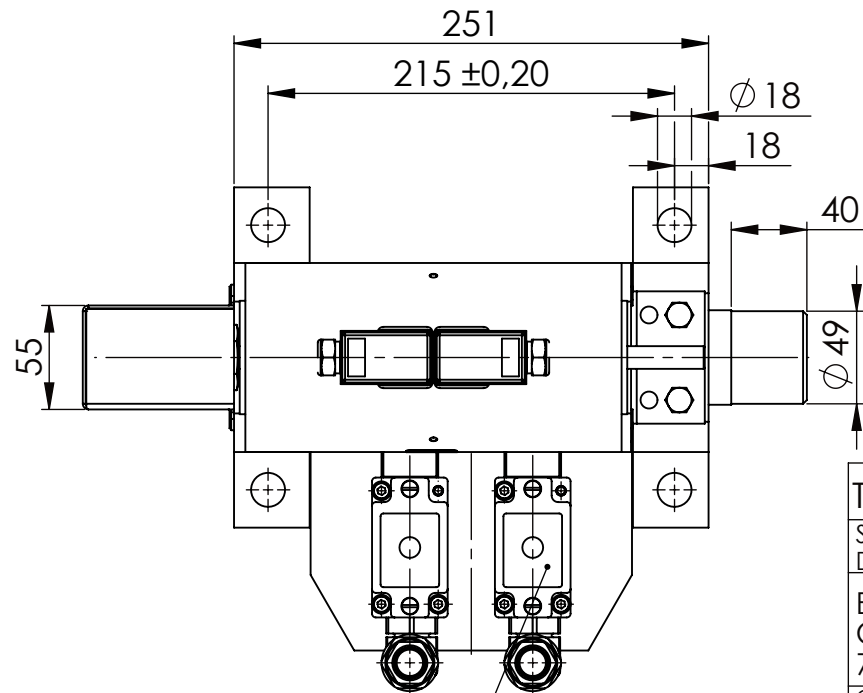
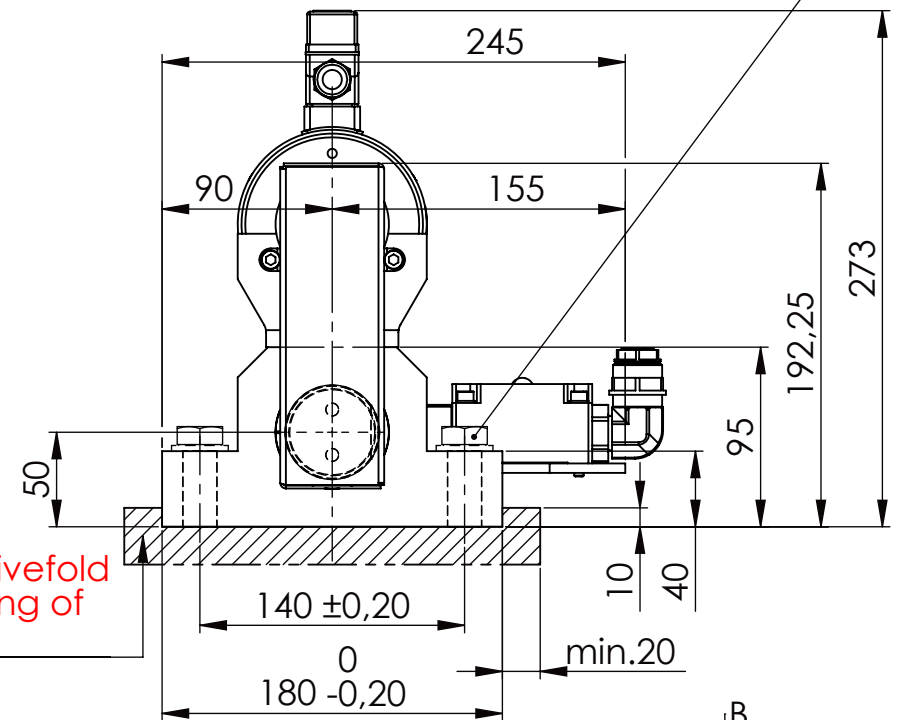


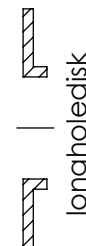
Hexagon Screw DIN 931/DIN EN ISO 4014-M16x60- 8.8, Ma=90Nm,  
Washer DIN 125/DIN EN ISO 7089 -A17, retain with Loctite or similar



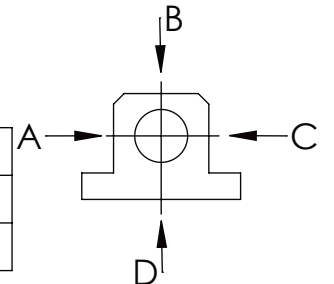
please observe the fivefold  
security during welding of  
the Retaining plate



asynchronous  
switching



	A	B	C	D
F all.	22.000 N			6.185 N
under static load				



Fa.Euchner, safety switch,  
NZ2RS-511L060C1631

TYPE OF DOKUMENT: DATA SHEET

SAFETY NOTE  
DIN ISO 16016:2007-12  
Buhl Maschinenbau e.K.  
Carl-Zeiss-Str. 2  
71065 Sindelfingen

GENERAL TOLERANCE DIN ISO 2768 m-K							
FROM	6	30	120	400	1000	2000	
TO	6	30	120	400	1000	2000	4000
TOL.±	0.1	0.2	0.3	0.5	0.8	1.2	2.0

Buhl Maschinenbau e.K.  
Sindelfingen

**BUHL**

WEIGHT [KG]: 24.76

PROJEKTION

DESIGNATION

SAFETY LOCKING

ADDITIONAL DESIGNATION

SA 50EM

DRAWING-NO.:

05-SA 50 EM 01-03

SHEET-  
FORMAT  
DINA4

SCALE  
1:4

REV.  
0