

Technical drawing of a 6-position U-shaped pneumatic cylinder. The drawing shows a side view of the cylinder with a central body and two end caps. The total length is 267. The distance between the two end caps is 40. The height of the cylinder is 80. The end cap on the left has a pneumatic connection G 1/8. The end cap on the right has a force F applied to it. The drawing also shows the internal components of the cylinder, including the piston and the U-shaped rod. The text "Sechsstufiger U-Sch" is visible in the top right corner. The text "Hub 40", "max. 30", and "min. 20" are visible on the right side. The text "Pneumatischer Anschluss G 1/8" is visible at the bottom left. The text "beim Halten" is visible in red at the bottom right.

Technical drawing of a safety switch assembly. The drawing shows a side view of the assembly with dimensions and labels.

Dimensions:

- Overall width: 150
- Distance from left edge to center of top hole: $110 \pm 0,20$
- Distance from right edge to center of top hole: 20
- Distance from right edge to center of bottom hole: 30

Labels:

- Pneumatischer Anschluss G 1/8
- a. Euchner, Sicherheitsschalter

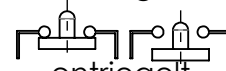
Fa. Euchner,
Sicherheitsschalter,
CES-AP-C01-AH-SB-111145

Zum Ansteuern der Sicherheitsabsteckung
ist ein 5/2 Wege-Ventil zu benutzen.

Wechselschaltg.



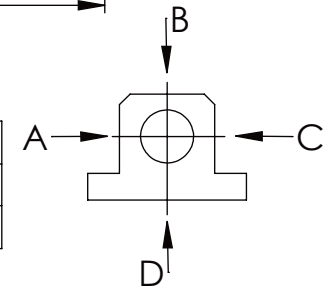
verriegelt



entriegelt

Landlochscheibe

	A B C D
F _{zul.}	10.000 N
bei stat. Belastung	



Dokumentenart: Datenblatt

SCHUTZVERMERK NACH
DIN ISO 16016:2007-12 BEACHTEN

Buhl Maschinenbau e.K.
Carl-Zeiss-Str. 2
71065 Sindelfingen


Allgemeintoleranz DIN ISO 2768 m-K

von		6	30	120	400	1000	2000
bis	6	30	120	400	1000	2000	4000
Tol.±	0.1	0.2	0.3	0.5	0.8	1.2	2.0

謝文耀 謝文耀

BUHL

Gewicht [kg]: 18.98

Projektion 

Benennung:	Sicherheitsabsteckung
------------	-----------------------

Blatt-
format:
DINA4

Zusatzbenennung:	SA 30PT
------------------	---------

Zeichnungs-Nr.:
05 SA30PT 03-05 U

Maßstab: 1:3
Revision 1