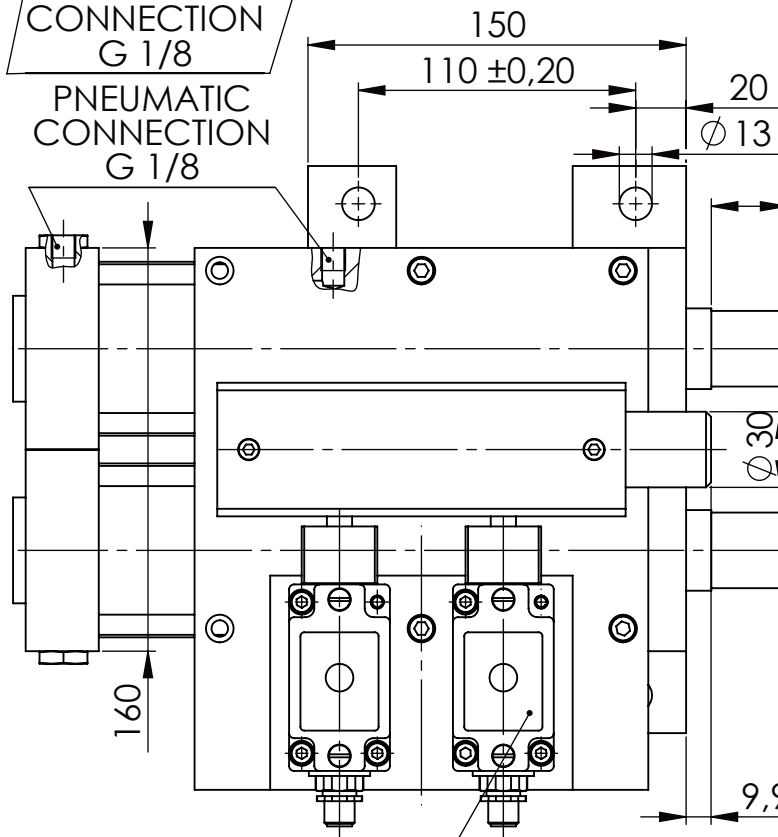


PNEUMATIC
CONNECTION
G 1/8

PNEUMATIC
CONNECTION
G 1/8

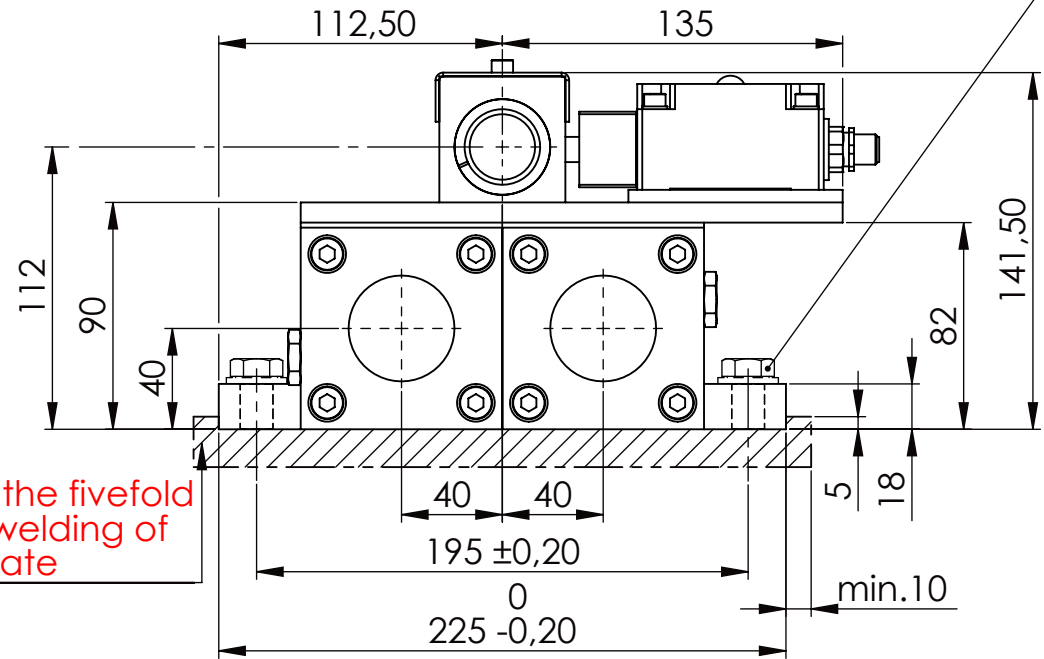
stroke 40
max.30
min.20

please observe the fivefold
security during welding of
the Retaining plate



Fa.Euchner,
safety switch,
NZ2RS-511SVM5L060 GE

Hexagon Screw DIN 931/DIN EN ISO 4014-M12x35- 10.9, Ma=37Nm,
Washer DIN 125/DIN EN ISO 7089 -A13, retain with Loctite or similar



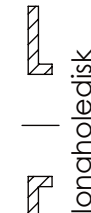
asynchronous
switching



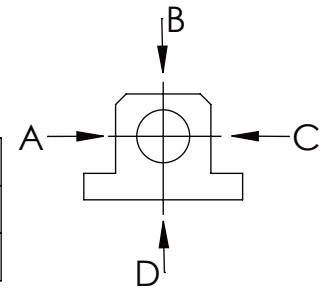
locked



unlocked



A	B	C	D
F all.	10.000 N		
under static load			



TYPE OF DOKUMENT: DATA SHEET

WEIGHT [KG]: 23.67

PROJECTION

SAFETY NOTE
DIN ISO 16016:2007-12
Buhl Maschinenbau e.K.
Carl-Zeiss-Str. 2
71065 Sindelfingen

DATE
Date
Name
G.Velleuer
DRAW.
23.06.17
APP.
23.06.17
W.Buhl

DESIGNATION
SAFETY LOCKING
ADDITIONAL DESIGNATION
SA 30PT

SHEET-
FORMAT
DINA4
SCALE
1:3

GENERAL TOLERANCE DIN ISO 2768 m-K							
FROM	6	30	120	400	1000	2000	
TO	6	30	120	400	1000	2000	4000
TOL.±	0.1	0.2	0.3	0.5	0.8	1.2	2.0

Buhl Maschinenbau e.K.
Sindelfingen
BUHL

DRAWING-NO.:
05-SA 30 PT 02-05M12
REV.
0