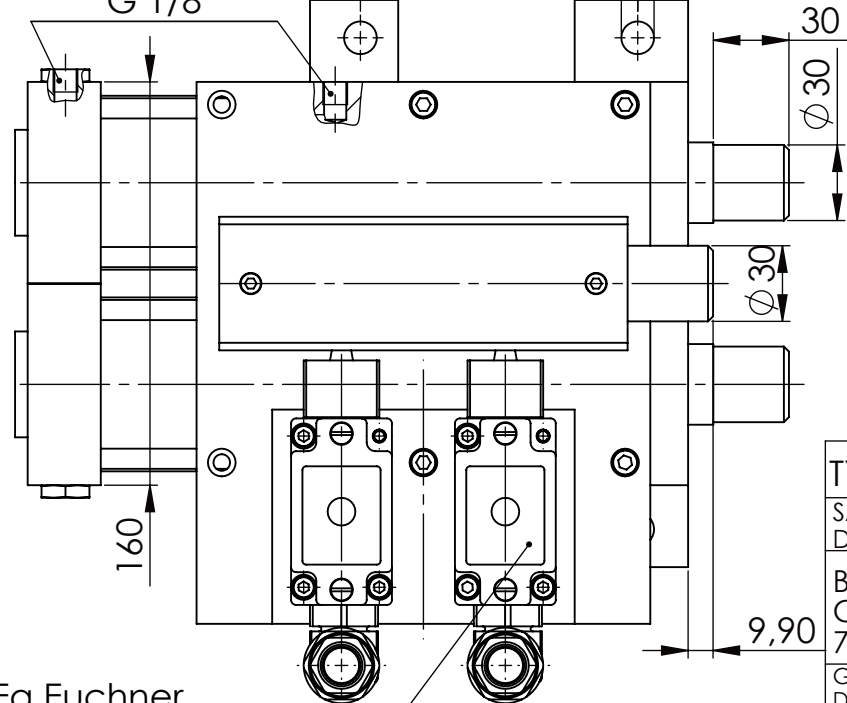


PNEUMATIC CONNECTION
G 1/8

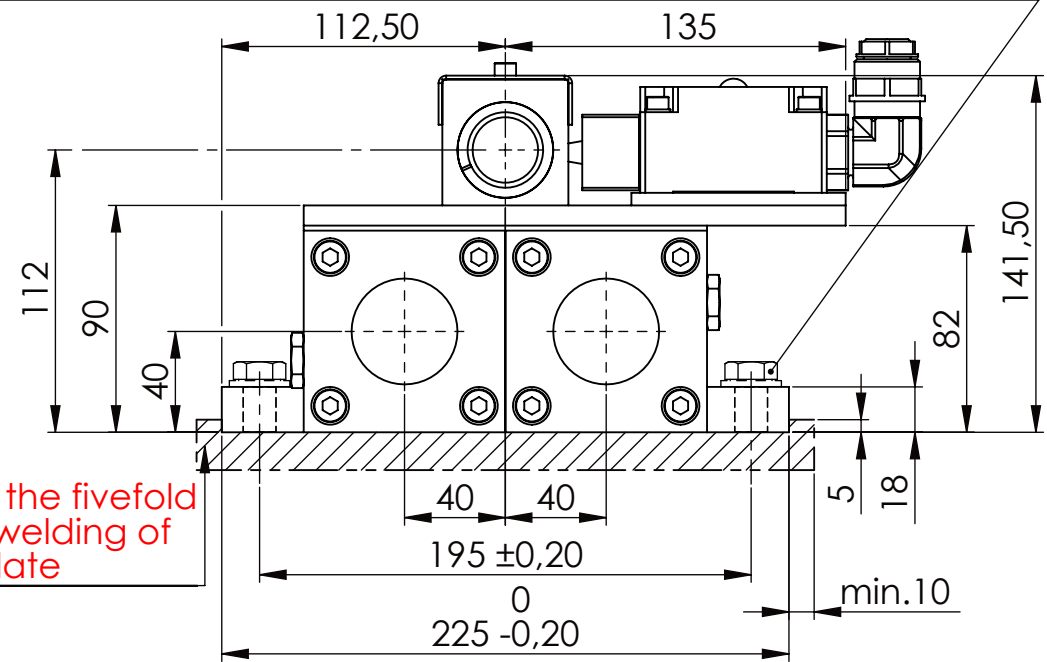
PNEUMATIC CONNECTION
G 1/8



Fa.Euchner,
safety switch,
NZ2RS-511L060C1631

please observe the fivefold
security during welding of
the Retaining plate

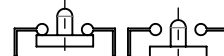
Hexagon Screw DIN 931/DIN EN ISO 4014-M12x35- 10.9, Ma=37Nm,
Washer DIN 125/DIN EN ISO 7089 -A13, retain with Loctite or similar



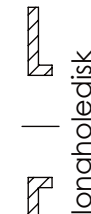
asynchronous
switching



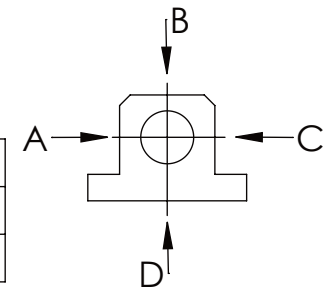
locked



unlocked



A	B	C	D
F all.	10.000 N		
under static load			



TYPE OF DOKUMENT: DATA SHEET

SAFETY NOTE
DIN ISO 16016:2007-12

Buhl Maschinenbau e.K.
Carl-Zeiss-Str. 2
71065 Sindelfingen

GENERAL TOLERANCE
DIN ISO 2768 m-K

FROM	6	30	120	400	1000	2000
TO	6	30	120	400	1000	2000
TOL.±	0.1	0.2	0.3	0.5	0.8	1.2

Buhl Maschinenbau e.K.
Sindelfingen

BUHL

WEIGHT [KG]: 23.67

PROJECTION

DESIGNATION

SAFETY LOCKING

ADDITIONAL DESIGNATION

SA 30PT

DRAWING-NO.:

05-SA 30 PT 02-05

SHEET-
FORMAT
DINA4

SCALE
1:3

REV.
0