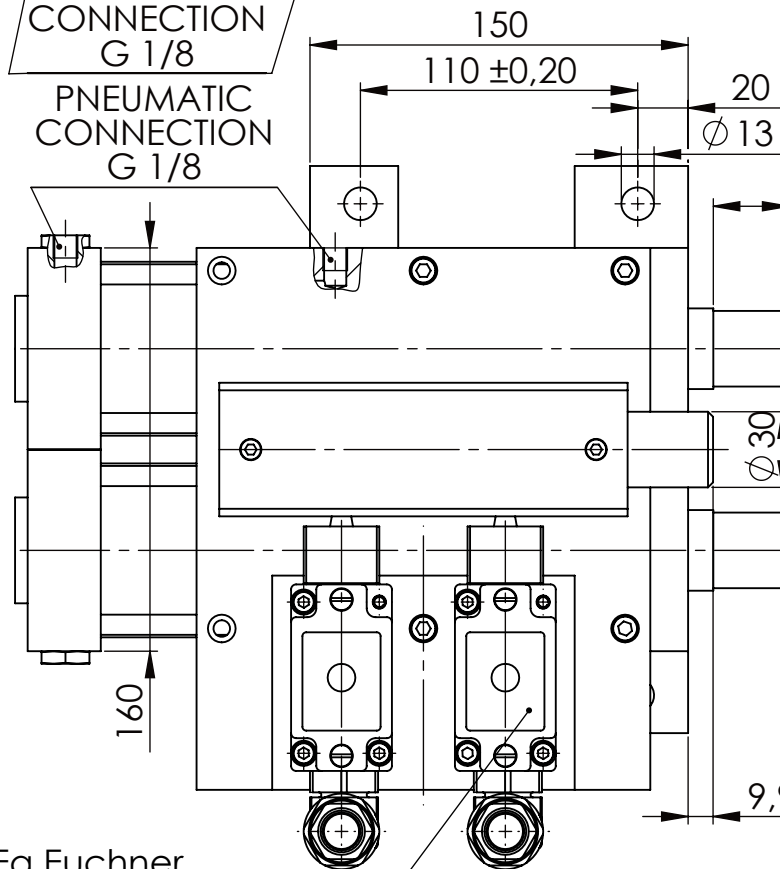


PNEUMATIC
CONNECTION
G 1/8

PNEUMATIC
CONNECTION
G 1/8

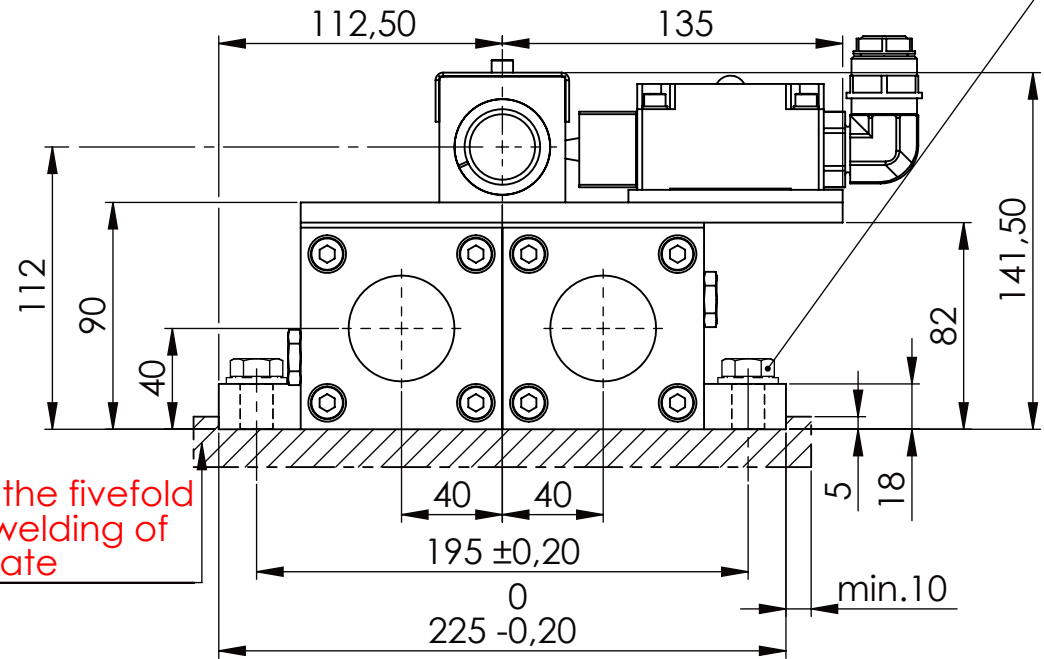
stroke 40
max.30
min.20

please observe the fivefold
security during welding of
the Retaining plate



Fa.Euchner,
safety switch,
NZ2RS-511L060C1631

Hexagon Screw DIN 931/DIN EN ISO 4014-M12x35- 10.9, Ma=37Nm,
Washer DIN 125/DIN EN ISO 7089 -A13, retain with Loctite or similar



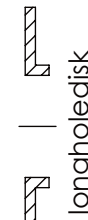
asynchronous
switching



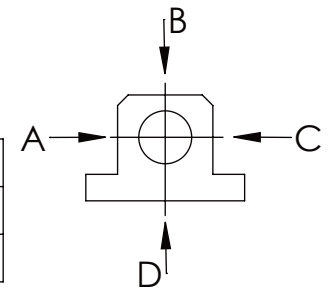
locked



unlocked



A	B	C	D
F all.	10.000 N		
under static load			



TYPE OF DOKUMENT: DATA SHEET

WEIGHT [KG]: 23.67

PROJECTION

SAFETY NOTE
DIN ISO 16016:2007-12
Buhl Maschinenbau e.K.
Carl-Zeiss-Str. 2
71065 Sindelfingen

	Date	Name
DRAW.	23.06.17	G.Velleuer
APP.	23.06.17	W.Buhl

DESIGNATION	SHEET-FORMAT
SAFETY LOCKING	DINA4
ADDITIONAL DESIGNATION	SCALE
SA 30PT	1:3
DRAWING-NO.:	REV.
05-SA 30 PT 02-03	0

GENERAL TOLERANCE DIN ISO 2768 m-K						
FROM	6	30	120	400	1000	2000
TO	6	30	120	400	1000	2000
TOL.±	0.1	0.2	0.3	0.5	0.8	1.2
	0.2	0.3	0.5	0.8	1.2	2.0

Buhl Maschinenbau e.K.
Sindelfingen

BUHL