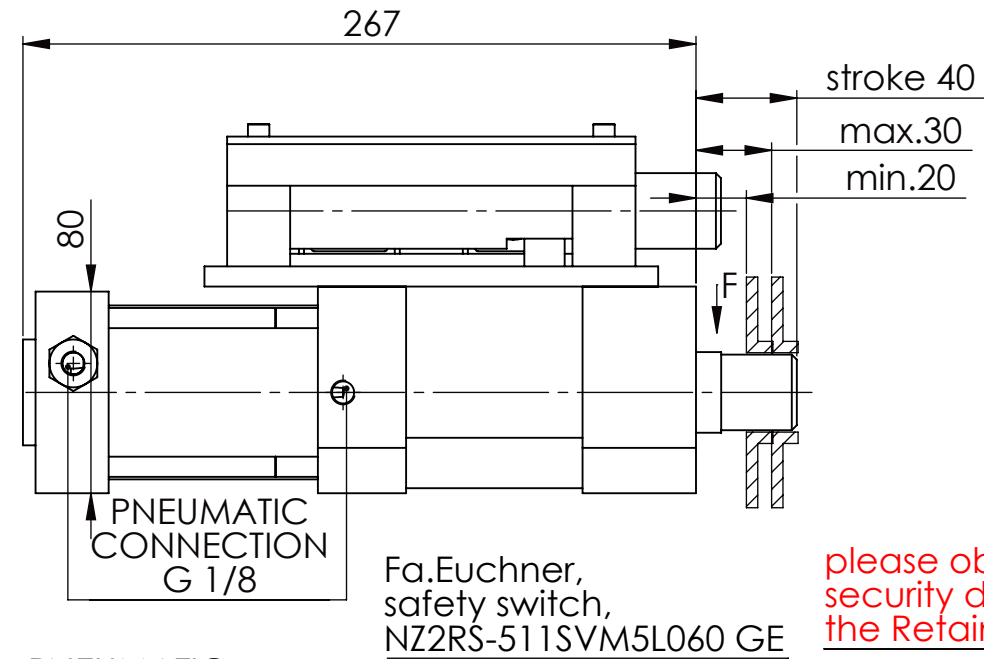
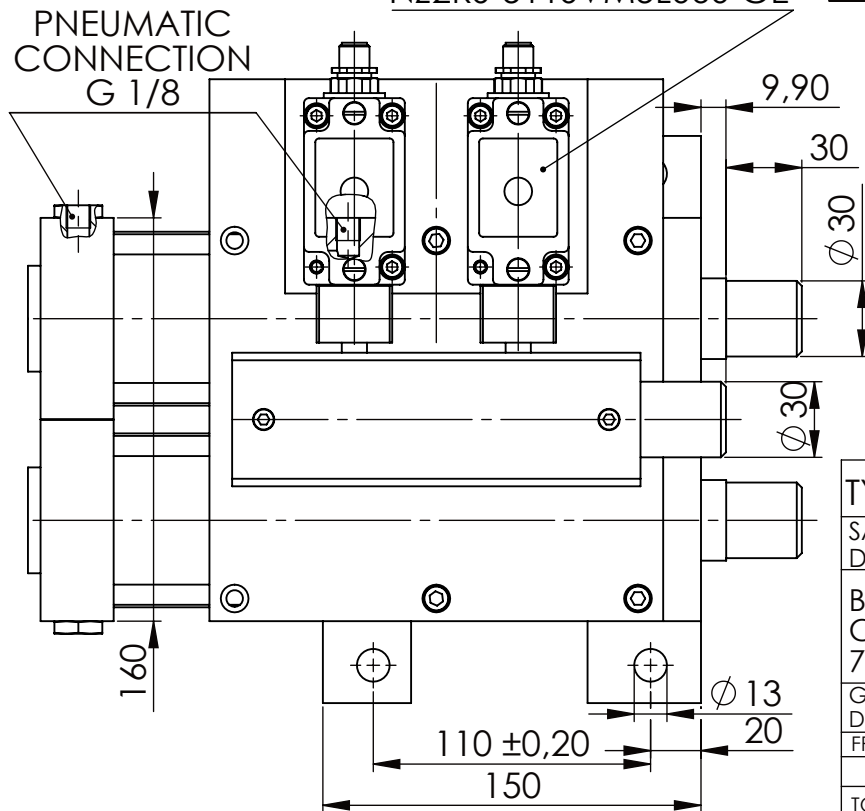
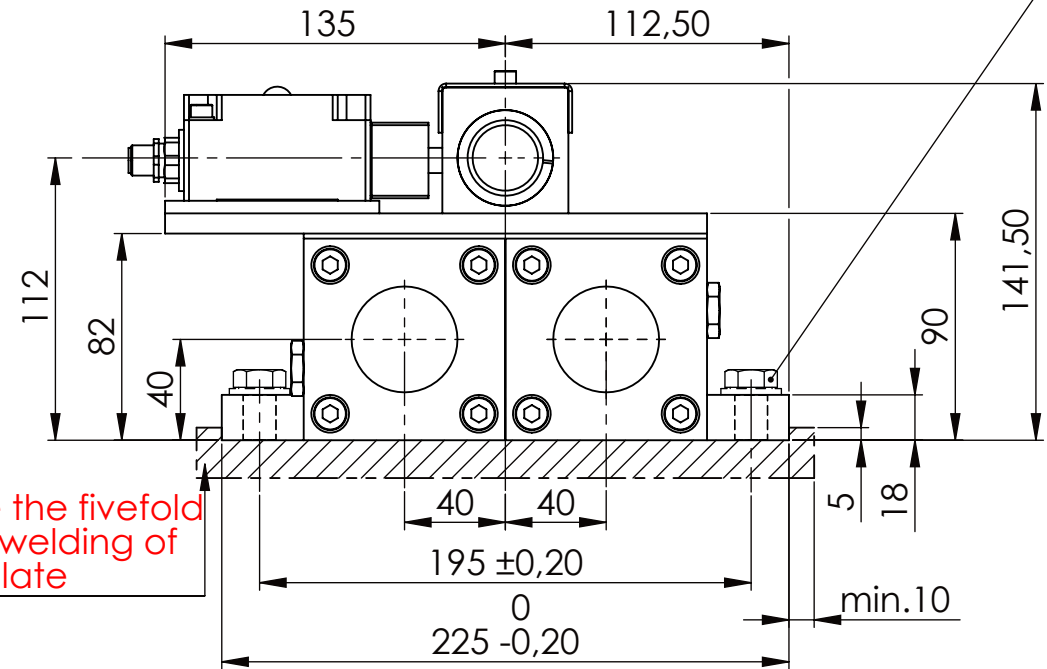


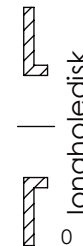
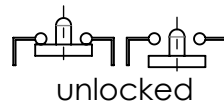
Hexagon Screw DIN 931/DIN EN ISO 4014-M12x35- 10.9, Ma=37Nm,  
Washer DIN 125/DIN EN ISO 7089 -A13, retain with Loctite or similar



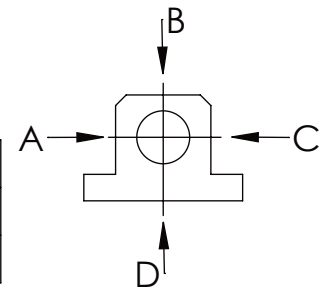
please observe the fivefold  
security during welding of  
the Retaining plate



asynchronous  
switching



A	B	C	D
F all.	10.000 N		
under static load			



TYPE OF DOKUMENT: DATA SHEET

SAFETY NOTE DIN ISO 16016:2007-12		Date	Name
Buhl Maschinenbau e.K. Carl-Zeiss-Str. 2 71065 Sindelfingen		DRAW. 23.06.17	G.Velleuer
GENERAL TOLERANCE DIN ISO 2768 m-K		APP. 23.06.17	W.Buhl
FROM	6	30	120
TO	6	30	120
TOL.±	0.1	0.2	0.3

1000	2000	4000
1000	2000	4000
1.2	2.0	

WEIGHT [KG]: 23.67	PROJECTION
DESIGNATION	SHEET-FORMAT
SAFETY LOCKING	DINA4
ADDITIONAL DESIGNATION	SCALE
SA 30PT	1:3
DRAWING-NO.:	REV.
05-SA 30 PT 01-05M12	0

**BUHL**