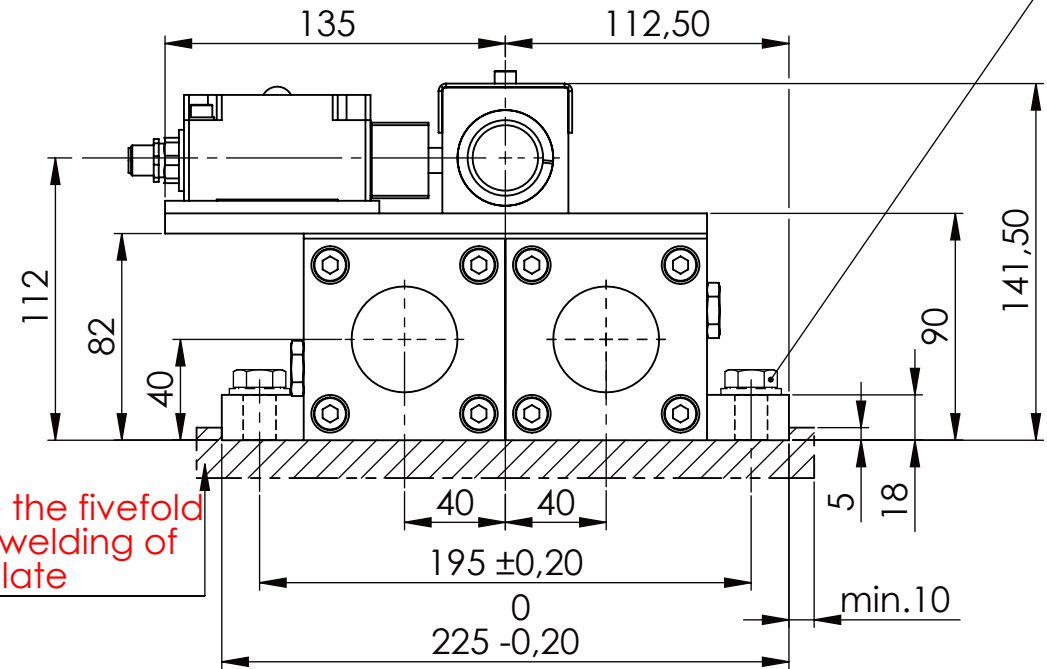
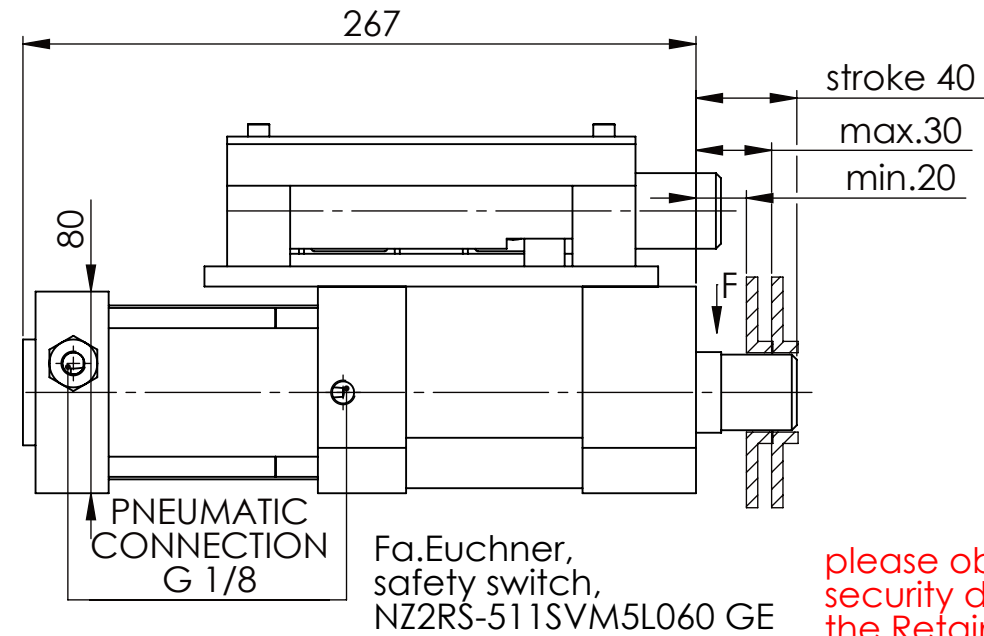
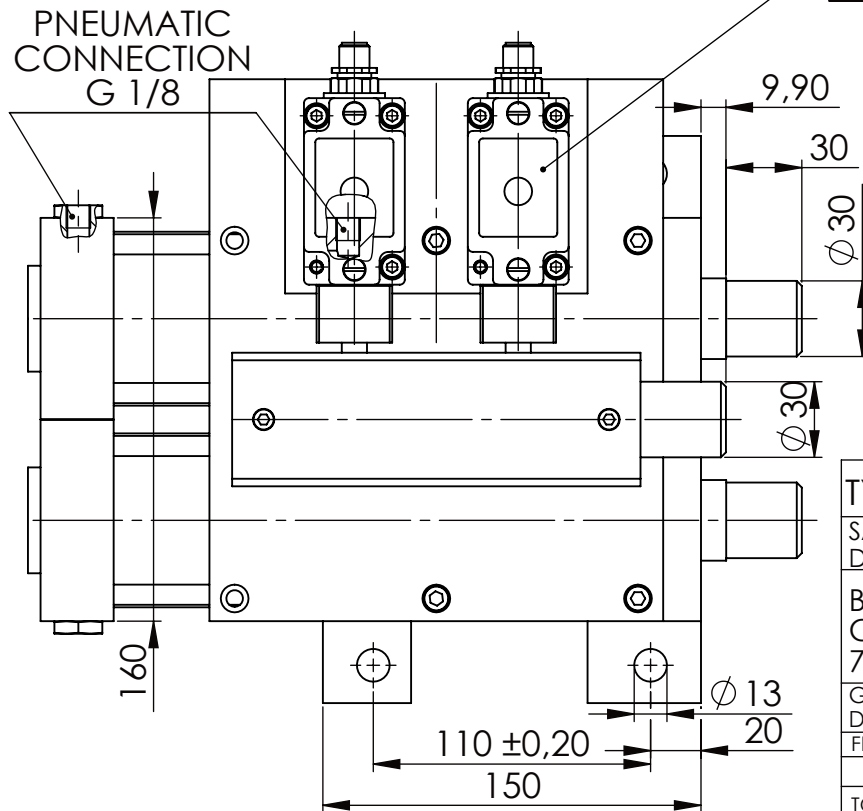


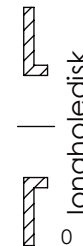
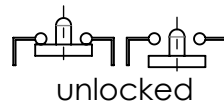
Hexagon Screw DIN 931/DIN EN ISO 4014-M12x35- 10.9, Ma=37Nm,
Washer DIN 125/DIN EN ISO 7089 -A13, retain with Loctite or similar



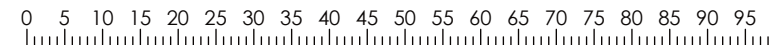
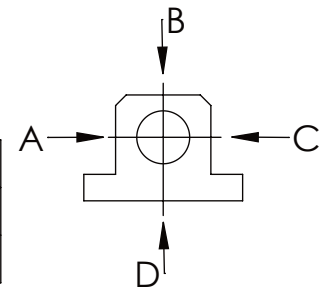
please observe the fivefold security during welding of the Retaining plate



asynchronous switching



A	B	C	D
F all. 10.000 N under static load			



TYPE OF DOKUMENT: DATA SHEET

WEIGHT [KG]: 23.67

PROJECTION

SAFETY NOTE
DIN ISO 16016:2007-12

Buhl Maschinenbau e.K.
Carl-Zeiss-Str. 2
71065 Sindelfingen

	Date	Name
DRAW.	23.06.17	G.Velleuer
APP.	23.06.17	W.Buhl

DESIGNATION

SHEET-FORMAT

SAFETY LOCKING

DINA4

ADDITIONAL DESIGNATION

SCALE

SA 30PT

1:3

DRAWING-NO.:

REV.

05-SA 30 PT 01-03M12

0

GENERAL TOLERANCE
DIN ISO 2768 m-K

FROM	6	30	120	400	1000	2000
TO	6	30	120	400	1000	2000
TOL.±	0.1	0.2	0.3	0.5	0.8	1.2

Buhl Maschinenbau e.K.
Sindelfingen

BUHL