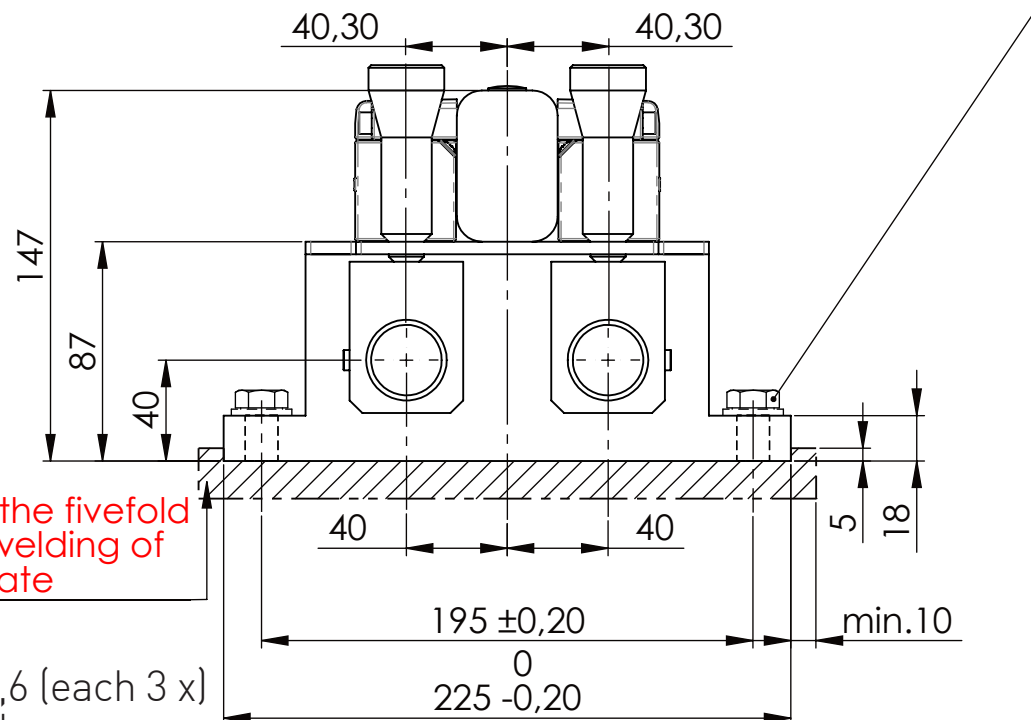
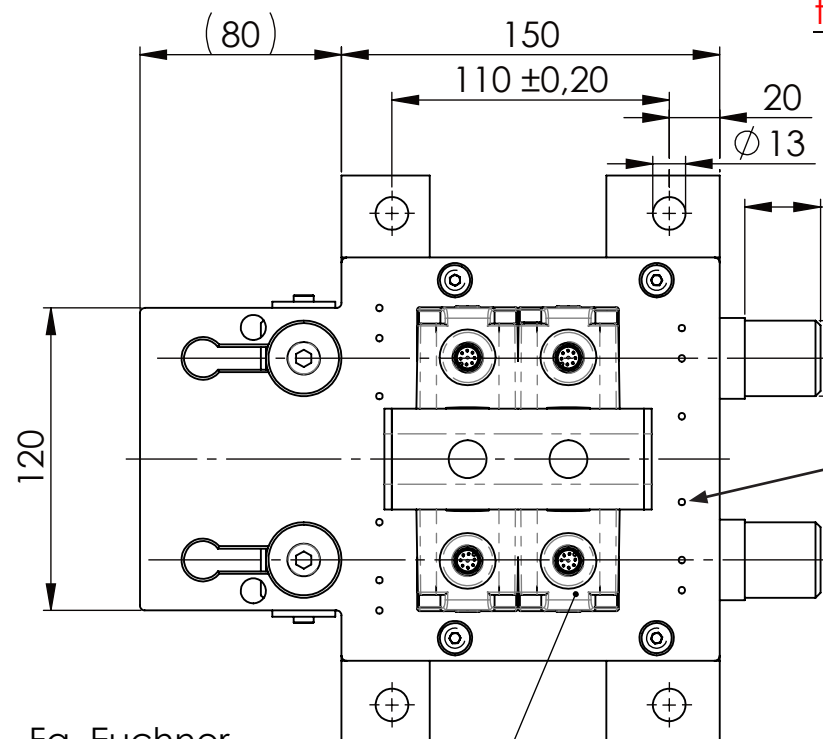


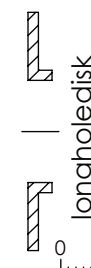
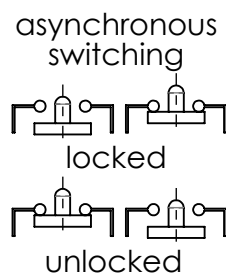
Hexagon Screw DIN 931/DIN EN ISO 4014-M12x35- 10.9, Ma=37Nm,  
Washer DIN 125/DIN EN ISO 7089 -A13, retain with Loctite or similar



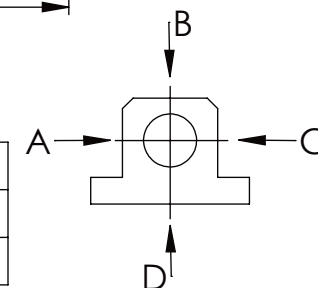
please observe the fivefold  
security during welding of  
the Retaining plate



Holes Ø 2,6 (each 3 x)  
f. data plate



A	B	C	D
F all.	10.000 N		
under static load			



Fa. Euchner,  
safety switch,  
CES-AP-C01-AH-SB-111145

TYPE OF DOKUMENT: DATA SHEET

SAFETY NOTE  
DIN ISO 16016:2007-12

Buhl Maschinenbau e.K.  
Carl-Zeiss-Str. 2  
71065 Sindelfingen

GENERAL TOLERANCE  
DIN ISO 2768 m-K

FROM	6	30	120	400	1000	2000
TO	6	30	120	400	1000	2000
TOL.±	0.1	0.2	0.3	0.5	0.8	1.2

Date	Name
06.07.23	G.Velleuer
06.07.23	W.Buhl



WEIGHT [KG]: 18.96

DESIGNATION

SAFETY LOCKING

ADDITIONAL DESIGNATION  
SA 30HT

DRAWING-NO.:

05 SA30HT 03-03 U

PROJECTION

SHEET-  
FORMAT  
DINA4

SCALE  
1:3

REV.  
1